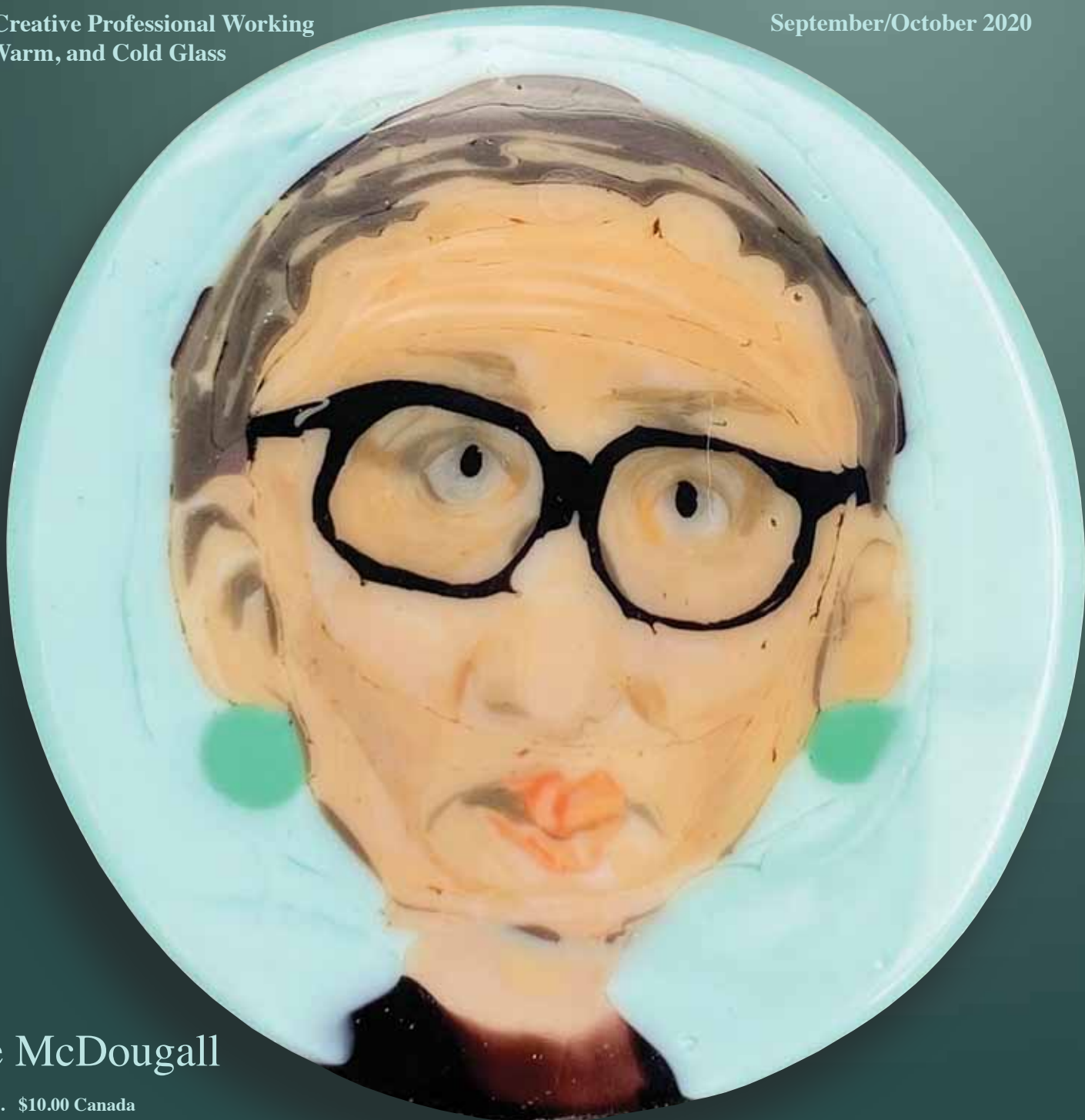


GLASS ART[®]

For the Creative Professional Working
in Hot, Warm, and Cold Glass

September/October 2020



Jodie McDougall

\$9.00 U.S. \$10.00 Canada
Volume 35 Number 5



www.GlassArtMagazine.com

2020-2021
Directory of Industry Supplies

KilnMaster

Touchscreen

Programming just got really cool!

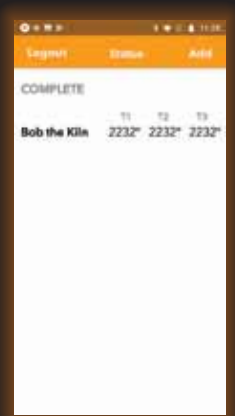


SKUTT



- Built-in Wifi and Free App
- Remote Monitoring
- Navigates like your Smartphone
- Hinged Controller for Perfect Angle
- Built-in Library of Programs

- Write and Name Your Own Programs
- Help Screens for Every Feature
- Graphing
- Logging
- Improved Diagnostics



...and so much more

skutt.com/kmt

Glass Art®

Volume 35, Number 5

Publisher ~ Maureen James

Copy Editor ~ Darlene Welch

Accounting ~ Rhonda Sewell

Circulation Manager ~ Kathy Gentry

Advertising ~ Maureen James

Graphic Artists ~ Dave Burnett

Mark Waterbury

Contributing Artists and Writers

Colleen Bryan

Sara Sally LaGrand

Vicki Schneider

Karyn Sweezy

Darlene Welch

Glass Art®

ISSN 1068-2147 is published bimonthly
by Glass Patterns Quarterly, Inc.

8300 Hidden Valley Road,

P.O. Box 69, Westport, KY 40077

POSTMASTER: Send address

changes to Glass Art®,

8300 Hidden Valley Road,

P.O. Box 69, Westport, KY 40077

Telephone: 502-222-5631

502-222-4527

Website: www.GlassArtMagazine.com

E-mail: info@GlassArtMagazine.com

Subscriptions:

One year digital subscription \$52;

One year print and digital
subscription U.S. \$52;

One year print and digital
outside U.S. subscription \$67.

One year Airmail print
and digital subscription \$136.

Single copy price (U.S.) \$9.

All subscriptions must be paid in

U.S. dollars with an international

money order or with a check

drawn on a U.S. bank.

Credit cards and PayPal

also accepted. Periodicals Postage

Paid at Westport, KY 40077

and additional mailing offices.

©2020 Glass Patterns Quarterly, Inc.

All items submitted to Glass Art® become
the sole property of Glass Art® and cannot
be reproduced without the written consent

of the publisher. Advertisers and/or agen-
cies assume all liabilities for printed
advertisements in

Glass Art®. Opinions expressed in
Glass Art® may not necessarily reflect
the opinion of the magazine,
its management, or its advertisers.

GLASS ART®

September/October 2020

Volume 35, Number 5

Pioneers in Glass Robert Carlson

4 Exploring the
Realm of Creativity
by Sara Sally LaGrand

Independent Artist Jodie McDougall

10 Miniature Images in Glass
by Vicki Schneider

The 2020–2021 Directory of Industry Supplies

Lampworked Glass Studio Profile Jared DeLong

34 Using a Crisis to Set
a New Course in Glass
by Colleen Bryan

ISGB News A Once in a Lifetime Online Auction

44 by Karyn Sweezy

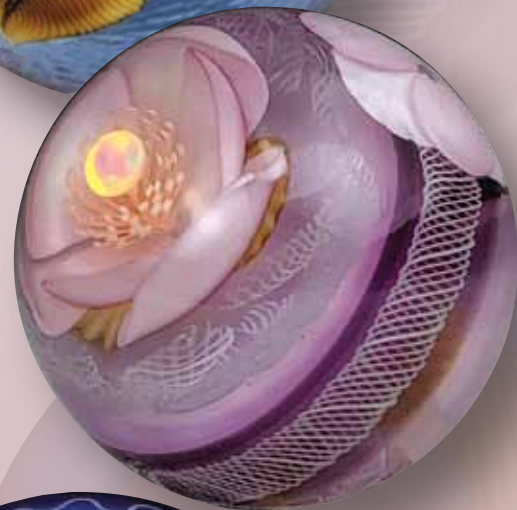
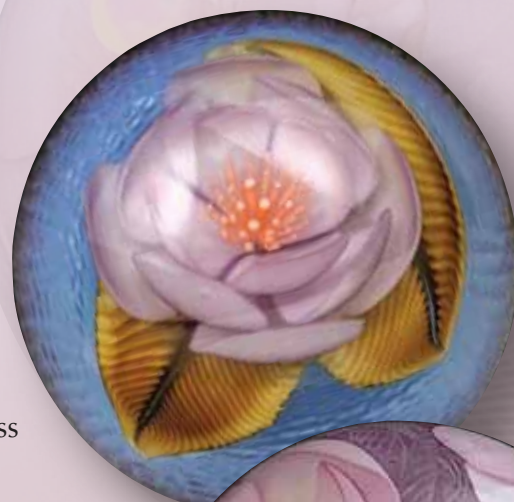
Advertisers' Index

Above:

Jared DeLong, Floral Marbles.

On the cover:

Jodie McDougall, RGB Murrine Button.



Advertising Deadlines

November/December 2020

Ad Closing	September 20, 2020
Ad Materials	September 30, 2020
Issue Mails	October 26, 2020

January/February 2021

Ad Closing	November 20, 2020
Ad Materials	November 30, 2020
Issue Mails	December 20, 2020



ROBERT CARLSON

EXPLORING THE REALM OF CREATIVITY

by Sara Sally LaGrand

Where exactly does creativity come from? That is an age-old question. Just google that phrase and feel yourself fall slowly into the rabbit hole. For some people, it's a door opening; for some, it's a punch in the solar plexus. For artist Robert Carlson, it's more like a secret spring, a wealth of information that strikes him in a moment while walking into the wing of a museum, or sometimes when walking onto the job of something completely different.

From Architecture to Glass Art

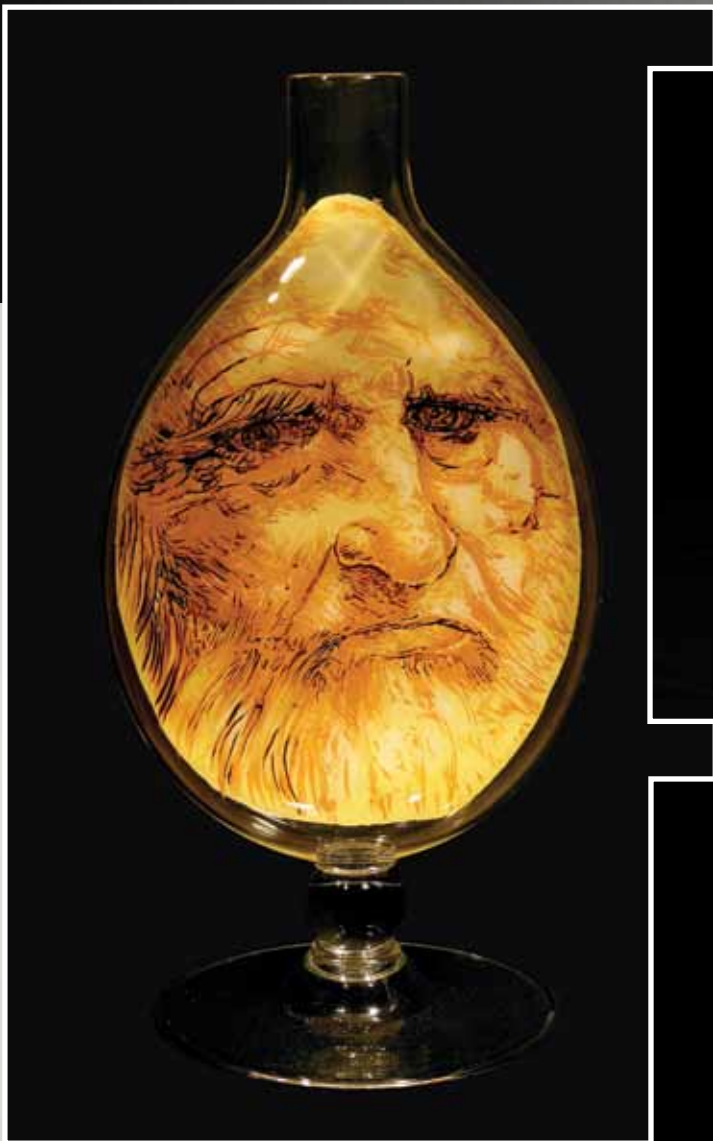
Robert Carlson met glass when he was working construction in Tucson, Arizona, in the 1970s. He was working in the area with glass artist Tom Philabaum. Carlson's specialty was in remodels and additions to local adobe style pueblo architecture, a style common to older historical structures of that area of the country.

One day, Tom invited him to his new hot shop. "It was like a tuning fork went off in my head," Carlson says, as he watched the team blowing glass. "I knew at that moment what kind of work I wanted to do. I wanted to blow glass." That light-bulb moment and much determination led to decades of blowing, not only with Philabaum but eventually with Dale Chihuly and William Morris, who often spent winters in Tucson around 1980 and 1981. Robert took classes at Pilchuck in the summer of 1981 and 1982, and in the summer of 1982, he was invited to join the staff at Pilchuck.

Eventually Carlson and Philabaum built their own hot shop in Tucson, but Carlson ultimately chose to leave and strike out on his own in 1987. "The demands of the hot shop force you into production work. In order to meet the economic demand of keeping a hot shop going, you have to make a product." That became less interesting to Carlson when a chance visit to Vancouver in 1983 had already lured him into the idea of one-off work.

The former Provincial Museum in Victoria, British Columbia, Canada, now called the Royal BC Museum and Archives, had a wing of First Nation work titled *Oceanic Art*. It caught his attention and provided the direction he needed to begin his painted work.

*Robert Carlson, The Bold Ones,
blown glass and enamel paint,
11" x 3" x 25", 2014.*



Robert Carlson, The Twelve Apostles of the Modern Mind – DaVinci, blown glass and enamel paint, 9" x 11" x 22", 2007.



Robert Carlson, The Twelve Apostles of the Modern Mind - Einstein, blown glass and enamel paint, 8" x 12" x 23", 2007.





Robert Carlson, Injustice Anywhere Is A Threat to Justice Everywhere: Michael Brown Jr., blown glass, enamel paint, and UV adhesive, 8" x 11" x 20", 2014.

Capturing History in Painted Glass

Carlson is very generous with his painting process, at least the mechanics of it. He uses sign painters' 1-Shot sign paint on clear blown objects he calls blanks. Robert settled on this process when the mechanics of firing the paint onto the glass was problematic and difficult. "There's too much chance of losing the color when you fire it on. After all, it's not really pigment, and a lot can happen in the kiln."

The artist was not satisfied with the gamble of firing. His creative process, however, is far more elusive. In a 2009 YouTube video shot by Terry Moyemont, Carlson explains how the images he paints on clear blanks created in the hot shop come to him. It's indeed elusive, even to him. Random images with bold color splotches—unintentional brushstrokes—guide the work. The rhythm and rhyme seem to be led by an unnameable source from within. Eventually, his glasswork became more focused and driven by world events that caused Carlson to change subject matter, but not abandon his developed style.

In the last decade, Carlson began a series of faces reverse-painted onto glass bottles. The series includes *The Twelve Apostles* and *Welcome to the 21st Century*. In one example, he painted the image of Michael Brown Jr., an African American man slain in Ferguson, Missouri, which prompted the "Black Lives Matter" movement in America. The image of Brown looks at you from behind the bottle. As the bottle is turned, it appears that the eyes follow you, only to find a completely different image on the back of the bottle. The other images are all driven by world events but informed by a lifetime of study. "I don't have a college degree," Carlson muses, "but I continue to study world religions and the teachings of many, from Joseph Campbell to the Dali Lama." That appears to be his jumping-off point for the imagery.

NEW!

Automatic precision straight cuts!

TAURUS 3 RING SAW

SEMI-AUTOMATIC FLOATING TRAY

Simply pull back the tray, place the item to be cut between the magnetic angles, start the saw, and it will cut perfectly without operator attention.

The tray fits all Taurus 3 Ring Saws simply and easily without modification.



The spring return assembly has an adjustable tension knob so that both delicate thin pieces and thick hard pieces can be cut perfectly every time. Cuts are beyond compare they are made automatically with perfect pressure.



Optionally available, the Semi-Automatic Floating Tray fits all Taurus 3 Ring Saws without modification.



GEMINI SAW COMPANY, INC.
310-891-0288
www.geminisaw.com

Sharing Techniques with the World

While Carlson professes to be retired from glass, he admits to having a plethora of glass blanks in storage at his home in Bainbridge Island, Washington. It comes from years of teaching gigs and residencies, where he amassed enough clear glass vessels to last a long time.

A very impressive list of the places where Robert Carlson has taught includes Pilchuck Glass School, Penland School of Craft, Haystack Mountain School of Craft, Bild-Werk Frauenau, and the Glass Furnace in Istanbul. He has also been a visiting artist at California College of Arts and Crafts, California State University at Fullerton, Kent State University, the University of Illinois, Hastings College of Nebraska, the University of Miami, and others.

Carlson's work is represented in the collections of The Corning Museum of Glass, Los Angeles County Museum of Art, Toledo Museum of Art, Tampa Museum of Art, The Glass Museum, and others. He has also received many awards that include the Lifetime Membership Award from the Glass Art Society, the John Hauberg Fellowship at the Pilchuck School, the 1990 National Endowment for the Arts Fellowship, and the 1990 Visual Arts Residency at the Centrum Foundation.



(Left to right) Robert Carlson, *The Elusive Obvious*, blown glass, enamel paint, and UV Adhesive, 33" x 9" x 12", 2004; *Naga*, blown glass and enamel paint, 14" x 16" x 15", 2001. Photo by Roger Schreiber; Ukraine, Ourkraine, Mykraine: Putin and Snowden, blown glass, enamel paint, and UV adhesive 8" x 10" x 20", 2014.

New Creative Outlets

These days Carlson is writing under the pen name J Joseph Kazden. "All creativity springs from the same well. It's mysterious. I have no clue where it comes from, but my job is to get the work to flow from that well. I'm not really retired," he says of his daily routines these days. "I am just saying I am retired, because it's easier than explaining that I am still being creative, just in a different way."

While having a working glass studio felt as if it was becoming an albatross, Carlson doesn't want to give up the idea of continuing if the muses strike him. At the same time, he doesn't want the need to produce work interfering with his creative process. He takes his Russian great-grandfather's name as his pen name for his writing career out of admiration for a man who immigrated to the United States, supporting his family and eventually teaching himself to read.

This is the kind of work that consumes Robert's days now. He maintains a full website that includes work from his decades of blowing and painting glass and generously shares his process on that site. **GA**



Robert Carlson

PO Box 11590
Bainbridge Island, Washington 98110
(206) 842-3206
bobway@robertcarlson.net
www.robertcarlson.net

*Robert Carlson in
his studio, 2014.
Photo by
Kameron Carsten.*

Sara Sally LaGrand, award-winning artist and author, has had the great fortune to study glassmaking with many gifted teachers, both in America and Italy. She holds a BA in Glass Formation from Park University, Parkville, Missouri. Honors include awards from Art Westport, State of the Arts, The Bead Museum of Washington, D.C., Fine Line Gallery, Images Art Gallery, and the Kansas City Artists Coalition.

LaGrand has taught flameworking all over the world and has work published in many books and magazines. Her art can also be found in international public and private collections. Visit www.sarasallylagrand.com to find out more about the artist.





**INTRODUCING...
THE BABY
PHOENIX!**

**QUIET SIDE
FIRE BURNER**

**40LB CAPACITY
CRUCIBLE**

**PERFECT FOR
HOME USE &
ANY SKILL
LEVEL**



MOBILE
GLASSBLOWING
STUDIOS.COM

Covington's
Wet Belt Sander




Add a plumbing
kit for just
\$69.95!

Coldwork your glass to
a professional polish
with **Covington's** line
of sanders!

Deluxe Model Pictured
Only **\$866.25!**

208.609.6636
admin@covington-engineering.com
www.covington-engineering.com

520 E. Franklin Rd.
Meridian, ID 83642

Covington







Jodie McDougall

Miniature Images in Glass



by Vicki Schneider

Jodie McDougall melts glass. It's that simple, and it's that complex. Jodie creates murrine with wonderfully detailed portraits and other images in glass. Her exquisite soft glass creations are among the best in the realm of contemporary murrine artists.

What is murrine? It's a complex cane of glass in which a design or image has been embedded. To create murrine, the artist repeatedly swipes on different colors of glass around a central axis to paint a design or picture that becomes visible when the glass cane is sliced in cross section.

Jodie explains, "I sculpt each section three-dimensionally to create different puzzle pieces that will eventually fit together to form a picture. An image can take me a week if it's really simple. The average cane takes me a couple of months, but I'm getting a lot faster now."

"I love the Zen of glass, watching it melt, the patience of it, the slow, steady, yet fast balance that you have to do. I think that's why I like soft glass so much. You have to get in the feel of that movement. I really love that dance."

Miss Bee Haven,
1" paperweight drum buttons,
March 2020.

The Process

Designing and creating a simple murrina is challenging enough for most people, but developing portrait cane nearly defies comprehension. Jodie's creative process, which can span multiple years for a single piece, starts with an image or a thought that speaks to her and percolates in her brain for a while. In formulating her vision, she searches the Internet for images she can use as references. When she's ready, she establishes her color palette. Starting with available soda lime colors from Effetre and some from Creation Is Messy, she devotes several weeks at her torch mixing and pulling glass rods in an array of shades. "I look at the Effetre palette as a painter would look at her paints. It's a base set of colors that I can hand mix and get the colors and shades that I want."

The first facial component she tackles is always her subject's eyes. "The eyes are light. When I'm doing a face or an animal, I always go into that centermost point and then work my way out." After the initial eye pull, Jodie may add specific details such as eyebrows and wrinkles, and then pull the eye cane again as many as four times to get the level of detail she's seeking.

Once she gets the eyes exactly right, Jodie will make the nose and fit the eyes and nose together. She continues by building out the cheeks and adding the lips to complete the face. She continues to build out her design around the face and finishes her image by adding defining details like the character's hat, clothing, environment, and even jewelry.



(Left to right) Chickadee murrina slice, 1.5" x 2" in ISGB Presidents collection at the Corning Museum; The Queen, 1" pendant. Photo by Vicki Schneider; Midnight Barn Owl, 1" pendant in silver. 2019.

The completed image starts out being 3.5 to 4 inches in diameter and 2 inches in length. Jodie will eventually pull that heavy mass into thinner canes by heating and rotating the glass in her torch until it is soft enough to stretch to her desired diameter. Her first pull will typically result in a cane that is half the diameter of her source and twice as long. She will then reheat sections and pull them into increasingly smaller diameters.

Achieving compositional balance is essential in her work—the balance between too little and too much detail. “If I put in too much information, when I pull the image to different sizes, it will be muddy, and you won’t be able to tell what it is. If I don’t put in enough information, it will look cartoony, and that’s not really appealing to me.”

Before McDougall can sell her intricate murrine, she cuts the canes with a lapidary saw into slices known as “coins” and polishes them with a flat lap grinder. She uses different finishing processes depending on the intended use of the slice, which may be a collectible coin, button, cabochon, or bead.

Having a variety of pulled sizes allows Jodie to create different price points that appeal to a range of buyers from the high-end gallery market to the home knitter. Jodie particularly enjoys creating and selling buttons made from her murrine. She sells a lot of her buttons at fiber festivals, where she enjoys seeing her miniature pictures in glass sewn on articles of clothing.



Inspirational Faces

Prior to her fascination with glass faces, Jodie thought face canes were “creepy” until she learned to make them in a class. “It was a painful process, but it was really good for me at the same time.” Developing that skill led to her current body of work—portraits of inspirational women. “I really want to push the female image in portrait type canes that honor all women in all walks of life. Instead of screaming at what I don’t like, I want to build up what I do like.

“When I work on an image, it tends to come from this place inside me. It takes me on a journey that translates into the work eventually, whether I realize it in the beginning or not. I can’t remember which piece it was, but it was the first piece that started talking to me. It kept saying, ‘I want to be this. I want to do this.’”

Rather than adamantly sticking to her plan, Jodie started listening to the work and let the piece take her on a journey of what it wanted to be. “I know that sounds really strange, but how I feel and what’s going on with me really does translate into my work. When you’re working on something, you really have to listen to yourself and listen to that muse. You can’t have any expectations, because the world can be turned upside down in any given moment. I think a distinguishing theme to my work is that it reflects my inner world.”

Focusing on the current political climate, Jodie was moved to create a likeness of Supreme Court Justice Ruth Bader Ginsberg. “Ruth really inspires me because of her determination and how hard she’s fought for women. She’s a brilliant and amazing woman—that strong voice that we need that says, ‘No! You can be strong, and you can be smart, and you can be persistent, and you can have an impact.’ She is such a voice for women that I wanted to have her everywhere.”

(Clockwise from top left) RBG Dissent V1, 30 mm pendent in silver, February 2020; Ruth Eyes component cane, 1/2" x 2"; Ruth Glasses component cane, 3/4" x 2"; Ruth Face component cane, 1.5" x 1.25" x 3"; Ruth Eyes, Nose, Lips component cane; Ruth V2 component canes 2.5" x 1" x 2".

Spurred on by the current fight with science that is taking place in the United States, McDougall recently began working on Madame Curie. As soon as Jodie started thinking about Curie, her books, images, and concepts appeared in McDougall's life. Apropos to Curie's life work, Jodie has begun experimenting with glow-in-the-dark glass. Her hope is to make the area behind Curie glow. "I'm worried the background will probably crack, but we'll see. Even if it is cracked, I can still work with it in different ways."




(Clockwise from top) Fortune Teller Eyes, Nose, approx. 1"; Fortune Teller Face, approx 1.25" x 2"; Fortune Teller collectors slice, 1.75"x 1.25" x 4 mm, 2020; Fortune Teller components, 2019.

McDougall recently finished *The Fortune Teller*, the piece she is proudest of to date. Jodie was inspired to create this evocative cane after seeing a fortune-telling machine at the Winchester Mystery House in San Jose, California. The image in the machine looked just like her grandmother, and Jodie told herself that one day she had to make her in glass. It took three to four years before McDougall even started *The Fortune Teller*, and then it took a year and a half to finish. "She's been on a mental journey with me for a very, very long time. Watching her actually look back at me really makes me happy."


Even though Jodie has sold finished pieces featuring the fortune teller, the old woman and McDougall continue on a journey together. Jodie envisions adding different layers to the image using reverse enamel to create more complicated scenes. "I want to put her in a vintage Airstream trailer, so she's going to get pulled even smaller. Then I'm going to continue on my journey with women who inspire me like Betty White and Michelle Obama."

DENVER GLASS MACHINERY


COLD



WARM



HOT



Supplying artists with quality tools to produce quality work since 1978

2800 S. Shoshone St. Englewood, CO 80110 / Ph. 303 781-0980, Fax. 303 781-9067

Web: denverglass.com Email: info@denverglass.com

Achieving Success and Balance

In looking back on her life so far, Jodie wouldn't change a thing. She's happily lived her life by following her gut and her heart. After over 20 years as a massage therapist, she decided to work at glass full time. Jodie knew that if she wanted to get good at murrine, she had to dedicate her life to it. "My heart said, 'Go forth and conquer,' and I did it. Art is part of who I am. It's my life beyond what I do. I feel I am successful because I have a simple, full life. Am I making a million dollars? No, but I am able to navigate through this world, so I guess I am successful. I have a simple, getting balanced life."

Jodie recounts that eight years ago when she told her husband that she wanted to close her massage practice to go into glass, "He said, 'Life's short. If you want to do this, go do it.' And it's been wonderful." McDougall is fortunate that her family is behind her and her decisions 100 percent. "They've been my cheerleaders. I don't think about what I would change in my life, because I like the journey I've been on."

Advice to New Lampworkers

Jodie has achieved a level of excellence, because she's never let the difficult or perceived impossible hold her back. She would advise new lampworkers to learn their craft. "You have to learn your skills, and you have to practice them. Then you need to know when to throw all your skills out the window because they're not taking you where you want to go. Make what you want. Don't let anybody tell you that you can't make something because you don't have all the hours in or it's too hard. Just jump in, do what you want, and play with it. Don't be afraid of any of it."

Even though others may disagree, Jodie doesn't consider herself a master. "I don't know when you can ever claim that title, because when you master something, you're kind of done. I like to think that I will never master it so that I'm never done."

Jodie is continually striving to achieve and maintain a good balance between her art and the rest of her life. She is a driven person, often pushing herself to work harder, longer, and faster. "I tend to move heaven and earth to do what I want." Her biggest challenge is not the development of higher-level skills. She's pleased with the technical prowess she has achieved. Jodie's biggest challenge is stepping away from her torch. Let's hope she doesn't do that too often. **GA**



Jodie McDougall
Jodie McDougall Studios
jodiemcdougallstudios.com
glasswhimz@yahoo.com
etsy.com/shop/mcdougallstudios
Instagram @Jodiemcdougallstudio

Vicki Schneider follows the tradition of Venetian flameworking artists to produce decorative solid and blown glass art. Mainly working off-hand in COE 104 soft glass, she is inspired by her childhood spent on the Jersey shore. Her current bodies of work include Mama's Garden, composed of lifelike blown and solid flowers, and Childhood, vignettes celebrating the innocence of youth.

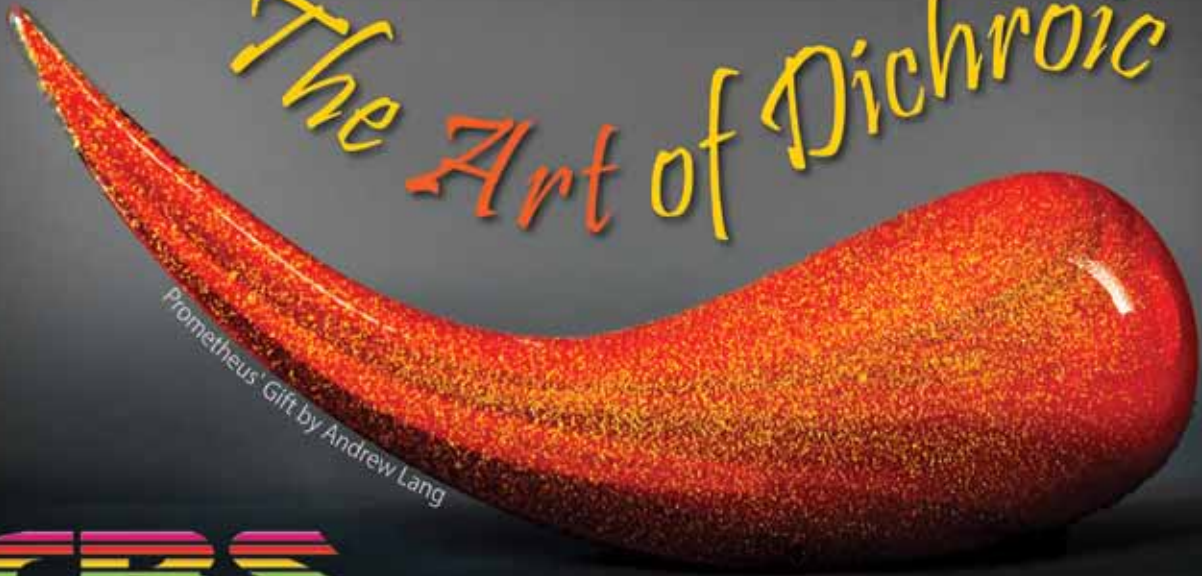
In 2009, Schneider opened Expressive Glass, her teaching studio in Buffalo, New York, to share her passion for glass with novice and skilled glassworkers. Since 2006, the artist has introduced more than 500 students to the magic of glass art and has studied with and hosted many of the world's most respected artists. Learn more about Vicki's work and her studio at www.expressiveglass.com.



(Left to right) Sandpiper Necklace, 1.5" bead with 20" 4 mm torchworked beaded strand, 2018; Foxy, 2" paperweight, 2018.

© Copyright 2020 by Glass Art®. All rights reserved.

The Art of Dichroic



Prometheus' Gift by Andrew Lang



COATINGS BY SANDBERG, INC.
MANUFACTURER OF DICHROIC GLASS

714-538-0888 | www.cbs-dichroic.com

New Bullseye Glass Styles

LAVENDER

000304

PEACOCK BLUE

001176

 BULLSEYE
GLASS CO.



Dan Friday

Photo by Alec Miller

How to Use The 2020–2021 DIRECTORY of INDUSTRY SUPPLIES

Keep this Directory handy! Our 2020–2021 DIRECTORY OF INDUSTRY SUPPLIES is dedicated to making the buying and selling process between artists/retailers and suppliers mutually beneficial by providing glass artists with new sources of supplies and suppliers with new prospects and customers. We urge you to consider this your source for virtually everything you need to operate your business. The companies listed in the Directory are in business to serve you. Give them an opportunity to prove how good they are.

The 2020–2021 DIRECTORY OF INDUSTRY SUPPLIES consists of two sections:

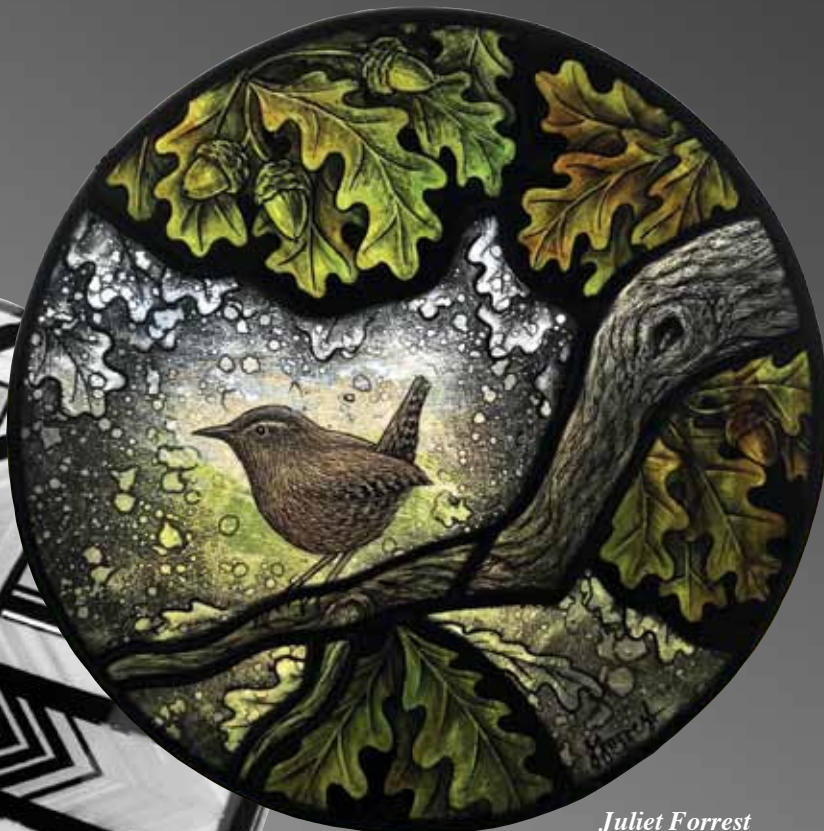
COMPANY LISTINGS..... 25

These comprehensive alphabetical listings provide address, phone number, toll-free (800) number, fax number, Web address, e-mail, contact person, products or services available, product trade names, and brief comments for each glass art supplier. Some suppliers chose not to have all the information printed. Each listing includes all of the pertinent data submitted by the supplier.

PRODUCTS AND SERVICES..... 28

The products and services are listed alphabetically by state. For example, if you live in California and would like to purchase pliers, simply find the category titled "Pliers" and look for California suppliers who carry them. Some categories are divided into sub-headings, so you can quickly and accurately pinpoint the listing you need. Refer to the company listings section for detailed information on each supplier.

Ian Chadwick



Juliet Forrest

COMPANY LISTINGS

AAE Glass LLC

1490 NE Pine Island Rd, Building 10
Cape Coral, FL 33909
239-471-7724

WEB: www.aaeglass.com

EMAIL: info@aaeglass.com

CONTACT: Customer Service

PRODUCTS OR SERVICES:

Tanya Veit-inspired online education - Bullseye Glass Products - Unique Glass Fusing Products available only at AAE Glass.

BRIEF ADDITIONAL

COMMENTS:

The AAE Glass Education Center is the place all fused glass artists go to learn new techniques and grow their businesses.

PRODUCT TRADE NAMES:

Bullseye Glass - AAE Glass Education Center - Tanya Veit Online Education.

Aanraku Glass Studios

41 S Railroad Ave
San Mateo, CA 94401-3209
650-372-0527

FAX NUMBER: 650-372-0566

WEB: www.abasg.com

EMAIL: aanraku@abasg.com

CONTACT: Jeffrey Castaline

PRODUCTS OR SERVICES:

Pattern books, grinder bits, pattern shears, jewelry bails, belt buckle blanks, lead and glass stop blocks, glass grippers, foil burnishers, bottle stoppers for beads and fused glass, wall-mounting devices, pendant plates, and pattern design services.

BRIEF ADDITIONAL

COMMENTS:

Teaching studio for stained glass, fused glass, and lampworking. Full-service repair and restoration studio, full-service retail studio.

PRODUCT TRADE NAMES:

Aanraku Stained Glass, Twofers, Thinline, Tracker, Nick's Grinder Mate.

American Glass Supply Company

2442 Ludelle St
Fort Worth, TX 76105
817-535-2651
866-535-2651

FAX NUMBER: 817-536-7120

WEB: www.AmericanGlassSupply.com

EMAIL: info@americanglasssupply.com

CONTACT: Connie Speer

PRODUCTS OR SERVICES:

Glass equipment and supplies, kilns, tools, sheet glass, molds, kits, and packages.

BRIEF ADDITIONAL

COMMENTS:

Glass fusing classes and workshops. Consulting programs.

American Hakko Products Inc

28920 Ave Williams
Valencia, CA 91355
661-219-0249

800-884-2556

FAX NUMBER: 661-294-0096

WEB: www.hakkostainedglass.com

EMAIL: jeni.hinton@hakkousa.com

CONTACT: Jeni Hinton

PRODUCTS OR SERVICES:

Soldering irons, tip cleaners, fume extraction, tips, heat resistant soldering mats, iron holders.

PRODUCT TRADE NAMES:

FX-601 Soldering Iron.

Angel Gilding

1945 Gardner Road
Broadview, IL 60155
708-383-3340
866-341-3340

FAX NUMBER: 708-383-9059

WEB: www.angelgilding.com

EMAIL: cust.service@angelgilding.com

CONTACT: Alexandra Gomez

PRODUCTS OR SERVICES:

All tools, supplies, and chemicals needed to make and modify mirrors on multiple surfaces. We offer complete kits as well as individual items and can ship around the world.

BRIEF ADDITIONAL

COMMENTS:

At Angel Gilding we strive to make the art of mirror creation and modification accessible and understandable. We provide videos and complete, illustrated instructions to review anytime on our website along with technical support via phone and email. Classroom instruction can be arranged also.

Bullseye Glass Resource Center Bay Area

4514 Hollis Street
Emeryville, CA 94608

510-595-1318

WEB: www.bullseyeglass.com

EMAIL: bayarea@bullseyeglass.com

CONTACT: Bryce Gaspard, Manager

PRODUCTS OR SERVICES:

The Bay Area's premiere kiln-glass center and art gallery offers creative classes for all levels taught in a supportive, inspirational environment including curated art exhibitions. Find the tools, supplies, and instruction you need for kilnforming. Full line of Bullseye Compatible glasses, including billets, frits, rods, stringers, and confetti. Volume discounts.

BRIEF ADDITIONAL

COMMENTS:

Students are eligible for Open Studio.

PRODUCT TRADE NAMES:

Tekta, Bullseye Compatible glass, Bullseye Shelf Primer, Bullseye ThinFire paper, Chopstix sheet glass, Disco Pack, Hot Rods Starter Pack, Class Pack, Painting with Glass Pack, Studio Fuser Pack, GlasTac fusing adhesive.

Bullseye Glass Resource Center Los Angeles

143 Pasadena Avenue, Suite B
South Pasadena, CA 91030
323-679-4263

WEB: www.bullseyeglass.com

EMAIL: losangeles@bullseyeglass.com

CONTACT: Carla Morales, Manager

PRODUCTS OR SERVICES:

Los Angeles' premiere kiln-glass center offers creative classes for all levels taught in a supportive, inspirational environment. Find the tools, supplies, and instruction you need for kilnforming. Full line of Bullseye Compatible glasses, including billets, frits, rods, stringers, and confetti. Volume discounts.

BRIEF ADDITIONAL

COMMENTS:

Students are eligible for Open Studio.

PRODUCT TRADE NAMES:

Tekta, Bullseye Compatible glass, Bullseye Shelf Primer, Bullseye ThinFire paper, Chopstix sheet glass, Disco Pack, Hot Rods Starter Pack, Class Pack, Painting with Glass Pack, Studio Fuser

Pack, GlasTac fusing adhesive,
Color Line Paints.

**Bullseye Glass
Resource Center
New York**

115 Hoyt Avenue

Mamaroneck, NY 10543

914-835-3794

WEB: www.bullseyeglass.com

EMAIL: newyork@bullseyeglass.com

CONTACT: Michele Godfredson, Manager

PRODUCTS OR SERVICES:

Westchester's premiere kiln-glass center and art gallery offers creative classes for all levels taught in a supportive, inspirational environment that includes curated art exhibitions.

Find all the tools, supplies, and instruction you need for kilnforming with the full line of Bullseye Compatible colored glass, including sheets, billets, frits, rods, stringers, and confetti. Volume discounts.

**BRIEF ADDITIONAL
COMMENTS:**

Our gallery exhibits artwork exploring the potential and complexity of kilnformed glass. Students are eligible for Open Studio.

PRODUCT TRADE NAMES:

Tekta, Bullseye Compatible glass, Bullseye Shelf Primer, Bullseye ThinFire paper, Chopstix sheet glass, Disco Pack, Hot Rods Starter Pack, Class Pack, Painting with Glass Pack, Studio Fuser Pack, GlasTac fusing adhesive.

**Bullseye Glass
Resource Center
Portland**

3722 SE 21st Ave

Portland, OR 97202

503-232-8887

FAX NUMBER: 503-238-9963

WEB: www.bullseyeglass.com

EMAIL: sales@bullseyeglass.com

PRODUCTS OR SERVICES:

Portland's premiere kiln-glass center offers creative classes for all levels taught in a supportive, inspirational environment. Find the tools, supplies, inspiration, and instruction you need for kilnforming and stained glass. Connected to the Bullseye Glass Co. factory, you can access the

full line of Bullseye compatible glasses, including sheets, billets, rods, frits, and stringers. Volume discounts. Artist residencies. Architectural glass fabrication services and custom cutting. Our online store ships nationally.

**BRIEF ADDITIONAL
COMMENTS:**

Students are eligible for Open Studio.

PRODUCT TRADE NAMES:

Tekta, Bullseye Compatible glass, Bullseye Shelf Primer, Bullseye ThinFire paper, Chopstix sheet glass, Disco Pack, Hot Rods Starter Pack, Class Pack, Painting with Glass Pack, Studio Fuser Pack, GlasTac fusing adhesive.

**Bullseye Glass
Resource Center
Santa Fe**

805 Early Street, Bldg E

Santa Fe, NM 87505

505-467-8951

WEB: www.bullseyeglass.com

EMAIL: santafe@bullseyeglass.com

CONTACT: Morgan Dougherty, Manager

PRODUCTS OR SERVICES:

The Southwest's premiere kiln-glass center offers creative glass classes and workshop vacation packages for all levels taught in a supportive, inspirational environment. Find the tools, supplies, and instruction you need for kilnforming. Access the full line of Bullseye Compatible glasses, including sheet, rods, billets, frits, stringers, and confetti. Volume discounts.

**BRIEF ADDITIONAL
COMMENTS:**

Students are eligible for Open Studio.

PRODUCT TRADE NAMES:

Tekta, Bullseye Compatible glass, Bullseye Shelf Primer, Bullseye ThinFire paper, Chopstix sheet glass, Disco Pack, Hot Rods Starter Pack, Class Pack, Painting with Glass Pack, Studio Fuser Pack, GlasTac fusing adhesive.

**Canadian Stained Glass
Warehouse**

260 3rd Ave

Quebec, QC G1L 2X3 Canada

418-648-0969

877-918-0969

FAX NUMBER: 418-648-6100

WEB: www.canadianstainedglasswarehouse.com

EMAIL: jocelyne@artisandsduvitrail.com

CONTACT: Jocelyne Vezina

PRODUCTS OR SERVICES:

Stained glass supplies.

BRIEF ADDITIONAL

COMMENTS:

Everything for stained glass and glass fusing.

Cascade Lead Products

1614 W 75 Ave

Vancouver, BC V6P 6G2 Canada

604-261-8884

877-298-8884

FAX NUMBER: 604-261-8464

WEB: www.cascademetals.com

EMAIL: info@cascademetals.com

CONTACT: Michael Turvey

PRODUCTS OR SERVICES:

Came: lead, zinc, brass, and copper. Solder. Steel and zinc rebar. Came benders, re-strip, notching tools, lead-cutting knives.

PRODUCT TRADE NAMES:

Cascade Metals, Stillemans, Chicago, Prairie House.

Coatings By Sandberg Inc

856 N Commerce St

Orange, CA 92867

714-538-0888

FAX NUMBER: 714-538-2767

WEB: www.cbs-dichroic.com

EMAIL: info@cbs-dichroic.com

CONTACT: Dana S. Baldwin

PRODUCTS OR SERVICES:

Leading manufacturer of dichroic coated glass. 19- or 24-inch rounds, starter packs, patterns, and custom coatings. 90 COE, 96 COE, Moretti, borosilicate, float, or your glass. Sculpture, tubes, crystals, rods, stringers, bevels, bowls, castings, prisms, beads, buttons, and more. Exclusive to Coatings By Sandberg: Dichroic coated ceramic tiles, Dichroic Extract, Glow Pigment and Glow Decals, Dichroic-Coated Copper Foil, Dichroic Firestrips.

BRIEF ADDITIONAL

COMMENTS:

Technical assistance always available for your questions regarding dichroic or your personal project.

PRODUCT TRADE NAMES:

Coatings By Sandberg, CBS.

Covington Engineering Corp

520 E Franklin Rd, PO Box 35

Meridian, ID 83642

909-793-6636

877-793-6636

FAX NUMBER: 909-793-7641

WEB: www.covington-engineering.com

EMAIL: sales@covington-engineering.com

CONTACT: Ashlee Emoto

PRODUCTS OR SERVICES:

Glass tools and machines for beginners and professionals alike.

BRIEF ADDITIONAL

COMMENTS:

We have coldworking tools for any size studio.

PRODUCT TRADE NAMES:

Covington, Covington

Engineering, Rociprolap®.

Cress Mfg. Company Inc

4736 Convoir Dr

Carson City, NV 89706

775-884-2777

800-423-4584

FAX NUMBER: 775-884-2991

WEB: www.cressmfg.com

EMAIL: info@cressmfg.com

CONTACT: Arturo Maldonado

PRODUCTS OR SERVICES:

Electric Kilns.

PRODUCT TRADE NAMES:

Cress Kilns.

D&L Art Glass Supply

1440 W 52nd Ave

Denver, CO 80221

303-449-8737

800-525-0940

FAX NUMBER: 303-442-3429

WEB: www.dlartglass.com

EMAIL: info@dlartglass.com

CONTACT: Scott Childress

PRODUCTS OR SERVICES:

D&L Art Glass Supply is a full-line art glass distributor serving the professional retailer, glass crafter, studio artist, manufacturer, and borosilicate lampworker for over 45 years. D&L Art Glass Supply stocks everything you need for traditional stained glass, fusing, lampworking, beadmaking, jewelry, glass painting, mosaics, and much more. Our 42,000-square-foot warehouse is fully stocked with thousands of sheets of glass from more than 20 manufacturers and

everything you need in tools and supplies. Visit www.dlartglass.com and shop today!

**BRIEF ADDITIONAL
COMMENTS:**

As the largest wholesale art glass distributor in the West, D&L Art Glass Supply has been providing "Quality Service from People Who Care" for over 45 years. Our customer-focused sales staff is dedicated to meeting the needs of your business. D&L specializes in domestic & international shipping. Visit D&L and handpick your glass or take a class in our state-of-the-art classroom. Our warehouse is open to the public.

PRODUCT TRADE NAMES:

Armstrong, Bullseye, Cascade, Choice™ hand tools, Choice™ bevels, Choice™ bevel clusters, Choice™ glue chip glass, Choice™ solder, CBS Dichroic, Colour de Verre, Evenheat, Fremont, Gemini, Glastar, Gryphon, Hakko, Kokomo, Northstar, Paragon, Simax, Skutt, Spectrum, System 96®, Toyo, Uroboros, Weller, Canfield, Covington, Creative Paradise, Bohle, Saint-Gobain, Oceanside, Schott.

Denver Glass Machinery Inc

2800 S Shoshone St
Englewood, CO 80110
303-781-0980

FAX NUMBER: 303-781-9067

WEB: www.denverglass.com

EMAIL: info@denverglass.com

CONTACT: Holly Morrison

PRODUCTS OR SERVICES:

Manufacturer of kilns, beveling equipment, engravers, glass band saws, grinders, glassblowing furnaces, annealers, glory holes, and custom machinery.

**BRIEF ADDITIONAL
COMMENTS:**

Machinery built for the professional glass art studio.

PRODUCT TRADE NAMES:

DGM / Denver Glass Machines.

Ed Hoy's International

27625 Diehl Rd
Warrenville, IL 60555
630-836-1353
800-323-5668

WEB: www.edhoy.com

EMAIL: info@edhoy.com

CONTACT: Steven DuCharme

PRODUCTS OR SERVICES:

Art Glass & Supplies

Edco Supply

323 36th Street
Brooklyn, NY 11232
718-788-8108

FAX NUMBER: 718-788-0839

WEB: www.edcosupply.com

EMAIL: arlene@edcosupply.com

CONTACT: Arlene Amuso

PRODUCTS OR SERVICES:

Copper Foil.

Franciscan Glass Co

35255 Fircrest St
Newark, CA 94560
510-505-9775
800-229-7728

FAX NUMBER: 800-229-7730

WEB: www.franciscanglass.com

EMAIL: sales@franciscanglass.com

CONTACT: Phil Bibb

PRODUCTS OR SERVICES:

Franciscan Glass Co, Inc. is a full-line distributor of stained glass and related tools and supplies for traditional stained glass as well as fused and hot glass. We have a wide selection of architectural glass for cabinets and sidelights that can be fabricated to cut sizes with the capability to temper or laminate for safety glazing. We have been family owned and operated since 1963. Our staff is very knowledgeable and helpful, ready to answer all of your questions. We ship via UPS and common carrier daily and get most orders out within 24 hours. Export orders welcome.

**BRIEF ADDITIONAL
COMMENTS:**

Great customer service is our goal. We hand select all glass as if it were for our own work. All orders are packed with care and pride to be sure you receive your goods intact.

PRODUCT TRADE NAMES:

Bullseye, Youghioghenny, Kokomo, GNA, Pilkington, Glastar, Morton, Gryphon, Gemini, Toyo, Fletcher, Weller, Leponitt, Fan Out, American Hakko, Odyssey, Clarity, Cascade Metals, Amerway, Evenheat Kilns,

Skutt Kilns, Coatings By Sandberg, DichroMagic®, Oceanside Glass Tile, Wissmach 96™, Oceana, Venture Tape.

**Franklin Art Glass
Studios Inc**

222 E Sycamore St
Columbus, OH 43206
614-221-2972
800-848-7683

FAX NUMBER: 614-221-5223

WEB: www.franklinartglass.com

EMAIL: info@franklinartglass.com

CONTACT: Gary L. Helf

PRODUCTS OR SERVICES:

Franklin Art Glass is a full-line wholesale distributor and retailer that has been family owned and operated for over 90 years. Franklin carries everything for traditional stained glass, fusing, jewelry, painting, and more. See our website for more details.

**BRIEF ADDITIONAL
COMMENTS:**

Our knowledgeable staff is ready to answer all of your questions. Easy phone and online ordering are available. We ship UPS and USPS, and most orders are processed within 24 hours. Export orders available.

PRODUCT TRADE NAMES:

Wissmach, Kokomo, Spectrum, Youghioghenny, Bullseye, Lamberts, GNA, Inland, Morton, Clarity, Odyssey, Worden, Cascade, Avril, Weller, Fletcher, Gryphon, Gemini, Toyo, and more!

Fusion Headquarters Inc

15500 NE Kincaid Rd
Newberg, OR 97132
503-538-5281

FAX NUMBER: 503-538-6527

WEB: www.fusionheadquarters.com

EMAIL: office@fusionheadquarters.com

CONTACT: Gil Reynolds

PRODUCTS OR SERVICES:

Glass Fusing supplies, equipment, and classes.

PRODUCT TRADE NAMES:

Fuse Master Products.

Gaffer Glass USA Ltd

19622 70th Ave South Bay #4
Kent, WA 98032
253-395-3361
877-395-7600

FAX NUMBER: 253-395-3363

WEB: www.gafferglassusa.com

EMAIL: info@gafferglassusa.com

CONTACT: Jessica Hall

PRODUCTS OR SERVICES:

Blowing, Casting, Frit Mixes, Red Hot Metal Tools, Maruko Tools.

Gemini Saw Company, Inc

3300 Kashiwa Street
Torrance, CA 90505
310-891-0288

FAX NUMBER: 310-891-0265

WEB: www.geminisaw.com

EMAIL: info@geminisaw.com

CONTACT: Barbara Alvey

PRODUCTS OR SERVICES:

Ring saws, Diamond, Parts and Service.

**BRIEF ADDITIONAL
COMMENTS:**

110 Volt and 220 Volt Units.

PRODUCT TRADE NAMES:

Taurus 3, Apollo, Revolution XT.

Glass Accessories Int'l Inc

858-490-1008

FAX NUMBER: 714-962-1777

WEB: www.glassaccessories.com

EMAIL: info@glassaccessories.com

CONTACT: Steve Shupper

PRODUCTS OR SERVICES:

Toyo Glass Cutters, Speedbits, and Lubricant.

**BRIEF ADDITIONAL
COMMENTS:**

Dependable, long lasting Toyo cutters & Speedbits. Also try our new odorless, nontoxic GAI Cutting Oil with a convenient fill top.

PRODUCT TRADE NAMES:

TOYO TAP Pistol-Grip Supercutter®.

Glass Art® Magazine

8300 Hidden Valley Road,
PO Box 69
Westport, KY 40077
502-222-5631

WEB: www.glassartmagazine.com

EMAIL: info@glassartmagazine.com

CONTACT: Maureen James

PRODUCTS OR SERVICES:

Glass Art® is the definitive source for art glass professionals working in hot, warm, and cold glass offering in-depth artist profiles, marketing and trade strategies, educational opportunities, and the latest in organizational news.

These features and more make Glass Art® a must-have resource for anyone working in the glass industry.

BRIEF ADDITIONAL COMMENTS:

Available in print and digital format

PRODUCT TRADE NAMES:

Glass Art® magazine, GlassArtMagazine.com, Glass Expert Webinars™, Master Glass Artisan Lecture Series™.

Glass Bird Studios

PO Box 53582
Albuquerque, NM 87153
505-459-9828

WEB: www.modelingglass.com

EMAIL: glassbirdstudios@gmail.com

CONTACT: Lois Manno

PRODUCTS OR SERVICES:

Modeling Glass Starter Kits and Refill Sizes.

BRIEF ADDITIONAL

COMMENTS:

Modeling Glass is a two-part powdered binder and liquid medium that can be combined with glass powder or frit to make a material with the consistency of clay. Available in starter kits and sold separately in larger refill sizes. Does not affect compatibility.

PRODUCT TRADE NAMES:

Modeling Glass.

Glass Patterns Quarterly, Inc

PO Box 69
Westport, KY 40077
502-222-5631

WEB: www.glasspatterns.com

EMAIL: info@glasspatterns.com

CONTACT: Maureen James

PRODUCTS OR SERVICES:

Glass Patterns Quarterly® has been providing information and inspiration for stained and fused glass hobbyists and professional artists since 1985 with detailed, four-color beginner through advanced tutorials, a 16-page pattern pullout, and the latest news in glass techniques.

BRIEF ADDITIONAL

COMMENTS:

Glass Patterns Quarterly® is available in print and digital format

PRODUCT TRADE NAMES:

Glass Patterns Quarterly®, Glass Expert Webinars™,

Master Glass Artisan Lecture Series™, GlassPatternsQuarterly.com.

Handy Hanger Mfg

390 Creekside Dr
Onalaska, TX 77360
979-864-0556

WEB: www.handyhanger.net

EMAIL: handyhanger@rocketmail.com

CONTACT: Lori Thomas

PRODUCTS OR SERVICES:

Brass hanger inserts for hanging stained glass panels. High-temp industrial inconel wire designed for hanging fused glass.

PRODUCT TRADE NAMES:

Handy Hanger®, Finley Fusible Hanger, Ellie Fusible Hanger.

His Glassworks Inc

2000 Riverside Dr Suite 19
Asheville, NC 28804
828-254-2559
800-914-7463

FAX NUMBER: 828-254-2581

WEB: www.hisglassworks.com

EMAIL: support@hisglassworks.com

CONTACT: Mark Bolick

PRODUCTS OR SERVICES:

Coldworking tools, machinery, and accessories from diamond disks and wheels, flex laps, belt sanders, and lathes to adhesives, acid etching, and safety equipment.

BRIEF ADDITIONAL

COMMENTS:

We carry top-of-the-line tools and equipment and test all products we carry in order to offer top-notch support for all our products.

PRODUCT TRADE NAMES:

Covington Engineering, Abrasive Technology, Flex, Alpha tools, Suhner, Hxtal NYL-1, Hang Your Glass, Crystalite, Gemini Saw, 3M, Dumont Instruments, VID, MK Diamond, Husqvarna, Steinert, Cyclone Blasters, and more.

Hoevel

12102 Venice Blvd
Los Angeles, CA 90066
310-313-6829
800-959-9264

FAX NUMBER: 310-313-6848

WEB: www.hoevel.com

EMAIL: hoevel@outlook.com

CONTACT: Craig Bradley

PRODUCTS OR SERVICES:

Tools to make art glass more

creative, faster, with higher quality. Color Magic™ for added color to glass carving. Cut foiling of stained glass in half with higher quality.

BRIEF ADDITIONAL

COMMENTS:

See our website for additional product information and where to purchase all of our products.

PRODUCT TRADE NAMES:

Color Magic™ Glass Stains and Paint, Diegel Foiler, Kwik-Clean® Flux and Patina Cleaner, Kwik Crimp, Copper Magic™ Sheets, Color Magic™ Outline Pen.

Inland Craft

808 Burr Oak Dr
Westmont, IL 60559
248-583-7150

FAX NUMBER: 630-789-6476

WEB: www.inlandcraft.com

EMAIL: info@inlandcraft.com

CONTACT: Jen Merchut

PRODUCTS OR SERVICES:

Inland Craft has been manufacturing diamond grinders and diamond abrasive tools and products for the glass industry for over 30 years. Our product line ranges from glass grinders, to glass cutters, to band saw machines, to glass grinding bits, to so much more. Glass art professionals, artists, and hobbyists worldwide use and prefer Inland Craft products. All Inland Craft machines and products are proudly made in the USA.

BRIEF ADDITIONAL

COMMENTS:

Inland Craft machines and diamond abrasive products are manufactured for the use of grinding and polishing glass, stone, and other materials.

PRODUCT TRADE NAMES:

DB-100™ Band Saw, Wiz™ Glass Grinder, Wizard™ Glass Grinder, and Wizling™ Glass Grinder are all trademarks of Reentel International Inc.

Jax Chemical Company

640 South Fulton Ave
Mt Vernon, NY 10550
914-668-1818

FAX NUMBER: 914-668-8490

WEB: www.jaxchemical.com

EMAIL: info@jaxchemical.com

CONTACT: Anthony Nappi

PRODUCTS OR SERVICES:

Metal finishing solutions and Green Patina for antiquing copper, brass, and bronze. Blackeners for copper, brass, bronze, pewter, zinc, iron, steel, aluminum, and silver. Instant cleaners for brass, copper, and silver.

Johnson Manufacturing Company

114 Lost Grove Rd, PO Box 96
Princeton, IA 52768
563-289-5123
800-747-0030

FAX NUMBER: 563-289-3825

WEB: www.johnsonmfg.com

EMAIL: sales@johnsonmfg.com

CONTACT: Aaron Morrow

PRODUCTS OR SERVICES:

Manufacturers of Johnson's Pure Solders, Soldering Fluxes, Paste Solders, Flux Sticks, Sal-Blocks, and a wide variety of related chemicals and supplies.

BRIEF ADDITIONAL

COMMENTS:

Johnson Manufacturing has been around since 1909.

PRODUCT TRADE NAMES:

Johnson®, L.B. Allen, S.A. Day Products, plus Flux-N-Solder, Lloyd's, AlumaWeld, SuperBrazo, Xcel, Fluxes, Flo-Rite pastes, Super Flo™ Solder, and BrazeAL.

Kuta Glass Accessories Ltd

2B Lamb St Unit B
Georgetown, ON L7G 3M9
Canada
905-873-8800

FAX NUMBER: 905-873-8845

WEB: www.kutaglass.com

EMAIL: kuta@bellnet.ca

CONTACT: Anthony Farrugia, Ron Sakuta

PRODUCTS OR SERVICES:

Wissmach Glass, Spectrum Glass, Cascade Metals, Weller, Aanraku, Hakko Hand Tools, Venture Tape, Edco, and more.

BRIEF ADDITIONAL

COMMENTS:

Wholesale only

PRODUCT TRADE NAMES:

Wissmach Glass, Spectrum Glass, Uroboros Glass, Cascade Metals, Weller, Hakko, Aanraku, Edco, Venture Tape, Leponitt,

Gemini, Glastar, Inland,
Novacan, Stellar.

KWC Inc

3057 Nekimi Avenue
Oshkosh, WI 54902
563-221-2619
800-250-1790

WEB: www.tablefoiler.com

EMAIL: tablefoiler@gmail.com

CONTACT: Bryon Carlson

PRODUCTS OR SERVICES:

Table Foiler®, Grinder Cookie™, Magic Cutter™.

BRIEF ADDITIONAL

COMMENTS:

Looking to support the stained glass industry as needed.

Milkweed Arts

1850 W Mulberry Dr
Phoenix, AZ 85015
602-341-6580

WEB: www.milkweedartsaz.com

EMAIL: updates@milkweedartsaz.com

CONTACT: Warren Norgaard

PRODUCTS OR SERVICES:

Arizona's premier location for instruction in fused and stained glass from local, national, and international instructors, as well as a full-line fusing retail center and kiln dealer.

BRIEF ADDITIONAL

COMMENTS:

Milkweed Arts offers custom water jet cutting services, workshops in glass and non-glass mediums, and hosts the Arizona Glass Guild meetings and events.

PRODUCT TRADE NAMES:

Milkweed Arts, Raku Glass, Bullseye Glass, Jen-Ken Kilns, Evenheat Kilns, Hi-Tech Diamond, Inland, Gemini, Morton Glass Works, Hakko, Unique Glass Colors, Colors for Earth, EZ Fire Enamels, Colorline, Glassline, Papyros, Etchall, Toyo, Zyp, LookMaNoStand, MiracleMesh, and many more.

Mobile Glassblowing Studios LLC

505 West Lamar Street
Americus, GA 31709
229-352-9988
844-452-7246

WEB: www.mobileglassblowingstudios.com

EMAIL: mobileglassblowingstudios@gmail.com

CONTACT: Philip Vinson, CEO or Chuck Wells, President

PRODUCTS OR SERVICES:

We build affordable, high-quality, rugged and versatile glassblowing furnace/glory hole combos and related studio equipment and accessories.

BRIEF ADDITIONAL

COMMENTS:

We are continuing to innovate to bring you the studio equipment you need for low-cost, efficient hot glass furnace work. NEW Products for 2020 include the Baby Phoenix Furnace, a more compact version of the side-fired Phoenix Furnace, an automated CAT-60 quick-annealing electric conveyor system, which is free-standing and will work in ANY hot shop, and a variety of smaller shop tools designed to support every part of your process. Check out our website for updates and subscribe to our newsletter to hear from us as soon as new products are available! STAY SAFE & CREATIVE, FRIENDS!

PRODUCT TRADE NAMES:

Mini Dragon, Baby Dragon, Little Dragon, Big Dragon, Phoenix Furnace, Baby Phoenix Furnace, CAT-60 Annealing Tube, FATCAT-60 Annealing Tube, Independent FATCAT-60 Annealing Tube.

Monarch Glass Studio

1919 E Truman Rd
Kansas City, MO 64127
816-503-6326

WEB: www.monarchglassstudio.com

EMAIL: tyler@monarchglassstudio.com

CONTACT: Tyler Kimball

PRODUCTS OR SERVICES:

Rondels, Sheet Glass, Specialty Architectural Glass, and Blown Glass Installation Components.

BRIEF ADDITIONAL

COMMENTS:

Blown rondels are our specialty

PRODUCT TRADE NAMES:

Optic Twist Rondel, Optic Web Rondel, 77 different colors available, specialty blown sheets.

Morton Glass Works Inc

170 E Washington Street,
PO Box 465

Morton, IL 61550

309-266-5712

FAX NUMBER: 309-263-8376

WEB: www.mortonglass.com

EMAIL: mgw@mortonglass.com

CONTACT: Sherrie Abel

PRODUCTS OR SERVICES:

Manufacturer of hand tools for the Art Glass Industry.

PRODUCT TRADE NAMES:

Mini Surface Plus, Teeny Circle System, Portable Glass Shop, Safety Break System, Layout Block System, Strongline, Mr. Splash, Safety Splash, Cutter Caddy, Morton Twister, Grinder Tongs, Glass Caddy, Assembly Tray, Circle Border System, Liquid Stringer Caddy.

Nortel Manufacturing Ltd

2040 Ellesmere Rd, Bldg 18
Scarborough, ON M1H 3B6
Canada

416-438-3325

FAX NUMBER: 416-438-7140

CONTACT: Peter Norton

PRODUCTS OR SERVICES:

Manufacturer of burners, hand torches, and Polariscope Strain Viewers for hot glassworking of beads, paperweights, and larger glass items.

BRIEF ADDITIONAL

COMMENTS:

Full line of equipment and supplies for artistic and scientific glassworking, including wet abrasive cut-off saws.

PRODUCT TRADE NAMES:

Minor, MegaMinor, Midrange, Major, and RedMax Bench Burners, MultiMix, TwinFuel and Ranger Hand Torches, Nortel Cut-off Machines.

Olympic Color Rods

1050 W Nickerson St
Seattle, WA 98119
206-343-7336
800-445-7742

FAX NUMBER: 206-343-2292

WEB: www.glasscolor.com

EMAIL: sales@glasscolor.com

CONTACT: Mark Hood

PRODUCTS OR SERVICES:

Glass Color, Furnace Glass, glass tools, lampworking glass and tools.

BRIEF ADDITIONAL

COMMENTS:

Largest Reichenbach glass inventory in North America.

PRODUCT TRADE NAMES:

Reichenbach, Bomm Cullet, Cristalica Studio Glass, Spruce Pine, Jim Moore Tools, Blockhead Tools, Spiral Arts, Correll Tools, ITC Coatings, Bugeye Products, Mobile Glassblowing, Exact Torches, Coatings By Sandberg, Oceanside Glass.

Olympic Kilns

PO Box 1347,
4225 Thurmon Tanner Pkwy
Flowery Branch, GA 30542
770-967-4009
800-241-4400

FAX NUMBER: 770-967-1196

WEB: www.greatkilns.com

EMAIL: info@greatkilns.com

CONTACT: Cynthia Haugen

PRODUCTS OR SERVICES:

Manufacturer of high-temperature furnaces for hot and warm glass, ceramics, pottery, and heat-treating.

BRIEF ADDITIONAL

COMMENTS:

Gas and Electric Kilns. Custom kilns quoted upon request.

PRODUCT TRADE NAMES:

Olympic Kilns.

Paned Expressions Studios Inc

1418 Trimble Rd
Edgewood, MD 21040-3007
410-676-1248

WEB: www.panedexpressions.com

EMAIL: sgpatterns@

panedexpressions.com

CONTACT: J. L. Parker

PRODUCTS OR SERVICES:

Custom Pattern Design Service & Pattern Books on CD.

BRIEF ADDITIONAL

COMMENTS:

Patterns Designed for Hot/Cold/ Etched Glass.

PRODUCT TRADE NAMES:

Paned Expressions Studios.

Paul Wissmach Glass Company Inc

420 Stephen St, PO Box 228
Paden City, WV 26159
304-337-2253

FAX NUMBER: 304-337-8800

WEB: www.wissmachglass.com

EMAIL: wissmach@frontier.com

CONTACT: Mark Feldmeier

PRODUCTS OR SERVICES:

Manufacturer of opalescent and cathedral sheet glass. Wissmach 90™ and Wissmach 96™ fusing glass and temperable clear and colored textures.

BRIEF ADDITIONAL

COMMENTS:

Manufacturer of the widest variety of art glass in the world for 116 years.

PRODUCT TRADE NAMES:

Wissmach 90™, Wissmach 96™, Wissmach 96™ Frit, English Muffle, Aerolite, Stream X, Corella Classic, Wisspy, Granite, Ripple, Victorian Mottle, Cube, Dew Drop, Seville, Flemish, Aqualite, Seedy, Figure C, Mystic Cathedral, Mystic Streaky, Mystic Wispy, Cortex, and Matrix.

**Pottery Supply House
EUCLID KILNS**

1120 Speers Rd
Oakville, ON L6L 2X4
Canada

905-849-0671

800-296-5456

FAX NUMBER: 905-849-0001

WEB: www.euclidkilns.com

EMAIL: mail@euclidkilns.com

CONTACT: Geoff Farrow

PRODUCTS OR SERVICES:

Glass kilns, elements for any kiln, vents, controls, switches and repair parts, replacement bricks and slabs, kiln building materials, kiln furniture, and digital pyrometers.

BRIEF ADDITIONAL

COMMENTS:

Specializing in custom kilns including vertical-lift fiber kilns.

PRODUCT TRADE NAMES:

Euclid Kilns, Euclid's Elements.

Pre-Cut Patterns Inc

76 Veterans Drive Suite 130
Holland, MI 49423
616-392-4415

FAX NUMBER: 616-392-4432

WEB: www.pre-cut.com

EMAIL: lori2@pre-cut.com

CONTACT: Lori Corbat-Appeldoorn

PRODUCTS OR SERVICES:

4 mil and 10 mil vinyl stencils for abrasive and chemical etch. Custom Graphic Design services.

Armour Etch chemical etching cream, etching kits.

BRIEF ADDITIONAL

COMMENTS:

Serving customers since 1987, Original Pre-cut Patterns. Started vinyl stencils for etchers with stock designs, custom designs, and custom sizing.

Rainbow Art Glass Inc

1761 Route 34 South
Farmingdale, NJ 07727

732-681-6003

800-526-2356

FAX NUMBER: 732-681-4984

WEB: www.rainbowartglass.com

EMAIL: info@rainbowartglass.com

CONTACT: Anthony Longo

PRODUCTS OR SERVICES:

Full-line art glass inventory of over 2,000 styles and colors to choose from including antiques, architectural patterns, dichroic, flashed glass, and many more. Also related art glass supplies consisting of bevels, bevel clusters, tools, sundries, mosaics, metals, chemicals, bases, lamp forms, books, patterns, and a large assortment of all size kilns and everything for hot glass, bending, slumping, fusing, beadmaking, and lampworking.

BRIEF ADDITIONAL

COMMENTS:

For over 60 years we have provided the decorative glass architectural industry with quality service at competitive prices. We feature CJ's Chemicals, our Value Brand products, and our unique Exquisite™ line of bevel clusters. Worldwide importer and exporter.

PRODUCT TRADE NAMES:

We carry an extensive line of products from all major manufacturers including Krosno Antiques & Rondels, Schott (GNA), Verrerie de Saint-Just, Clear/Color textured architectural glass, Wissmach, Spectrum and Uroboros by Oceanside, Armstrong by Kokomo, Bullseye, Kokomo, Youghiogheny, Dichroic (Austin, CBS), Canfield, Cascade, Chicago Metallic by Cascade, Clarity, Weller, Diamond Tech, Edco, Evenheat, Exquisite™, Fletcher, Gemini, Glastar, Gryphon, Leponitt,

Morton, Novacan, Odyssey, Paragon, Toyo, Venture, Wardell, Reusche, Skutt, Hakko, System 96® and 90 COE, Value Brand, CJ's Chemicals, Aanraku, AIM, Amerway, Creative Paradise, Slumpy Mold, Colour De Verre Molds, Van Gogh.

Ransom & Randolph

3535 Briarfield Blvd, PO Box 1570
Maumee, OH 43537

419-865-9482

800-253-4502

FAX NUMBER: 419-865-9777

WEB: www.ransom-randolph.com/glass

EMAIL: rr-marketing@dentsply.com

CONTACT: Alisa Rawski

PRODUCTS OR SERVICES:

Mold materials for glass casting, plasters, silicone, and wax: R&R® Glass-Cast™ 101 BANDUST™ investment, R&R® Glass-Cast™ 400 investment, R&R® Glass-Cast™ 910 investment, R&R® Glass-Cast™ 965 investment; R&R® Mold Mix 50/50 investment, RTV2 silicone rubber HT33, AquaSphere™ wax.

PRODUCT TRADE NAMES:

R&R® Glass-Cast™ 101 BANDUST™ investment, R&R® Glass-Cast™ 400 investment, R&R® Glass-Cast™ 910 investment, R&R® Glass-Cast™ 965 investment; R&R® Mold Mix 50/50 investment, RTV2 silicone rubber HT33, AquaSphere™ wax.

Sasha's International Inc

9 Island Avenue, Suite #711

Miami Beach, FL 33139

305-695-8990

800-757-8141

FAX NUMBER: 305-695-8991

WEB: www.sashas.net

EMAIL: sashas@sashas.net

CONTACT: John Andonov

PRODUCTS OR SERVICES:

Clean-All Heavy Metals® Hand & Body Soap.

BRIEF ADDITIONAL

COMMENTS:

Stay safe! Get the lead out with Clean-All Heavy Metals® Hand & Body Soap, which safely removes lead residue.

SilkeMat®/GlasTile Inc

411 N Cedar St #B

Greensboro, NC 27401

336-580-7063

WEB: www.SilkeMat.com

EMAIL: b.cashman@glastile.com

CONTACT: Barbara Cashman

PRODUCTS OR SERVICES:

Non-carcinogenic fiber blanket, non-hazardout rigidizer and divitrification solution.

BRIEF ADDITIONAL

COMMENTS:

SilkeMat® and additional supplies available at www.bjcashman.com

PRODUCT TRADE NAMES:

SilkeMat®, SilkeMat® Rigidizer, Clarity.

Skutt Kilns

6441 SE Johnson Creek Blvd
Portland, OR 97206-9552

503-774-6000

FAX NUMBER: 503-774-7833

WEB: www.glasskilns.com

EMAIL: skutt@skutt.com

CONTACT: Mike Sievers

PRODUCTS OR SERVICES:

Electric kilns for fusing, slumping, annealing, blowing glass, and beadwork.

PRODUCT TRADE NAMES:

GlassMaster, Touchscreen, KilnMaster, GlassMaster, HotStart Pro, EnviroVent II, EnviroLink, FuseFit, Scarab, Mini Scarab, and Micro Scarab.

Slide Products Inc

430 Wheeling Rd
Wheeling, IL 60090

847-541-7220

800-323-6433

FAX NUMBER: 847-541-7986

WEB: www.slideproducts.com

EMAIL: info@slideproducts.com

CONTACT: Michael Muth

PRODUCTS OR SERVICES:

Boron Nitride Mold Release

PRODUCT TRADE NAMES:

Slide®.

Slumpy's

710 Catawba St

Belmont, NC 28012

704-829-9293

WEB: www.slumpys.com

EMAIL: sales@slumpys.com

CONTACT: Tesha Palmer

PRODUCTS OR SERVICES:

Slumpy's carries high-quality

ceramic and stainless steel molds for slumping, fusing, and draping. We also carry a wide variety of tools, supplies, kilns, and COE 96 glass. Make sure to check out our beautiful fired glass paints and unique silk screen designs.

BRIEF ADDITIONAL COMMENTS:

Slumpy's is the source for the best and most unique selection of glass molds and supplies.

Stained Glass Images

6730 Gleneagle Ave SW
Port Orchard, WA 98367
360-443-2367

WEB: www.SGImages.com

EMAIL: sgimages@ledgernet.com

CONTACT: Gene L. Mayo

PRODUCTS OR SERVICES:

Copper Foil Dispenser, Books, Patterns, Kits.

PRODUCT TRADE NAMES:

Images.

Sunshine Glassworks Ltd

111 Industrial Pkwy
Buffalo, NY 14227-2712
716-668-2918
800-828-7159

FAX NUMBER: 716-668-2932

WEB: www.sunshineglass.com

EMAIL: info@sunshineglass.com

CONTACT: Scott Emslie

PRODUCTS OR SERVICES:

Full line of materials for use in the glass arts including 1600+ colors of glass from Wissmach, Kokomo, Oceanside, Youghiogheny and others.

BRIEF ADDITIONAL COMMENTS:

Most of our orders ship same day or next day. Larger orders shipped via motor freight with reliable, low cost carriers.

PRODUCT TRADE NAMES:

Wissmach, Kokomo, Oceanside (Spectrum, Uroboros), Youghiogheny, Oceana, Venture Tape, Cascade Metals, Glastar, Gryphon, Hexacon, Amerway Solder, Canfield, Aanraku, Top Tools, Gemini, Fan Out, Toyo, Fletcher, MacInnes.

Techniglass Corporation

80 Thompson Street
North Tonawanda, NY 14120
716-564-8888
800-564-9353

FAX NUMBER: 716-564-8889

WEB: www.techniglass.com

EMAIL: info@techniglass.com

CONTACT: Mike Hacikyan

PRODUCTS OR SERVICES:

The Grinder®, Papyros® Kiln Shelf Paper, Quick-Fit Bit System®, MO-RE® Mold Release, GelBits®, Brilliant Bits®, and Aqua Flow System® Mini G® Bit System, EverWear® Bit Guard.

BRIEF ADDITIONAL COMMENTS:

Introducing State-of-the-Art Breakthrough Technology for Art Glass Enthusiasts and Experts.

PRODUCT TRADE NAMES:

The Grinder®, Papyros® Kiln Shelf Paper, Quick-Fit Bit System®, MO-RE® Mold Release, GelBits®, Brilliant Bits®, and Aqua Flow System® Mini G® Bit System, EverWear® Bit Guard.

The Flow Magazine, Inc.

PO Box 69
Westport, KY 40077
502-222-5631

WEB: www.theflowmagazine.com

EMAIL: theflow@
theflowmagazine.com

CONTACT: Maureen James - Publisher

PRODUCTS OR SERVICES:

The Flow® is a gathering place for members of the flameworking community featuring inspiring galleries, the latest in glass industry news and events, dynamic general interest articles, and cutting-edge tutorials from renowned hot glass artists.

BRIEF ADDITIONAL COMMENTS:

The Flow® magazine is available in digital format.

PRODUCT TRADE NAMES:

The Flow® magazine,
TheFlowMagazine.com

Wale Apparatus Co Inc

400 Front St
Hellertown, PA 18055
610-838-7047
800-334-9253

FAX NUMBER: 610-838-7440

WEB: www.waleapparatus.com

EMAIL: dbrucker@waleapparatus.com

CONTACT: Dan Brucker

PRODUCTS OR SERVICES:

Glassblowing tools and supplies, Walewear Protective Eyewear, Corning Pyrex® glass tubing and rod, High Temp Gloves and Sleeves.

PRODUCT TRADE NAMES:

Corning Pyrex® Nortel, Carlisle, Jen-Ken, Paragon, J Young, Evenheat, Northstar, Glass Alchemy, TAG, Momka's, Effetre, CIM.

Wardell Publications and Products

PO Box 480069
Fort Lauderdale, FL 33348
954-465-4910

WEB: www.wardellpublications.com

EMAIL: carole@
wardellpublications.com

CONTACT: Randy Wardell,
Carole Wardell

PRODUCTS OR SERVICES:

Wardell Publications has published books for Stained Glass, Fused Glass, Casting, Jewelry, and Glass Mosaics with 33 titles in print. Many are available for download in e-Book format at www.wardellpublications.com. Wardell Products also offers a line of ceramic fusing molds, the Starfire Drape mold, the Drop-Thru Mold System and the Binasphere Mold. This line of molds gives you the ability to add a cookie foot, or a wine glass-shaped foot for a professional appearance to your glass art.

BRIEF ADDITIONAL COMMENTS:

The newest Wardell product is Glass Tattoo® Stencil & Glass Tattoo® Gue. It is fun and easy to use for a new or experienced glass fuser. Instructions are on our website www.craftyglassbywardell.com.

PRODUCT TRADE NAMES:

Glass Tattoo® Stencils

Weaver Industries

PO Box 326
Denver, PA 17517
717-336-7507

FAX NUMBER: 717-336-4182

WEB: www.weaverind.com

EMAIL: jpoff@weaverind.com

CONTACT: Jerred Poff

PRODUCTS OR SERVICES:

Lampwork tools, marble molds, optic molds, 3-D push molds, stamps, graphite rods, graphite plates, graphite felt, Vin Pin, custom molds.

BRIEF ADDITIONAL COMMENTS:

At Weaver Industries, we continue to work with you the glass artists, who use our tools, in order to design, perfect, and ensure the highest quality graphite glass art tools available in the marketplace. We provide tools for all methods of glass artistry.

PRODUCT TRADE NAMES:

Vin Pins, TPT (The Perfect Tool), Fritts V-Block, Comfort Grip Marver, 12-in-1 Marble Mold.

Youghiogheny Opalescent Glass Company, Inc

300 S First St, PO Box 800
Connellsville, PA 15425
724-628-3000

FAX NUMBER: 724-628-5060

WEB: www.youghioghenyglass.com

MAIL: youghioghenyglass@
yahoo.com

CONTACT: Leanne Triggs

PRODUCTS OR SERVICES:

Stained Glass Sheets, Fusible Glass Sheets.

BRIEF ADDITIONAL COMMENTS:

Manufacturing the World's Finest Art Glass since 1976.

PRODUCT TRADE NAMES:

Stipple, High Strike Virtuoso, Reproduction Glass, Oceana, Y96, URO by Yough.



Every conceivable effort has been made to include all of the suppliers to the art glass industry. Any omissions are by the suppliers' choice or purely accidental.

PRODUCTS AND SERVICES

Acid Etching Equipment and Supplies

Milkweed Arts, AZ
Coatings By Sandberg Inc, CA
Hoewel, CA
Aanraku Glass Studios, CA
D&L Art Glass Supply, CO
AAE Glass LLC, FL
Angel Gilding, IL
Ed Hoy's International, IL
Pre-Cut Patterns Inc, MI
His Glassworks Inc, NC
Rainbow Art Glass Inc, NJ
Sunshine Glassworks Ltd, NY
American Glass Supply Company, TX

Adhesives/Epoxy

Milkweed Arts, AZ
D&L Art Glass Supply, CO
AAE Glass LLC, FL
Ed Hoy's International, IL
Slumpy's, NC
His Glassworks Inc, NC
Rainbow Art Glass Inc, NJ
Sunshine Glassworks Ltd, NY
Franklin Art Glass Studios Inc, OH
American Glass Supply Company, TX
Olympic Color Rods, WA

Beadmaking Equipment and Supplies

Aanraku Glass Studios, CA
D&L Art Glass Supply, CO
AAE Glass LLC, FL
Covington Engineering Corp, ID
Ed Hoy's International, IL
Rainbow Art Glass Inc, NJ
Sunshine Glassworks Ltd, NY
Franklin Art Glass Studios Inc, OH
Bullseye Glass Resource Center Portland, OR
Skutt Kilns, OR
Wale Apparatus Co Inc, PA
Weaver Industries, PA
Olympic Color Rods, WA
Nortel Manufacturing Ltd, ON Canada
Canadian Stained Glass Warehouse, QC Canada

Beveled Panels

Aanraku Glass Studios, CA
Ed Hoy's International, IL
Franklin Art Glass Studios Inc, OH

Beveling Equipment and Supplies

Gemini Saw Company, Inc, CA
Denver Glass Machinery Inc, CO
D&L Art Glass Supply, CO
Covington Engineering Corp, ID
Ed Hoy's International, IL
Rainbow Art Glass Inc, NJ
Franklin Art Glass Studios Inc, OH

Bevels

Brilliant Cut Bevels

Rainbow Art Glass Inc, NJ

Clusters

Franciscan Glass Co, CA
D&L Art Glass Supply, CO
Ed Hoy's International, IL
Rainbow Art Glass Inc, NJ
Sunshine Glassworks Ltd, NY
Franklin Art Glass Studios Inc, OH
Kuta Glass Accessories Ltd, ON Canada
Canadian Stained Glass Warehouse, QC Canada

Colored

Franklin Art Glass Studios Inc, OH

Custom

D&L Art Glass Supply, CO

Rainbow Art Glass Inc, NJ
Franklin Art Glass Studios Inc, OH

Dichroic

Coatings By Sandberg Inc, CA

Engraved

D&L Art Glass Supply, CO
Ed Hoy's International, IL
Rainbow Art Glass Inc, NJ
Franklin Art Glass Studios Inc, OH

Etched

D&L Art Glass Supply, CO
Ed Hoy's International, IL
Franklin Art Glass Studios Inc, OH

Glue Chip

D&L Art Glass Supply, CO
Ed Hoy's International, IL
Rainbow Art Glass Inc, NJ
Sunshine Glassworks Ltd, NY
Franklin Art Glass Studios Inc, OH
Kuta Glass Accessories Ltd, ON Canada

Sandblasted

Franklin Art Glass Studios Inc, OH

Straight Line

Franciscan Glass Co, CA
D&L Art Glass Supply, CO
Ed Hoy's International, IL
Rainbow Art Glass Inc, NJ
Sunshine Glassworks Ltd, NY
Franklin Art Glass Studios Inc, OH
Kuta Glass Accessories Ltd, ON Canada
Canadian Stained Glass Warehouse, QC Canada

Wheel Engraved

D&L Art Glass Supply, CO
Rainbow Art Glass Inc, NJ
Franklin Art Glass Studios Inc, OH
Canadian Stained Glass Warehouse, QC Canada

Bits

Milkweed Arts, AZ
Glass Accessories Int'l Inc, CA
Aanraku Glass Studios, CA
Franciscan Glass Co, CA
D&L Art Glass Supply, CO
AAE Glass LLC, FL
Ed Hoy's International, IL
Inland Craft, IL
His Glassworks Inc, NC
Rainbow Art Glass Inc, NJ
Techniglass Corporation, NY
Sunshine Glassworks Ltd, NY
Franklin Art Glass Studios Inc, OH
Fusion Headquarters Inc, OR
Olympic Color Rods, WA
Canadian Stained Glass Warehouse, QC Canada

Books

Milkweed Arts, AZ
Aanraku Glass Studios, CA
Hoewel, CA
Franciscan Glass Co, CA
D&L Art Glass Supply, CO
Wardell Publications and Products, FL
AAE Glass LLC, FL
Ed Hoy's International, IL
Glass Patterns Quarterly®, Inc, KY
Slumpy's, NC
His Glassworks Inc, NC
Rainbow Art Glass Inc, NJ
Sunshine Glassworks Ltd, NY
Franklin Art Glass Studios Inc, OH
Fusion Headquarters Inc, OR
Wale Apparatus Co Inc, PA
Olympic Color Rods, WA

Stained Glass Images, WA
Canadian Stained Glass Warehouse, QC Canada

Box Feet

Aanraku Glass Studios, CA
D&L Art Glass Supply, CO
Rainbow Art Glass Inc, NJ
Franklin Art Glass Studios Inc, OH
Canadian Stained Glass Warehouse, QC Canada

Brass Nameplates/Engraved

Aanraku Glass Studios, CA

Brooms and Brushes

Milkweed Arts, AZ
Franciscan Glass Co, CA
D&L Art Glass Supply, CO
Ed Hoy's International, IL
Slumpy's, NC
Rainbow Art Glass Inc, NJ
Sunshine Glassworks Ltd, NY
Franklin Art Glass Studios Inc, OH
Kuta Glass Accessories Ltd, ON Canada
Canadian Stained Glass Warehouse, QC Canada

Buffers

Aanraku Glass Studios, CA
Ed Hoy's International, IL
His Glassworks Inc, NC
Rainbow Art Glass Inc, NJ
Franklin Art Glass Studios Inc, OH
Canadian Stained Glass Warehouse, QC Canada

Burnishers

Milkweed Arts, AZ
Aanraku Glass Studios, CA
Franciscan Glass Co, CA
Hoewel, CA
D&L Art Glass Supply, CO
Ed Hoy's International, IL
Rainbow Art Glass Inc, NJ
Sunshine Glassworks Ltd, NY
Franklin Art Glass Studios Inc, OH
Kuta Glass Accessories Ltd, ON Canada
Canadian Stained Glass Warehouse, QC Canada

Came

Brass

Franciscan Glass Co, CA
D&L Art Glass Supply, CO
Ed Hoy's International, IL
Rainbow Art Glass Inc, NJ
Sunshine Glassworks Ltd, NY
Franklin Art Glass Studios Inc, OH
Cascade Lead Products, BC Canada
Kuta Glass Accessories Ltd, ON Canada
Canadian Stained Glass Warehouse, QC Canada

Brass-Crowned Lead

Franciscan Glass Co, CA
D&L Art Glass Supply, CO
Ed Hoy's International, IL
Rainbow Art Glass Inc, NJ
Franklin Art Glass Studios Inc, OH
Cascade Lead Products, BC Canada
Kuta Glass Accessories Ltd, ON Canada
Canadian Stained Glass Warehouse, QC Canada

Copper

Franciscan Glass Co, CA
D&L Art Glass Supply, CO
Ed Hoy's International, IL
Rainbow Art Glass Inc, NJ
Sunshine Glassworks Ltd, NY
Franklin Art Glass Studios Inc, OH
Cascade Lead Products, BC Canada
Kuta Glass Accessories Ltd, ON Canada
Canadian Stained Glass Warehouse, QC Canada

Curling

Franklin Art Glass Studios Inc, OH

Cushioned

Franklin Art Glass Studios Inc, OH

Lead

Aanraku Glass Studios, CA
Franciscan Glass Co, CA
D&L Art Glass Supply, CO
Ed Hoy's International, IL
Rainbow Art Glass Inc, NJ
Sunshine Glassworks Ltd, NY
Franklin Art Glass Studios Inc, OH
Cascade Lead Products, BC Canada
Kuta Glass Accessories Ltd, ON Canada
Canadian Stained Glass Warehouse, QC Canada

Reinforced

Franciscan Glass Co, CA
D&L Art Glass Supply, CO
Ed Hoy's International, IL
Rainbow Art Glass Inc, NJ
Sunshine Glassworks Ltd, NY
Franklin Art Glass Studios Inc, OH
Cascade Lead Products, BC Canada
Kuta Glass Accessories Ltd, ON Canada
Canadian Stained Glass Warehouse, QC Canada

Zinc

Franciscan Glass Co, CA
Aanraku Glass Studios, CA
D&L Art Glass Supply, CO
Ed Hoy's International, IL
Rainbow Art Glass Inc, NJ
Sunshine Glassworks Ltd, NY
Franklin Art Glass Studios Inc, OH
Cascade Lead Products, BC Canada
Kuta Glass Accessories Ltd, ON Canada
Canadian Stained Glass Warehouse, QC Canada

Came Equipment

D&L Art Glass Supply, CO
Ed Hoy's International, IL
Rainbow Art Glass Inc, NJ
Sunshine Glassworks Ltd, NY
Franklin Art Glass Studios Inc, OH
Cascade Lead Products, BC Canada
Kuta Glass Accessories Ltd, ON Canada
Canadian Stained Glass Warehouse, QC Canada

Chain

Franciscan Glass Co, CA
D&L Art Glass Supply, CO
Ed Hoy's International, IL
Rainbow Art Glass Inc, NJ
Sunshine Glassworks Ltd, NY
Franklin Art Glass Studios Inc, OH
Canadian Stained Glass Warehouse, QC Canada

Channel

Brass

Franciscan Glass Co, CA
D&L Art Glass Supply, CO
Ed Hoy's International, IL
Rainbow Art Glass Inc, NJ
Sunshine Glassworks Ltd, NY
Franklin Art Glass Studios Inc, OH
Cascade Lead Products, BC Canada
Kuta Glass Accessories Ltd, ON Canada
Canadian Stained Glass Warehouse, QC Canada

Copper

Franciscan Glass Co, CA
D&L Art Glass Supply, CO
Ed Hoy's International, IL
Rainbow Art Glass Inc, NJ
Sunshine Glassworks Ltd, NY
Franklin Art Glass Studios Inc, OH

Cascade Lead Products, BC Canada
Kuta Glass Accessories Ltd, ON Canada
Canadian Stained Glass Warehouse, QC Canada

Filigree

D&L Art Glass Supply, CO
Rainbow Art Glass Inc, NJ
Franklin Art Glass Studios Inc, OH
Canadian Stained Glass Warehouse, QC Canada

Lead

Franciscan Glass Co, CA
D&L Art Glass Supply, CO
Ed Hoy's International, IL
Rainbow Art Glass Inc, NJ
Sunshine Glassworks Ltd, NY
Franklin Art Glass Studios Inc, OH
Cascade Lead Products, BC Canada
Kuta Glass Accessories Ltd, ON Canada
Canadian Stained Glass Warehouse, QC Canada

Zinc

Franciscan Glass Co, CA
D&L Art Glass Supply, CO
Ed Hoy's International, IL
Rainbow Art Glass Inc, NJ
Sunshine Glassworks Ltd, NY
Franklin Art Glass Studios Inc, OH
Cascade Lead Products, BC Canada
Kuta Glass Accessories Ltd, ON Canada
Canadian Stained Glass Warehouse, QC Canada

Chemical Supplies

Franciscan Glass Co, CA
Hoevel, CA
Aanraku Glass Studios, CA
D&L Art Glass Supply, CO
AAE Glass LLC, FL
Johnson Manufacturing Company, IA
Angel Gilding, IL
Slide Products Inc, IL
Ed Hoy's International, IL
SilkeMat®/GlasTile Inc, NC
Rainbow Art Glass Inc, NJ
Sunshine Glassworks Ltd, NY
Jax Chemical Company, NY
Techniglass Corporation, NY
Franklin Art Glass Studios Inc, OH
Fusion Headquarters Inc, OR
Wale Apparatus Co Inc, PA
Kuta Glass Accessories Ltd, ON Canada
Canadian Stained Glass Warehouse, QC Canada

Clocks and Parts

Milkweed Arts, AZ
Aanraku Glass Studios, CA
D&L Art Glass Supply, CO
Ed Hoy's International, IL
Slumpy's, NC
Rainbow Art Glass Inc, NJ
Franklin Art Glass Studios Inc, OH
American Glass Supply Company, TX
Canadian Stained Glass Warehouse, QC Canada

Computer Design Systems

AAE Glass LLC, FL
Ed Hoy's International, IL
Franklin Art Glass Studios Inc, OH

Computer Software

Ed Hoy's International, IL
Franklin Art Glass Studios Inc, OH

Consulting

Milkweed Arts, AZ
Aanraku Glass Studios, CA
D&L Art Glass Supply, CO
AAE Glass LLC, FL
Glass Patterns Quarterly®, Inc, KY
Pre-Cut Patterns Inc, MI
Rainbow Art Glass Inc, NJ

Fusion Headquarters Inc, OR
American Glass Supply Company, TX

Cutting Equipment and Supplies

Milkweed Arts, AZ
Glass Accessories Int'l Inc, CA
Franciscan Glass Co, CA
Gemini Saw Company, Inc, CA
Aanraku Glass Studios, CA
D&L Art Glass Supply, CO
AAE Glass LLC, FL
Covington Engineering Corp, ID
Inland Craft, IL
Ed Hoy's International, IL
Morton Glass Works Inc, IL
His Glassworks Inc, NC
Rainbow Art Glass Inc, NJ
Sunshine Glassworks Ltd, NY
Techniglass Corporation, NY
Franklin Art Glass Studios Inc, OH
Fusion Headquarters Inc, OR
Wale Apparatus Co Inc, PA
American Glass Supply Company, TX
Olympic Color Rods, WA
Kuta Glass Accessories Ltd, ON Canada
Nortel Manufacturing Ltd, ON Canada
Canadian Stained Glass Warehouse, QC Canada

Design Services

Aanraku Glass Studios, CA
AAE Glass LLC, FL
Pre-Cut Patterns Inc, MI
Rainbow Art Glass Inc, NJ
Franklin Art Glass Studios Inc, OH
Fusion Headquarters Inc, OR
Wale Apparatus Co Inc, PA

Diamond Tools

Milkweed Arts, AZ
Aanraku Glass Studios, CA
Gemini Saw Company, Inc, CA
Franciscan Glass Co, CA
Denver Glass Machinery Inc, CO
D&L Art Glass Supply, CO
AAE Glass LLC, FL
Covington Engineering Corp, ID
Inland Craft, IL
Ed Hoy's International, IL
His Glassworks Inc, NC
Rainbow Art Glass Inc, NJ
Techniglass Corporation, NY
Franklin Art Glass Studios Inc, OH
Fusion Headquarters Inc, OR
Wale Apparatus Co Inc, PA
American Glass Supply Company, TX
Olympic Color Rods, WA
Canadian Stained Glass Warehouse, QC Canada

Display Items

Milkweed Arts, AZ
Bullseye Glass Resource Center Los Angeles, CA
Bullseye Glass Resource Center Bay Area, CA
D&L Art Glass Supply, CO
AAE Glass LLC, FL
Ed Hoy's International, IL
Rainbow Art Glass Inc, NJ
Bullseye Glass Resource Center Santa Fe, NM
Bullseye Glass Resource Center New York, NY
Franklin Art Glass Studios Inc, OH
Fusion Headquarters Inc, OR

Doors and Entrances

Franklin Art Glass Studios Inc, OH

Drills

Franciscan Glass Co, CA
Aanraku Glass Studios, CA
D&L Art Glass Supply, CO
AAE Glass LLC, FL
Covington Engineering Corp, ID
Ed Hoy's International, IL
Inland Craft, IL
His Glassworks Inc, NC

Rainbow Art Glass Inc, NJ
Sunshine Glassworks Ltd, NY
Franklin Art Glass Studios Inc, OH
Fusion Headquarters Inc, OR
American Glass Supply Company, TX
Canadian Stained Glass Warehouse, QC Canada

Edging Machines

Gemini Saw Company, Inc, CA
D&L Art Glass Supply, CO
Denver Glass Machinery Inc, CO
Inland Craft, IL
Ed Hoy's International, IL
Sunshine Glassworks Ltd, NY
Canadian Stained Glass Warehouse, QC Canada

Electrical Parts

Ed Hoy's International, IL
Rainbow Art Glass Inc, NJ
Sunshine Glassworks Ltd, NY
Franklin Art Glass Studios Inc, OH
Kuta Glass Accessories Ltd, ON Canada
Canadian Stained Glass Warehouse, QC Canada

Enamels

Milkweed Arts, AZ
Hoevel, CA
D&L Art Glass Supply, CO
AAE Glass LLC, FL
Ed Hoy's International, IL
Rainbow Art Glass Inc, NJ
Sunshine Glassworks Ltd, NY
Franklin Art Glass Studios Inc, OH
Fusion Headquarters Inc, OR
American Glass Supply Company, TX

Engraving Equipment and Supplies

Milkweed Arts, AZ
Denver Glass Machinery Inc, CO
D&L Art Glass Supply, CO
AAE Glass LLC, FL
Covington Engineering Corp, ID
Ed Hoy's International, IL
Inland Craft, IL
Pre-Cut Patterns Inc, MI
His Glassworks Inc, NC
Rainbow Art Glass Inc, NJ
Franklin Art Glass Studios Inc, OH
Fusion Headquarters Inc, OR
Wale Apparatus Co Inc, PA
Olympic Color Rods, WA
Canadian Stained Glass Warehouse, QC Canada

Enlargers

Franciscan Glass Co, CA
Franklin Art Glass Studios Inc, OH
Canadian Stained Glass Warehouse, QC Canada

Felt Sheets/Pads/Wheels

D&L Art Glass Supply, CO
Denver Glass Machinery Inc, CO
Covington Engineering Corp, ID
Ed Hoy's International, IL
His Glassworks Inc, NC
Rainbow Art Glass Inc, NJ
Sunshine Glassworks Ltd, NY
Wale Apparatus Co Inc, PA
Canadian Stained Glass Warehouse, QC Canada

Fids

Milkweed Arts, AZ
Hoevel, CA
Franciscan Glass Co, CA
Aanraku Glass Studios, CA
D&L Art Glass Supply, CO
Ed Hoy's International, IL
Rainbow Art Glass Inc, NJ
Sunshine Glassworks Ltd, NY
Franklin Art Glass Studios Inc, OH
Kuta Glass Accessories Ltd, ON Canada
Canadian Stained Glass Warehouse, QC Canada

Figurines Lead/Pewter

Franciscan Glass Co, CA
D&L Art Glass Supply, CO
Ed Hoy's International, IL
Franklin Art Glass Studios Inc, OH
Canadian Stained Glass Warehouse, QC Canada

Filigrees

D&L Art Glass Supply, CO
Ed Hoy's International, IL
Rainbow Art Glass Inc, NJ
Franklin Art Glass Studios Inc, OH
Canadian Stained Glass Warehouse, QC Canada

Finishing Compound

Milkweed Arts, AZ
Franciscan Glass Co, CA
D&L Art Glass Supply, CO
Ed Hoy's International, IL
Rainbow Art Glass Inc, NJ
Sunshine Glassworks Ltd, NY
Franklin Art Glass Studios Inc, OH
Kuta Glass Accessories Ltd, ON Canada
Canadian Stained Glass Warehouse, QC Canada

Flux/Flux Remover

Milkweed Arts, AZ
Aanraku Glass Studios, CA
Franciscan Glass Co, CA
Hoevel, CA
D&L Art Glass Supply, CO
Johnson Manufacturing Company, IA
Ed Hoy's International, IL
Rainbow Art Glass Inc, NJ
Sunshine Glassworks Ltd, NY
Franklin Art Glass Studios Inc, OH
Bullseye Glass Resource Center Portland, OR
Kuta Glass Accessories Ltd, ON Canada
Canadian Stained Glass Warehouse, QC Canada

Foil

Milkweed Arts, AZ
Bullseye Glass Resource Center Los Angeles, CA
Franciscan Glass Co, CA
Aanraku Glass Studios, CA
Bullseye Glass Resource Center Bay Area, CA
D&L Art Glass Supply, CO
Ed Hoy's International, IL
Rainbow Art Glass Inc, NJ
Bullseye Glass Resource Center Santa Fe, NM
Edco Supply, NY
Bullseye Glass Resource Center New York, NY
Sunshine Glassworks Ltd, NY
Franklin Art Glass Studios Inc, OH
Bullseye Glass Resource Center Portland, OR
Wale Apparatus Co Inc, PA
Olympic Color Rods, WA
Kuta Glass Accessories Ltd, ON Canada
Canadian Stained Glass Warehouse, QC Canada

Foil Crimpers/Dispensers/Machines/Rollers

Franciscan Glass Co, CA
Hoevel, CA
D&L Art Glass Supply, CO
Ed Hoy's International, IL
Rainbow Art Glass Inc, NJ
Sunshine Glassworks Ltd, NY
Franklin Art Glass Studios Inc, OH
Stained Glass Images, WA
KWC Inc, WI
Kuta Glass Accessories Ltd, ON Canada
Canadian Stained Glass Warehouse, QC Canada

Frames

Domes

Ed Hoy's International, IL
Franklin Art Glass Studios Inc, OH

Metal

Bullseye Glass Resource Center Bay Area, CA
Bullseye Glass Resource Center Los Angeles, CA
Ed Hoy's International, IL
Slumpy's, NC
Bullseye Glass Resource Center Santa Fe, NM
Bullseye Glass Resource Center New York, NY
Franklin Art Glass Studios Inc, OH
Bullseye Glass Resource Center Portland, OR
Kuta Glass Accessories Ltd, ON Canada

Wood

Aanraku Glass Studios, CA
Franciscan Glass Co, CA
D&L Art Glass Supply, CO
Ed Hoy's International, IL
Slumpy's, NC
Rainbow Art Glass Inc, NJ
Franklin Art Glass Studios Inc, OH

Framing Equipment and Supplies

Aanraku Glass Studios, CA
Franciscan Glass Co, CA
D&L Art Glass Supply, CO
Ed Hoy's International, IL
Rainbow Art Glass Inc, NJ
Sunshine Glassworks Ltd, NY
Franklin Art Glass Studios Inc, OH
Handy Hanger Mfg, TX

Frits

Milkweed Arts, AZ
Aanraku Glass Studios, CA
Bullseye Glass Resource Center Bay Area, CA
Franciscan Glass Co, CA
Coatings By Sandberg Inc, CA
Bullseye Glass Resource Center Los Angeles, CA
D&L Art Glass Supply, CO
AAE Glass LLC, FL
Ed Hoy's International, IL
Slumpy's, NC
Rainbow Art Glass Inc, NJ
Bullseye Glass Resource Center Santa Fe, NM
Bullseye Glass Resource Center New York, NY
Sunshine Glassworks Ltd, NY
Franklin Art Glass Studios Inc, OH
Bullseye Glass Resource Center Portland, OR
Wale Apparatus Co Inc, PA
American Glass Supply Company, TX
Olympic Color Rods, WA
Gaffer Glass USA Ltd, WA
Canadian Stained Glass Warehouse, QC Canada

Furnaces

Milkweed Arts, AZ
Aanraku Glass Studios, CA
Denver Glass Machinery Inc, CO
D&L Art Glass Supply, CO
Mobile Glassblowing Studios LLC, GA
Ed Hoy's International, IL
Cress Mfg. Company Inc, NV
Franklin Art Glass Studios Inc, OH
Olympic Color Rods, WA

Furniture

Bullseye Glass Resource Center Los Angeles, CA
Aanraku Glass Studios, CA
Bullseye Glass Resource Center Bay Area, CA
D&L Art Glass Supply, CO
AAE Glass LLC, FL
Mobile Glassblowing Studios LLC, GA
Ed Hoy's International, IL
Slumpy's, NC
Rainbow Art Glass Inc, NJ
Bullseye Glass Resource Center Santa Fe, NM
Bullseye Glass Resource Center New York, NY
Sunshine Glassworks Ltd, NY
Franklin Art Glass Studios Inc, OH

Fusing Equipment and Supplies

Milkweed Arts, AZ
Hoevel, CA

Aanraku Glass Studios, CA
Bullseye Glass Resource Center Bay Area, CA
Gemini Saw Company, Inc, CA
Franciscan Glass Co, CA
Bullseye Glass Resource Center Los Angeles, CA
Coatings By Sandberg Inc, CA
D&L Art Glass Supply, CO
Denver Glass Machinery Inc, CO
Wardell Publications and Products, FL
AAE Glass LLC, FL
Ed Hoy's International, IL
Slumpy's, NC
SilkeMat®/GlasTile Inc, NC
Rainbow Art Glass Inc, NJ
Glass Bird Studios, NM
Bullseye Glass Resource Center Santa Fe, NM
Bullseye Glass Resource Center New York, NY
Techniglass Corporation, NY
Sunshine Glassworks Ltd, NY
Franklin Art Glass Studios Inc, OH
Skutt Kilns, OR
Bullseye Glass Resource Center Portland, OR
Fusion Headquarters Inc, OR
American Glass Supply Company, TX
Handy Hanger Mfg, TX
Olympic Color Rods, WA
Paul Wissmach Glass Company Inc, WV
Kuta Glass Accessories Ltd, ON Canada
Pottery Supply House, ON Canada
Nortel Manufacturing Ltd, ON Canada
Canadian Stained Glass Warehouse, QC Canada

Fusing Instruction

Milkweed Arts, AZ
Coatings By Sandberg Inc, CA
Bullseye Glass Resource Center Bay Area, CA
Bullseye Glass Resource Center Los Angeles, CA
Aanraku Glass Studios, CA
D&L Art Glass Supply, CO
AAE Glass LLC, FL
Wardell Publications and Products, FL
Ed Hoy's International, IL
Glass Patterns Quarterly®, Inc, KY
Slumpy's, NC
Rainbow Art Glass Inc, NJ
Bullseye Glass Resource Center Santa Fe, NM
Bullseye Glass Resource Center New York, NY
Franklin Art Glass Studios Inc, OH
Fusion Headquarters Inc, OR
Bullseye Glass Resource Center Portland, OR
American Glass Supply Company, TX
Olympic Color Rods, WA
Canadian Stained Glass Warehouse, QC Canada

Giftware

Milkweed Arts, AZ
D&L Art Glass Supply, CO
AAE Glass LLC, FL
Ed Hoy's International, IL
Rainbow Art Glass Inc, NJ
Franklin Art Glass Studios Inc, OH

Glass

Antique

Ed Hoy's International, IL
Rainbow Art Glass Inc, NJ
Sunshine Glassworks Ltd, NY
Franklin Art Glass Studios Inc, OH

Antique Mouth-Blown

Aanraku Glass Studios, CA
D&L Art Glass Supply, CO
Ed Hoy's International, IL
Monarch Glass Studio, MO
Rainbow Art Glass Inc, NJ
Franklin Art Glass Studios Inc, OH
Canadian Stained Glass Warehouse, QC Canada

Beads

Aanraku Glass Studios, CA
Coatings By Sandberg Inc, CA
D&L Art Glass Supply, CO
Ed Hoy's International, IL

Rainbow Art Glass Inc, NJ
Franklin Art Glass Studios Inc, OH
Bullseye Glass Resource Center Portland, OR
Olympic Color Rods, WA
Canadian Stained Glass Warehouse, QC Canada

Bent

Franklin Art Glass Studios Inc, OH
Fusion Headquarters Inc, OR
Canadian Stained Glass Warehouse, QC Canada

Blanks

Milkweed Arts, AZ
Bullseye Glass Resource Center Los Angeles, CA
Bullseye Glass Resource Center Bay Area, CA
Rainbow Art Glass Inc, NJ
Bullseye Glass Resource Center Santa Fe, NM
Bullseye Glass Resource Center New York, NY
Franklin Art Glass Studios Inc, OH

Blocks

Coatings By Sandberg Inc, CA
D&L Art Glass Supply, CO
Rainbow Art Glass Inc, NJ
Franklin Art Glass Studios Inc, OH

Borosilicate Rod and Tubing

Coatings By Sandberg Inc, CA
D&L Art Glass Supply, CO
Ed Hoy's International, IL
Wale Apparatus Co Inc, PA

Cathedral

Bullseye Glass Resource Center Los Angeles, CA
Aanraku Glass Studios, CA
Coatings By Sandberg Inc, CA
Bullseye Glass Resource Center Bay Area, CA
Franciscan Glass Co, CA
D&L Art Glass Supply, CO
Ed Hoy's International, IL
Rainbow Art Glass Inc, NJ
Bullseye Glass Resource Center Santa Fe, NM
Bullseye Glass Resource Center New York, NY
Sunshine Glassworks Ltd, NY
Franklin Art Glass Studios Inc, OH
Fusion Headquarters Inc, OR
Bullseye Glass Resource Center Portland, OR
American Glass Supply Company, TX
Paul Wissmach Glass Company Inc, WV
Kuta Glass Accessories Ltd, ON Canada
Canadian Stained Glass Warehouse, QC Canada

Catspaw

Bullseye Glass Resource Center Bay Area, CA
Bullseye Glass Resource Center Los Angeles, CA
Aanraku Glass Studios, CA
D&L Art Glass Supply, CO
Ed Hoy's International, IL
Rainbow Art Glass Inc, NJ
Bullseye Glass Resource Center Santa Fe, NM
Bullseye Glass Resource Center New York, NY
Sunshine Glassworks Ltd, NY
Franklin Art Glass Studios Inc, OH
Kuta Glass Accessories Ltd, ON Canada
Canadian Stained Glass Warehouse, QC Canada

Clear Sheet

Bullseye Glass Resource Center Los Angeles, CA
Aanraku Glass Studios, CA
Coatings By Sandberg Inc, CA
Franciscan Glass Co, CA
Bullseye Glass Resource Center Bay Area, CA
D&L Art Glass Supply, CO
AAE Glass LLC, FL
Ed Hoy's International, IL
Slumpy's, NC
Rainbow Art Glass Inc, NJ
Bullseye Glass Resource Center Santa Fe, NM
Sunshine Glassworks Ltd, NY
Bullseye Glass Resource Center New York, NY
Franklin Art Glass Studios Inc, OH
Bullseye Glass Resource Center Portland, OR

Fusion Headquarters Inc, OR
 American Glass Supply Company, TX
 Paul Wissmach Glass Company Inc, WV
 Kuta Glass Accessories Ltd, ON Canada
 Canadian Stained Glass Warehouse, QC Canada

Crystal Sheet

Coatings By Sandberg Inc, CA
 D&L Art Glass Supply, CO
 AAE Glass LLC, FL
 Rainbow Art Glass Inc, NJ
 Franklin Art Glass Studios Inc, OH
 Fusion Headquarters Inc, OR
 American Glass Supply Company, TX

Cylinders

D&L Art Glass Supply, CO

Dalle de Verre

Franklin Art Glass Studios Inc, OH
 Canadian Stained Glass Warehouse, QC Canada

Dichroic

Milkweed Arts, AZ
 Coatings By Sandberg Inc, CA
 Aanraku Glass Studios, CA
 Franciscan Glass Co, CA
 Bullseye Glass Resource Center Bay Area, CA
 Bullseye Glass Resource Center Los Angeles, CA
 D&L Art Glass Supply, CO
 AAE Glass LLC, FL
 Ed Hoy's International, IL
 Slumpy's, NC
 Rainbow Art Glass Inc, NJ
 Bullseye Glass Resource Center Santa Fe, NM
 Sunshine Glassworks Ltd, NY
 Bullseye Glass Resource Center New York, NY
 Franklin Art Glass Studios Inc, OH
 Fusion Headquarters Inc, OR
 Bullseye Glass Resource Center Portland, OR
 Wale Apparatus Co Inc, PA
 American Glass Supply Company, TX
 Olympic Color Rods, WA
 Kuta Glass Accessories Ltd, ON Canada
 Canadian Stained Glass Warehouse, QC Canada

English Muffle

Aanraku Glass Studios, CA
 D&L Art Glass Supply, CO
 Ed Hoy's International, IL
 Rainbow Art Glass Inc, NJ
 Sunshine Glassworks Ltd, NY
 Franklin Art Glass Studios Inc, OH
 Paul Wissmach Glass Company Inc, WV
 Kuta Glass Accessories Ltd, ON Canada
 Canadian Stained Glass Warehouse, QC Canada

Etched

Coatings By Sandberg Inc, CA
 AAE Glass LLC, FL
 Ed Hoy's International, IL
 Rainbow Art Glass Inc, NJ
 Sunshine Glassworks Ltd, NY
 Franklin Art Glass Studios Inc, OH
 Kuta Glass Accessories Ltd, ON Canada

Faceted

Coatings By Sandberg Inc, CA
 Franciscan Glass Co, CA
 Rainbow Art Glass Inc, NJ
 Sunshine Glassworks Ltd, NY
 Franklin Art Glass Studios Inc, OH
 Canadian Stained Glass Warehouse, QC Canada

Frosted

Coatings By Sandberg Inc, CA
 Franciscan Glass Co, CA
 D&L Art Glass Supply, CO
 Ed Hoy's International, IL
 Rainbow Art Glass Inc, NJ
 Sunshine Glassworks Ltd, NY

Franklin Art Glass Studios Inc, OH
 Kuta Glass Accessories Ltd, ON Canada

Fusible

Milkweed Arts, AZ
 Franciscan Glass Co, CA
 Aanraku Glass Studios, CA
 Coatings By Sandberg Inc, CA
 D&L Art Glass Supply, CO
 AAE Glass LLC, FL
 Ed Hoy's International, IL
 Slumpy's, NC
 Rainbow Art Glass Inc, NJ
 Sunshine Glassworks Ltd, NY
 Franklin Art Glass Studios Inc, OH
 Fusion Headquarters Inc, OR
 Bullseye Glass Resource Center Portland, OR
 Youghiogheny Opalescent Glass Company, Inc., PA
 American Glass Supply Company, TX
 Olympic Color Rods, WA
 Paul Wissmach Glass Company Inc, WV
 Kuta Glass Accessories Ltd, ON Canada
 Canadian Stained Glass Warehouse, QC Canada

German Antique

Franciscan Glass Co, CA
 Aanraku Glass Studios, CA
 D&L Art Glass Supply, CO
 Ed Hoy's International, IL
 Rainbow Art Glass Inc, NJ
 Franklin Art Glass Studios Inc, OH
 Canadian Stained Glass Warehouse, QC Canada

Glue Chip

Aanraku Glass Studios, CA
 Franciscan Glass Co, CA
 D&L Art Glass Supply, CO
 Ed Hoy's International, IL
 Rainbow Art Glass Inc, NJ
 Sunshine Glassworks Ltd, NY
 Franklin Art Glass Studios Inc, OH
 Paul Wissmach Glass Company Inc, WV
 Kuta Glass Accessories Ltd, ON Canada
 Canadian Stained Glass Warehouse, QC Canada

Hand-Rolled

Milkweed Arts, AZ
 Aanraku Glass Studios, CA
 Franciscan Glass Co, CA
 D&L Art Glass Supply, CO
 AAE Glass LLC, FL
 Ed Hoy's International, IL
 Rainbow Art Glass Inc, NJ
 Sunshine Glassworks Ltd, NY
 Franklin Art Glass Studios Inc, OH
 Youghiogheny Opalescent Glass Company, Inc., PA
 American Glass Supply Company, TX
 Olympic Color Rods, WA
 Gaffer Glass USA Ltd, WA
 Kuta Glass Accessories Ltd, ON Canada
 Canadian Stained Glass Warehouse, QC Canada

Iridescent

Milkweed Arts, AZ
 Franciscan Glass Co, CA
 Aanraku Glass Studios, CA
 D&L Art Glass Supply, CO
 AAE Glass LLC, FL
 Ed Hoy's International, IL
 Slumpy's, NC
 Rainbow Art Glass Inc, NJ
 Sunshine Glassworks Ltd, NY
 Franklin Art Glass Studios Inc, OH
 Bullseye Glass Resource Center Portland, OR
 Fusion Headquarters Inc, OR
 American Glass Supply Company, TX
 Olympic Color Rods, WA
 Paul Wissmach Glass Company Inc, WV
 Kuta Glass Accessories Ltd, ON Canada
 Canadian Stained Glass Warehouse, QC Canada

Jewels

Franciscan Glass Co, CA
 Aanraku Glass Studios, CA
 D&L Art Glass Supply, CO
 Ed Hoy's International, IL
 Rainbow Art Glass Inc, NJ
 Sunshine Glassworks Ltd, NY
 Franklin Art Glass Studios Inc, OH
 Kuta Glass Accessories Ltd, ON Canada
 Canadian Stained Glass Warehouse, QC Canada

Laminated

Franciscan Glass Co, CA
 Franklin Art Glass Studios Inc, OH

Machine-Made Antique

Aanraku Glass Studios, CA
 Franciscan Glass Co, CA
 D&L Art Glass Supply, CO
 Ed Hoy's International, IL
 Rainbow Art Glass Inc, NJ
 Sunshine Glassworks Ltd, NY
 Franklin Art Glass Studios Inc, OH
 Canadian Stained Glass Warehouse, QC Canada

Marbles

Franciscan Glass Co, CA

Mirror

Aanraku Glass Studios, CA
 Franciscan Glass Co, CA
 D&L Art Glass Supply, CO
 Ed Hoy's International, IL
 Rainbow Art Glass Inc, NJ
 Sunshine Glassworks Ltd, NY
 Franklin Art Glass Studios Inc, OH
 Kuta Glass Accessories Ltd, ON Canada

Mottled

Franciscan Glass Co, CA
 Aanraku Glass Studios, CA
 D&L Art Glass Supply, CO
 Ed Hoy's International, IL
 Rainbow Art Glass Inc, NJ
 Sunshine Glassworks Ltd, NY
 Franklin Art Glass Studios Inc, OH
 Bullseye Glass Resource Center Portland, OR
 Youghiogheny Opalescent Glass Company, Inc., PA
 Paul Wissmach Glass Company Inc, WV
 Kuta Glass Accessories Ltd, ON Canada
 Canadian Stained Glass Warehouse, QC Canada

Nuggets

Franciscan Glass Co, CA
 Aanraku Glass Studios, CA
 D&L Art Glass Supply, CO
 AAE Glass LLC, FL
 Ed Hoy's International, IL
 Rainbow Art Glass Inc, NJ
 Sunshine Glassworks Ltd, NY
 Franklin Art Glass Studios Inc, OH
 Olympic Color Rods, WA
 Kuta Glass Accessories Ltd, ON Canada
 Canadian Stained Glass Warehouse, QC Canada

Obscure

Franciscan Glass Co, CA
 Aanraku Glass Studios, CA
 D&L Art Glass Supply, CO
 Ed Hoy's International, IL
 Rainbow Art Glass Inc, NJ
 Sunshine Glassworks Ltd, NY
 Franklin Art Glass Studios Inc, OH
 Paul Wissmach Glass Company Inc, WV

Opalescent

Milkweed Arts, AZ
 Aanraku Glass Studios, CA
 Franciscan Glass Co, CA
 D&L Art Glass Supply, CO

AAE Glass LLC, FL
 Ed Hoy's International, IL
 Slumpy's, NC
 Rainbow Art Glass Inc, NJ
 Sunshine Glassworks Ltd, NY
 Franklin Art Glass Studios Inc, OH
 Bullseye Glass Resource Center Portland, OR
 Fusion Headquarters Inc, OR
 Youghiogheny Opalescent Glass Company, Inc., PA
 American Glass Supply Company, TX
 Olympic Color Rods, WA
 Gaffer Glass USA Ltd, WA
 Paul Wissmach Glass Company Inc, WV
 Kuta Glass Accessories Ltd, ON Canada
 Canadian Stained Glass Warehouse, QC Canada

Opaque

Milkweed Arts, AZ
 Franciscan Glass Co, CA
 D&L Art Glass Supply, CO
 AAE Glass LLC, FL
 Ed Hoy's International, IL
 Rainbow Art Glass Inc, NJ
 Sunshine Glassworks Ltd, NY
 Franklin Art Glass Studios Inc, OH
 American Glass Supply Company, TX
 Gaffer Glass USA Ltd, WA
 Olympic Color Rods, WA
 Paul Wissmach Glass Company Inc, WV
 Kuta Glass Accessories Ltd, ON Canada
 Canadian Stained Glass Warehouse, QC Canada

Plate

Franciscan Glass Co, CA
 Coatings By Sandberg Inc, CA
 D&L Art Glass Supply, CO
 AAE Glass LLC, FL
 Rainbow Art Glass Inc, NJ
 Sunshine Glassworks Ltd, NY
 Franklin Art Glass Studios Inc, OH

Prisms

AAE Glass LLC, FL
 Franklin Art Glass Studios Inc, OH

Pyrex Rod and Tubing

Coatings By Sandberg Inc, CA
 D&L Art Glass Supply, CO
 Wale Apparatus Co Inc, PA

Semi-Antique

Aanraku Glass Studios, CA
 Franciscan Glass Co, CA
 D&L Art Glass Supply, CO
 Ed Hoy's International, IL
 Rainbow Art Glass Inc, NJ
 Sunshine Glassworks Ltd, NY
 Franklin Art Glass Studios Inc, OH
 Kuta Glass Accessories Ltd, ON Canada
 Canadian Stained Glass Warehouse, QC Canada

Stringers

Milkweed Arts, AZ
 Franciscan Glass Co, CA
 Aanraku Glass Studios, CA
 Coatings By Sandberg Inc, CA
 D&L Art Glass Supply, CO
 AAE Glass LLC, FL
 Ed Hoy's International, IL
 Slumpy's, NC
 Rainbow Art Glass Inc, NJ
 Sunshine Glassworks Ltd, NY
 Franklin Art Glass Studios Inc, OH
 Fusion Headquarters Inc, OR
 Bullseye Glass Resource Center Portland, OR
 Wale Apparatus Co Inc, PA
 American Glass Supply Company, TX
 Olympic Color Rods, WA
 Kuta Glass Accessories Ltd, ON Canada
 Canadian Stained Glass Warehouse, QC Canada

Glass Batch

D&L Art Glass Supply, CO
AAE Glass LLC, FL
Rainbow Art Glass Inc, NJ
Olympic Color Rods, WA

Glass Breaking Tools

Milkweed Arts, AZ
Franciscan Glass Co, CA
Bullseye Glass Resource Center Bay Area, CA
Bullseye Glass Resource Center Los Angeles, CA
Aanraku Glass Studios, CA
D&L Art Glass Supply, CO
AAE Glass LLC, FL
Ed Hoy's International, IL
Morton Glass Works Inc, IL
Slumpy's, NC
Rainbow Art Glass Inc, NJ
Bullseye Glass Resource Center Santa Fe, NM
Sunshine Glassworks Ltd, NY
Bullseye Glass Resource Center New York, NY
Franklin Art Glass Studios Inc, OH
Fusion Headquarters Inc, OR
Bullseye Glass Resource Center Portland, OR
Wale Apparatus Co Inc, PA
American Glass Supply Company, TX
Olympic Color Rods, WA
Kuta Glass Accessories Ltd, ON Canada
Canadian Stained Glass Warehouse, QC Canada

Glass Cleaner

Milkweed Arts, AZ
Bullseye Glass Resource Center Bay Area, CA
Bullseye Glass Resource Center Los Angeles, CA
Hoewel, CA
Franciscan Glass Co, CA
Aanraku Glass Studios, CA
D&L Art Glass Supply, CO
AAE Glass LLC, FL
Ed Hoy's International, IL
Rainbow Art Glass Inc, NJ
Bullseye Glass Resource Center Santa Fe, NM
Bullseye Glass Resource Center New York, NY
Franklin Art Glass Studios Inc, OH
Bullseye Glass Resource Center Portland, OR
Canadian Stained Glass Warehouse, QC Canada

Glass Cutters

Milkweed Arts, AZ
Glass Accessories Int'l Inc, CA
Bullseye Glass Resource Center Bay Area, CA
Aanraku Glass Studios, CA
Bullseye Glass Resource Center Los Angeles, CA
Gemini Saw Company, Inc, CA
Franciscan Glass Co, CA
D&L Art Glass Supply, CO
AAE Glass LLC, FL
Inland Craft, IL
Ed Hoy's International, IL
Slumpy's, NC
Rainbow Art Glass Inc, NJ
Bullseye Glass Resource Center Santa Fe, NM
Bullseye Glass Resource Center New York, NY
Sunshine Glassworks Ltd, NY
Franklin Art Glass Studios Inc, OH
Fusion Headquarters Inc, OR
Bullseye Glass Resource Center Portland, OR
Wale Apparatus Co Inc, PA
American Glass Supply Company, TX
Olympic Color Rods, WA
Nortel Manufacturing Ltd, ON Canada
Kuta Glass Accessories Ltd, ON Canada
Canadian Stained Glass Warehouse, QC Canada

Glass Frosting Supplies

Franciscan Glass Co, CA
D&L Art Glass Supply, CO
Ed Hoy's International, IL
His Glassworks Inc, NC
Rainbow Art Glass Inc, NJ
Franklin Art Glass Studios Inc, OH

Glass Painting

Milkweed Arts, AZ
Hoewel, CA
D&L Art Glass Supply, CO
AAE Glass LLC, FL
Ed Hoy's International, IL
Slumpy's, NC
Rainbow Art Glass Inc, NJ
Sunshine Glassworks Ltd, NY
Franklin Art Glass Studios Inc, OH
Fusion Headquarters Inc, OR
Bullseye Glass Resource Center Portland, OR
American Glass Supply Company, TX
Canadian Stained Glass Warehouse, QC Canada

Glass Publications

Milkweed Arts, AZ
Wardell Publications and Products, FL
AAE Glass LLC, FL
Glass Art® Magazine, KY
Glass Patterns Quarterly®, Inc, KY
The Flow® Magazine, Inc, KY
Fusion Headquarters Inc, OR

Glass Rods

Bullseye Glass Resource Center Los Angeles, CA
Aanraku Glass Studios, CA
Coatings By Sandberg Inc, CA
Bullseye Glass Resource Center Bay Area, CA
D&L Art Glass Supply, CO
AAE Glass LLC, FL
Ed Hoy's International, IL
Slumpy's, NC
Rainbow Art Glass Inc, NJ
Bullseye Glass Resource Center Santa Fe, NM
Bullseye Glass Resource Center New York, NY
Sunshine Glassworks Ltd, NY
Franklin Art Glass Studios Inc, OH
Bullseye Glass Resource Center Portland, OR
Wale Apparatus Co Inc, PA
American Glass Supply Company, TX
Gaffer Glass USA Ltd, WA
Olympic Color Rods, WA
Kuta Glass Accessories Ltd, ON Canada
Canadian Stained Glass Warehouse, QC Canada

Glass Tiles

AAE Glass LLC, FL
Ed Hoy's International, IL
Franklin Art Glass Studios Inc, OH
Fusion Headquarters Inc, OR
Canadian Stained Glass Warehouse, QC Canada

Glassblowing Equipment and Supplies

Blowpipe

Ed Hoy's International, IL
Rainbow Art Glass Inc, NJ
Fusion Headquarters Inc, OR
Olympic Color Rods, WA

Cullet

D&L Art Glass Supply, CO
Ed Hoy's International, IL
Rainbow Art Glass Inc, NJ
Franklin Art Glass Studios Inc, OH
Olympic Color Rods, WA
Paul Wissmach Glass Company Inc, WV

Frits

Bullseye Glass Resource Center Bay Area, CA
Coatings By Sandberg Inc, CA
D&L Art Glass Supply, CO
AAE Glass LLC, FL
Ed Hoy's International, IL
Rainbow Art Glass Inc, NJ
Bullseye Glass Resource Center Santa Fe, NM
Bullseye Glass Resource Center New York, NY
Sunshine Glassworks Ltd, NY
Franklin Art Glass Studios Inc, OH
Bullseye Glass Resource Center Portland, OR
Fusion Headquarters Inc, OR

Wale Apparatus Co Inc, PA
Gaffer Glass USA Ltd, WA
Olympic Color Rods, WA
Paul Wissmach Glass Company Inc, WV
Kuta Glass Accessories Ltd, ON Canada
Canadian Stained Glass Warehouse, QC Canada

Glory Holes

Denver Glass Machinery Inc, CO
D&L Art Glass Supply, CO
Mobile Glassblowing Studios LLC, GA
Rainbow Art Glass Inc, NJ
Fusion Headquarters Inc, OR

Pontils

Rainbow Art Glass Inc, NJ
Fusion Headquarters Inc, OR

Powders

Bullseye Glass Resource Center Bay Area, CA
D&L Art Glass Supply, CO
AAE Glass LLC, FL
Ed Hoy's International, IL
Rainbow Art Glass Inc, NJ
Bullseye Glass Resource Center Santa Fe, NM
Bullseye Glass Resource Center New York, NY
Sunshine Glassworks Ltd, NY
Franklin Art Glass Studios Inc, OH
Fusion Headquarters Inc, OR
Bullseye Glass Resource Center Portland, OR
Olympic Color Rods, WA
Gaffer Glass USA Ltd, WA
Paul Wissmach Glass Company Inc, WV
Kuta Glass Accessories Ltd, ON Canada
Canadian Stained Glass Warehouse, QC Canada

Rods

Coatings By Sandberg Inc, CA
Bullseye Glass Resource Center Bay Area, CA
D&L Art Glass Supply, CO
AAE Glass LLC, FL
Ed Hoy's International, IL
Rainbow Art Glass Inc, NJ
Bullseye Glass Resource Center Santa Fe, NM
Bullseye Glass Resource Center New York, NY
Sunshine Glassworks Ltd, NY
Franklin Art Glass Studios Inc, OH
Bullseye Glass Resource Center Portland, OR
Fusion Headquarters Inc, OR
Weaver Industries, PA
Wale Apparatus Co Inc, PA
Olympic Color Rods, WA
Gaffer Glass USA Ltd, WA
Kuta Glass Accessories Ltd, ON Canada
Canadian Stained Glass Warehouse, QC Canada

Tools

Gemini Saw Company, Inc, CA
D&L Art Glass Supply, CO
Mobile Glassblowing Studios LLC, GA
Ed Hoy's International, IL
Rainbow Art Glass Inc, NJ
Franklin Art Glass Studios Inc, OH
Fusion Headquarters Inc, OR
Bullseye Glass Resource Center Portland, OR
Wale Apparatus Co Inc, PA
Weaver Industries, PA
Gaffer Glass USA Ltd, WA
Olympic Color Rods, WA

Glazing Products

Franciscan Glass Co, CA
D&L Art Glass Supply, CO
Rainbow Art Glass Inc, NJ
Sunshine Glassworks Ltd, NY
Franklin Art Glass Studios Inc, OH
American Glass Supply Company, TX
Canadian Stained Glass Warehouse, QC Canada

Glue Chipping Glue

Angel Gilding, IL
Sunshine Glassworks Ltd, NY
Canadian Stained Glass Warehouse, QC Canada

Grinding Equipment and Supplies

Gemini Saw Company, Inc, CA
Franciscan Glass Co, CA
Denver Glass Machinery Inc, CO
D&L Art Glass Supply, CO
AAE Glass LLC, FL
Covington Engineering Corp, ID
Morton Glass Works Inc, IL
Inland Craft, IL
Ed Hoy's International, IL
His Glassworks Inc, NC
Rainbow Art Glass Inc, NJ
Sunshine Glassworks Ltd, NY
Techniglass Corporation, NY
Franklin Art Glass Studios Inc, OH
Bullseye Glass Resource Center Portland, OR
Fusion Headquarters Inc, OR
Wale Apparatus Co Inc, PA
American Glass Supply Company, TX
Kuta Glass Accessories Ltd, ON Canada
Canadian Stained Glass Warehouse, QC Canada

Hand Painted Medallions

D&L Art Glass Supply, CO
Ed Hoy's International, IL
Fusion Headquarters Inc, OR

Hardware

Franciscan Glass Co, CA
D&L Art Glass Supply, CO
AAE Glass LLC, FL
Ed Hoy's International, IL
Rainbow Art Glass Inc, NJ
Sunshine Glassworks Ltd, NY
Franklin Art Glass Studios Inc, OH
Fusion Headquarters Inc, OR

Installation Clips

Bullseye Glass Resource Center Los Angeles, CA
Franciscan Glass Co, CA
Bullseye Glass Resource Center Bay Area, CA
Ed Hoy's International, IL
Rainbow Art Glass Inc, NJ
Bullseye Glass Resource Center Santa Fe, NM
Bullseye Glass Resource Center New York, NY
Sunshine Glassworks Ltd, NY
Franklin Art Glass Studios Inc, OH

Internet Services

Bullseye Glass Resource Center Bay Area, CA
AAE Glass LLC, FL
Rainbow Art Glass Inc, NJ
Bullseye Glass Resource Center Santa Fe, NM
Bullseye Glass Resource Center New York, NY
Franklin Art Glass Studios Inc, OH
Bullseye Glass Resource Center Portland, OR
Canadian Stained Glass Warehouse, QC Canada

Jewelry Supplies

Gemini Saw Company, Inc, CA
Franciscan Glass Co, CA
Aanraku Glass Studios, CA
D&L Art Glass Supply, CO
AAE Glass LLC, FL
Ed Hoy's International, IL
Rainbow Art Glass Inc, NJ
Franklin Art Glass Studios Inc, OH
American Glass Supply Company, TX
Kuta Glass Accessories Ltd, ON Canada
Canadian Stained Glass Warehouse, QC Canada

Kiln Equipment and Supplies

Ceramic Kiln Paper

Milkweed Arts, AZ
Aanraku Glass Studios, CA
Bullseye Glass Resource Center Bay Area, CA
Franciscan Glass Co, CA
Bullseye Glass Resource Center Los Angeles, CA
Denver Glass Machinery Inc, CO
D&L Art Glass Supply, CO
AAE Glass LLC, FL

Olympic Kilns, GA
Ed Hoy's International, IL
Slumpy's, NC
Rainbow Art Glass Inc, NJ
Bullseye Glass Resource Center Santa Fe, NM
Sunshine Glassworks Ltd, NY
Bullseye Glass Resource Center New York, NY
Techniglass Corporation, NY
Franklin Art Glass Studios Inc, OH
Fusion Headquarters Inc, OR
American Glass Supply Company, TX
Kuta Glass Accessories Ltd, ON Canada
Pottery Supply House, ON Canada
Canadian Stained Glass Warehouse, QC Canada

Coils

Denver Glass Machinery Inc, CO
D&L Art Glass Supply, CO
AAE Glass LLC, FL
Olympic Kilns, GA
Ed Hoy's International, IL
Cress Mfg. Company Inc, NV
Fusion Headquarters Inc, OR
American Glass Supply Company, TX
Kuta Glass Accessories Ltd, ON Canada
Pottery Supply House, ON Canada

Controllers

Franciscan Glass Co, CA
Aanraku Glass Studios, CA
D&L Art Glass Supply, CO
AAE Glass LLC, FL
Olympic Kilns, GA
Ed Hoy's International, IL
Rainbow Art Glass Inc, NJ
Cress Mfg. Company Inc, NV
Sunshine Glassworks Ltd, NY
Franklin Art Glass Studios Inc, OH
Fusion Headquarters Inc, OR
Skutt Kilns, OR
Wale Apparatus Co Inc, PA
American Glass Supply Company, TX
Kuta Glass Accessories Ltd, ON Canada
Pottery Supply House, ON Canada

Fiber Board

Milkweed Arts, AZ
Bullseye Glass Resource Center Bay Area, CA
Aanraku Glass Studios, CA
Bullseye Glass Resource Center Los Angeles, CA
D&L Art Glass Supply, CO
Denver Glass Machinery Inc, CO
AAE Glass LLC, FL
Olympic Kilns, GA
Ed Hoy's International, IL
Slumpy's, NC
Rainbow Art Glass Inc, NJ
Bullseye Glass Resource Center Santa Fe, NM
Sunshine Glassworks Ltd, NY
Bullseye Glass Resource Center New York, NY
Skutt Kilns, OR
Fusion Headquarters Inc, OR
Bullseye Glass Resource Center Portland, OR
Wale Apparatus Co Inc, PA
American Glass Supply Company, TX
Pottery Supply House, ON Canada
Kuta Glass Accessories Ltd, ON Canada
Canadian Stained Glass Warehouse, QC Canada

Firebricks

Milkweed Arts, AZ
Bullseye Glass Resource Center Los Angeles, CA
Franciscan Glass Co, CA
Bullseye Glass Resource Center Bay Area, CA
Aanraku Glass Studios, CA
Denver Glass Machinery Inc, CO
D&L Art Glass Supply, CO
AAE Glass LLC, FL
Olympic Kilns, GA
Ed Hoy's International, IL
Slumpy's, NC
Bullseye Glass Resource Center Santa Fe, NM
Cress Mfg. Company Inc, NV
Bullseye Glass Resource Center New York, NY
Skutt Kilns, OR

Fusion Headquarters Inc, OR
American Glass Supply Company, TX
Pottery Supply House, ON Canada

Kilns

Milkweed Arts, AZ
Bullseye Glass Resource Center Bay Area, CA
Franciscan Glass Co, CA
Bullseye Glass Resource Center Los Angeles, CA
Aanraku Glass Studios, CA
D&L Art Glass Supply, CO
Denver Glass Machinery Inc, CO
AAE Glass LLC, FL
Olympic Kilns, GA
Ed Hoy's International, IL
Slumpy's, NC
Rainbow Art Glass Inc, NJ
Bullseye Glass Resource Center Santa Fe, NM
Cress Mfg. Company Inc, NV
Bullseye Glass Resource Center New York, NY
Sunshine Glassworks Ltd, NY
Franklin Art Glass Studios Inc, OH
Fusion Headquarters Inc, OR
Bullseye Glass Resource Center Portland, OR
Skutt Kilns, OR
Wale Apparatus Co Inc, PA
American Glass Supply Company, TX
Kuta Glass Accessories Ltd, ON Canada
Pottery Supply House, ON Canada
Canadian Stained Glass Warehouse, QC Canada

Kiln Wash

Milkweed Arts, AZ
Franciscan Glass Co, CA
Bullseye Glass Resource Center Bay Area, CA
Aanraku Glass Studios, CA
Bullseye Glass Resource Center Los Angeles, CA
D&L Art Glass Supply, CO
Denver Glass Machinery Inc, CO
AAE Glass LLC, FL
Olympic Kilns, GA
Ed Hoy's International, IL
Rainbow Art Glass Inc, NJ
Bullseye Glass Resource Center Santa Fe, NM
Bullseye Glass Resource Center New York, NY
Sunshine Glassworks Ltd, NY
Franklin Art Glass Studios Inc, OH
Skutt Kilns, OR
Fusion Headquarters Inc, OR
Bullseye Glass Resource Center Portland, OR
Wale Apparatus Co Inc, PA
American Glass Supply Company, TX
Olympic Color Rods, WA
Kuta Glass Accessories Ltd, ON Canada
Pottery Supply House, ON Canada
Canadian Stained Glass Warehouse, QC Canada

Microwave Kilns

D&L Art Glass Supply, CO
Ed Hoy's International, IL
Slumpy's, NC
Rainbow Art Glass Inc, NJ
American Glass Supply Company, TX

Posts

Milkweed Arts, AZ
Bullseye Glass Resource Center Bay Area, CA
Aanraku Glass Studios, CA
Bullseye Glass Resource Center Los Angeles, CA
D&L Art Glass Supply, CO
Denver Glass Machinery Inc, CO
AAE Glass LLC, FL
Olympic Kilns, GA
Ed Hoy's International, IL
Slumpy's, NC
Rainbow Art Glass Inc, NJ
Bullseye Glass Resource Center Santa Fe, NM
Cress Mfg. Company Inc, NV
Bullseye Glass Resource Center New York, NY
Sunshine Glassworks Ltd, NY
Franklin Art Glass Studios Inc, OH
Fusion Headquarters Inc, OR
Skutt Kilns, OR
Wale Apparatus Co Inc, PA
American Glass Supply Company, TX

Pottery Supply House, ON Canada
Kuta Glass Accessories Ltd, ON Canada
Canadian Stained Glass Warehouse, QC Canada

Pyrometers

Franciscan Glass Co, CA
Aanraku Glass Studios, CA
D&L Art Glass Supply, CO
AAE Glass LLC, FL
Olympic Kilns, GA
Ed Hoy's International, IL
Rainbow Art Glass Inc, NJ
Cress Mfg. Company Inc, NV
Sunshine Glassworks Ltd, NY
Franklin Art Glass Studios Inc, OH
Fusion Headquarters Inc, OR
Skutt Kilns, OR
Wale Apparatus Co Inc, PA
American Glass Supply Company, TX
Pottery Supply House, ON Canada
Kuta Glass Accessories Ltd, ON Canada
Canadian Stained Glass Warehouse, QC Canada

Pyrometric Cones

Aanraku Glass Studios, CA
D&L Art Glass Supply, CO
AAE Glass LLC, FL
Olympic Kilns, GA
Ed Hoy's International, IL
Slumpy's, NC
American Glass Supply Company, TX
Pottery Supply House, ON Canada

Shelf Primer

Milkweed Arts, AZ
Aanraku Glass Studios, CA
Bullseye Glass Resource Center Los Angeles, CA
Bullseye Glass Resource Center Bay Area, CA
Franciscan Glass Co, CA
Denver Glass Machinery Inc, CO
D&L Art Glass Supply, CO
AAE Glass LLC, FL
Olympic Kilns, GA
Ed Hoy's International, IL
Slumpy's, NC
Rainbow Art Glass Inc, NJ
Bullseye Glass Resource Center Santa Fe, NM
Sunshine Glassworks Ltd, NY
Techniglass Corporation, NY
Bullseye Glass Resource Center New York, NY
Franklin Art Glass Studios Inc, OH
Bullseye Glass Resource Center Portland, OR
Skutt Kilns, OR
Fusion Headquarters Inc, OR
American Glass Supply Company, TX
Kuta Glass Accessories Ltd, ON Canada
Pottery Supply House, ON Canada
Canadian Stained Glass Warehouse, QC Canada

Shelves

Milkweed Arts, AZ
Franciscan Glass Co, CA
Bullseye Glass Resource Center Bay Area, CA
Bullseye Glass Resource Center Los Angeles, CA
Aanraku Glass Studios, CA
Denver Glass Machinery Inc, CO
D&L Art Glass Supply, CO
AAE Glass LLC, FL
Olympic Kilns, GA
Ed Hoy's International, IL
Rainbow Art Glass Inc, NJ
Bullseye Glass Resource Center Santa Fe, NM
Sunshine Glassworks Ltd, NY
Bullseye Glass Resource Center New York, NY
Franklin Art Glass Studios Inc, OH
Skutt Kilns, OR
Fusion Headquarters Inc, OR
Wale Apparatus Co Inc, PA
American Glass Supply Company, TX
Kuta Glass Accessories Ltd, ON Canada
Pottery Supply House, ON Canada
Canadian Stained Glass Warehouse, QC Canada

Spray

Milkweed Arts, AZ
Franciscan Glass Co, CA
D&L Art Glass Supply, CO
AAE Glass LLC, FL
Slide Products Inc, IL
Ed Hoy's International, IL
Slumpy's, NC
Rainbow Art Glass Inc, NJ
Techniglass Corporation, NY
Sunshine Glassworks Ltd, NY
Franklin Art Glass Studios Inc, OH
Fusion Headquarters Inc, OR
American Glass Supply Company, TX
Kuta Glass Accessories Ltd, ON Canada

Kits

Aeroscopes

Franciscan Glass Co, CA
D&L Art Glass Supply, CO
Ed Hoy's International, IL
Rainbow Art Glass Inc, NJ
Franklin Art Glass Studios Inc, OH

Bookends

D&L Art Glass Supply, CO
Ed Hoy's International, IL
Sunshine Glassworks Ltd, NY
Franklin Art Glass Studios Inc, OH

Boxes

Milkweed Arts, AZ
Franciscan Glass Co, CA
D&L Art Glass Supply, CO
Ed Hoy's International, IL
Rainbow Art Glass Inc, NJ
Sunshine Glassworks Ltd, NY
Franklin Art Glass Studios Inc, OH

Clocks

Milkweed Arts, AZ
Franciscan Glass Co, CA
D&L Art Glass Supply, CO
Ed Hoy's International, IL
Rainbow Art Glass Inc, NJ
Franklin Art Glass Studios Inc, OH

Etching

Milkweed Arts, AZ
D&L Art Glass Supply, CO
AAE Glass LLC, FL
Ed Hoy's International, IL
Pre-Cut Patterns Inc, MI
Franklin Art Glass Studios Inc, OH

Fusing

Milkweed Arts, AZ
Bullseye Glass Resource Center Bay Area, CA
Bullseye Glass Resource Center Los Angeles, CA
Coatings By Sandberg Inc, CA
D&L Art Glass Supply, CO
Wardell Publications and Products, FL
AAE Glass LLC, FL
Ed Hoy's International, IL
Rainbow Art Glass Inc, NJ
Glass Bird Studios, NM
Bullseye Glass Resource Center Santa Fe, NM
Bullseye Glass Resource Center New York, NY
Franklin Art Glass Studios Inc, OH
American Glass Supply Company, TX
Paul Wissmach Glass Company Inc, WV

Glass Painting

Milkweed Arts, AZ
Hoevel, CA
D&L Art Glass Supply, CO
AAE Glass LLC, FL

Ed Hoy's International, IL
Rainbow Art Glass Inc, NJ
Sunshine Glassworks Ltd, NY
Franklin Art Glass Studios Inc, OH

Jewelry/Beads

D&L Art Glass Supply, CO
AAE Glass LLC, FL
Ed Hoy's International, IL
Rainbow Art Glass Inc, NJ
Franklin Art Glass Studios Inc, OH
Wale Apparatus Co Inc, PA

Kaleidoscopes

Milkweed Arts, AZ
Franciscan Glass Co, CA
D&L Art Glass Supply, CO
Ed Hoy's International, IL
Rainbow Art Glass Inc, NJ
Franklin Art Glass Studios Inc, OH

Lamp Bases

Milkweed Arts, AZ
Franciscan Glass Co, CA
D&L Art Glass Supply, CO
Ed Hoy's International, IL
Rainbow Art Glass Inc, NJ
Sunshine Glassworks Ltd, NY
Franklin Art Glass Studios Inc, OH

Lamps

Franciscan Glass Co, CA
Aanraku Glass Studios, CA
D&L Art Glass Supply, CO
Ed Hoy's International, IL
Rainbow Art Glass Inc, NJ
Franklin Art Glass Studios Inc, OH

Mobiles

Franciscan Glass Co, CA
Franklin Art Glass Studios Inc, OH

Night Lights

Milkweed Arts, AZ
Franciscan Glass Co, CA
D&L Art Glass Supply, CO
Rainbow Art Glass Inc, NJ
Sunshine Glassworks Ltd, NY
Franklin Art Glass Studios Inc, OH

Suncatchers

Milkweed Arts, AZ
Coatings By Sandberg Inc, CA
Franciscan Glass Co, CA
D&L Art Glass Supply, CO
Ed Hoy's International, IL
Rainbow Art Glass Inc, NJ
Franklin Art Glass Studios Inc, OH

Laminating Supplies

His Glassworks Inc, NC

Lamps

Bases

Milkweed Arts, AZ
Aanraku Glass Studios, CA
Franciscan Glass Co, CA
D&L Art Glass Supply, CO
Ed Hoy's International, IL
Slumpy's, NC
Rainbow Art Glass Inc, NJ
Sunshine Glassworks Ltd, NY
Franklin Art Glass Studios Inc, OH
Canadian Stained Glass Warehouse, QC Canada

Caps

Franciscan Glass Co, CA
Aanraku Glass Studios, CA
D&L Art Glass Supply, CO
Ed Hoy's International, IL

Rainbow Art Glass Inc, NJ
Sunshine Glassworks Ltd, NY
Franklin Art Glass Studios Inc, OH
Kuta Glass Accessories Ltd, ON Canada
Canadian Stained Glass Warehouse, QC Canada

Custom

Franciscan Glass Co, CA
Aanraku Glass Studios, CA
Ed Hoy's International, IL

Forms

Aanraku Glass Studios, CA
Franciscan Glass Co, CA
D&L Art Glass Supply, CO
Ed Hoy's International, IL
Rainbow Art Glass Inc, NJ
Sunshine Glassworks Ltd, NY
Franklin Art Glass Studios Inc, OH
Canadian Stained Glass Warehouse, QC Canada

Glass Globes

Aanraku Glass Studios, CA
Franklin Art Glass Studios Inc, OH

Lamp Shades

Franciscan Glass Co, CA
Aanraku Glass Studios, CA
Rainbow Art Glass Inc, NJ
Franklin Art Glass Studios Inc, OH

Lighting Parts

Aanraku Glass Studios, CA
D&L Art Glass Supply, CO
Ed Hoy's International, IL
Rainbow Art Glass Inc, NJ
Sunshine Glassworks Ltd, NY
Franklin Art Glass Studios Inc, OH
Kuta Glass Accessories Ltd, ON Canada

Molds

Bullseye Glass Resource Center Bay Area, CA
Franciscan Glass Co, CA
Aanraku Glass Studios, CA
Bullseye Glass Resource Center Los Angeles, CA
D&L Art Glass Supply, CO
Ed Hoy's International, IL
Slumpy's, NC
Rainbow Art Glass Inc, NJ
Bullseye Glass Resource Center Santa Fe, NM
Bullseye Glass Resource Center New York, NY
Sunshine Glassworks Ltd, NY
Franklin Art Glass Studios Inc, OH
Weaver Industries, PA

Outdoor Lanterns

Franklin Art Glass Studios Inc, OH

Panels

Aanraku Glass Studios, CA
Rainbow Art Glass Inc, NJ
Franklin Art Glass Studios Inc, OH

Patterns

Aanraku Glass Studios, CA
Franciscan Glass Co, CA
D&L Art Glass Supply, CO
Wardell Publications and Products, FL
Ed Hoy's International, IL
Glass Patterns Quarterly®, Inc, KY
Paned Expressions Studios Inc, MD
Rainbow Art Glass Inc, NJ
Franklin Art Glass Studios Inc, OH
Canadian Stained Glass Warehouse, QC Canada

Resale

Aanraku Glass Studios, CA
Rainbow Art Glass Inc, NJ
Franklin Art Glass Studios Inc, OH

Tiffany Style

Aanraku Glass Studios, CA
Franciscan Glass Co, CA
Ed Hoy's International, IL
Rainbow Art Glass Inc, NJ
Franklin Art Glass Studios Inc, OH

Wall

Franciscan Glass Co, CA
Aanraku Glass Studios, CA
Bullseye Glass Resource Center Los Angeles, CA
Bullseye Glass Resource Center Bay Area, CA
Ed Hoy's International, IL
Bullseye Glass Resource Center Santa Fe, NM
Bullseye Glass Resource Center New York, NY

Lampworking Equipment

Milkweed Arts, AZ
Coatings By Sandberg Inc, CA
Gemini Saw Company, Inc, CA
Denver Glass Machinery Inc, CO
D&L Art Glass Supply, CO
Ed Hoy's International, IL
Rainbow Art Glass Inc, NJ
Wale Apparatus Co Inc, PA
Olympic Color Rods, WA
Nortel Manufacturing Ltd, ON Canada

Lapidary Equipment

Gemini Saw Company, Inc, CA
D&L Art Glass Supply, CO
Covington Engineering Corp, ID
Ed Hoy's International, IL
Inland Craft, IL
His Glassworks Inc, NC

Layout Fixtures

Morton Glass Works Inc, IL
Rainbow Art Glass Inc, NJ
Sunshine Glassworks Ltd, NY

Lead Equipment and Supplies

Franciscan Glass Co, CA
D&L Art Glass Supply, CO
Ed Hoy's International, IL
Rainbow Art Glass Inc, NJ
Sunshine Glassworks Ltd, NY
Franklin Art Glass Studios Inc, OH
Cascade Lead Products, BC Canada
Kuta Glass Accessories Ltd, ON Canada
Canadian Stained Glass Warehouse, QC Canada

Lead, Reinforced

Franciscan Glass Co, CA
Aanraku Glass Studios, CA
D&L Art Glass Supply, CO
Ed Hoy's International, IL
Rainbow Art Glass Inc, NJ
Sunshine Glassworks Ltd, NY
Franklin Art Glass Studios Inc, OH
Cascade Lead Products, BC Canada
Kuta Glass Accessories Ltd, ON Canada
Canadian Stained Glass Warehouse, QC Canada

Light Boxes

D&L Art Glass Supply, CO
Franklin Art Glass Studios Inc, OH

Masking Materials

Paper Resist

Franciscan Glass Co, CA
AAE Glass LLC, FL
Ed Hoy's International, IL
Rainbow Art Glass Inc, NJ
Edco Supply, NY
Franklin Art Glass Studios Inc, OH
Canadian Stained Glass Warehouse, QC Canada

Photo Resist

AAE Glass LLC, FL

Pre-cut Resist

AAE Glass LLC, FL
Franklin Art Glass Studios Inc, OH

Rubber Resist

Milkweed Arts, AZ
D&L Art Glass Supply, CO
AAE Glass LLC, FL
His Glassworks Inc, NC
Rainbow Art Glass Inc, NJ
Olympic Color Rods, WA

Vinyl Resist

Milkweed Arts, AZ
D&L Art Glass Supply, CO
AAE Glass LLC, FL
Ed Hoy's International, IL
Rainbow Art Glass Inc, NJ
Edco Supply, NY
Franklin Art Glass Studios Inc, OH
Canadian Stained Glass Warehouse, QC Canada

Metal Clay

Milkweed Arts, AZ
Hoevel, CA
D&L Art Glass Supply, CO
Ed Hoy's International, IL

Mirroring Supplies

Angel Gilding, IL

Mirror Remover

Angel Gilding, IL

Mold Release

Slide Products Inc, IL
Techniglass Corporation, NY

Mold-Making Equipment and Supplies

Milkweed Arts, AZ
Bullseye Glass Resource Center Bay Area, CA
Bullseye Glass Resource Center Los Angeles, CA
D&L Art Glass Supply, CO
AAE Glass LLC, FL
Ed Hoy's International, IL
SilkeMat®/GlasTile Inc, NC
Rainbow Art Glass Inc, NJ
Bullseye Glass Resource Center Santa Fe, NM
Bullseye Glass Resource Center New York, NY
Ransom & Randolph, OH
Franklin Art Glass Studios Inc, OH
Bullseye Glass Resource Center Portland, OR
American Glass Supply Company, TX
Olympic Color Rods, WA
Canadian Stained Glass Warehouse, QC Canada

Molds, Premade

Milkweed Arts, AZ
Franciscan Glass Co, CA
Bullseye Glass Resource Center Bay Area, CA
Bullseye Glass Resource Center Los Angeles, CA
D&L Art Glass Supply, CO
Wardell Publications and Products, FL
AAE Glass LLC, FL
Ed Hoy's International, IL
Slumpy's, NC
Rainbow Art Glass Inc, NJ
Bullseye Glass Resource Center Santa Fe, NM
Bullseye Glass Resource Center New York, NY
Sunshine Glassworks Ltd, NY
Bullseye Glass Resource Center Portland, OR
American Glass Supply Company, TX
Olympic Color Rods, WA

Mosaic Patterns and Supplies

Coatings By Sandberg Inc, CA
Franciscan Glass Co, CA
D&L Art Glass Supply, CO
AAE Glass LLC, FL
Ed Hoy's International, IL
Rainbow Art Glass Inc, NJ
Sunshine Glassworks Ltd, NY
Franklin Art Glass Studios Inc, OH
Bullseye Glass Resource Center Portland, OR
Canadian Stained Glass Warehouse, QC Canada

Nonacid Etching Equipment and Supplies

D&L Art Glass Supply, CO
AAE Glass LLC, FL
Pre-Cut Patterns Inc, MI
Rainbow Art Glass Inc, NJ
Franklin Art Glass Studios Inc, OH
American Glass Supply Company, TX

Outsource Manufacturing

AAE Glass LLC, FL

Painting Equipment and Supplies

Milkweed Arts, AZ
Hoevel, CA
D&L Art Glass Supply, CO
AAE Glass LLC, FL
Ed Hoy's International, IL
Rainbow Art Glass Inc, NJ
Sunshine Glassworks Ltd, NY
Franklin Art Glass Studios Inc, OH
Canadian Stained Glass Warehouse, QC Canada

Patinas/Patina Remover

Milkweed Arts, AZ
Franciscan Glass Co, CA
Hoevel, CA
D&L Art Glass Supply, CO
AAE Glass LLC, FL
Ed Hoy's International, IL
Rainbow Art Glass Inc, NJ
Jax Chemical Company, NY
Sunshine Glassworks Ltd, NY
Franklin Art Glass Studios Inc, OH
Kuta Glass Accessories Ltd, ON Canada
Canadian Stained Glass Warehouse, QC Canada

Pattern Books

Franciscan Glass Co, CA
Aanraku Glass Studios, CA
D&L Art Glass Supply, CO
Wardell Publications and Products, FL
AAE Glass LLC, FL
Ed Hoy's International, IL
Glass Patterns Quarterly®, Inc, KY
Rainbow Art Glass Inc, NJ
Sunshine Glassworks Ltd, NY
Franklin Art Glass Studios Inc, OH
Canadian Stained Glass Warehouse, QC Canada

Pattern Design

Paned Expressions Studios Inc, MD

Patterns

D&L Art Glass Supply, CO
Wardell Publications and Products, FL
Ed Hoy's International, IL
Rainbow Art Glass Inc, NJ
Franklin Art Glass Studios Inc, OH
Stained Glass Images, WA

Pattern Transfer Paper

D&L Art Glass Supply, CO
AAE Glass LLC, FL
Ed Hoy's International, IL
Rainbow Art Glass Inc, NJ
Franklin Art Glass Studios Inc, OH

Photomask

Milkweed Arts, AZ

Pliers, Breaking/Grozing/Running

Milkweed Arts, AZ
Aanraku Glass Studios, CA
Franciscan Glass Co, CA
D&L Art Glass Supply, CO
Ed Hoy's International, IL
Slumpy's, NC
Rainbow Art Glass Inc, NJ
Sunshine Glassworks Ltd, NY
Franklin Art Glass Studios Inc, OH
Bullseye Glass Resource Center Portland, OR
Fusion Headquarters Inc, OR
Wale Apparatus Co Inc, PA
American Glass Supply Company, TX
Kuta Glass Accessories Ltd, ON Canada
Canadian Stained Glass Warehouse, QC Canada

Polishing Equipment and Supplies

Milkweed Arts, AZ
Gemini Saw Company, Inc, CA
Aanraku Glass Studios, CA
Denver Glass Machinery Inc, CO
D&L Art Glass Supply, CO
Inland Craft, IL
Ed Hoy's International, IL
His Glassworks Inc, NC
Rainbow Art Glass Inc, NJ
Franklin Art Glass Studios Inc, OH
Wale Apparatus Co Inc, PA
American Glass Supply Company, TX
Kuta Glass Accessories Ltd, ON Canada
Canadian Stained Glass Warehouse, QC Canada

Pressed Flowers

Franciscan Glass Co, CA

Projectors

Franciscan Glass Co, CA
D&L Art Glass Supply, CO
Franklin Art Glass Studios Inc, OH
Canadian Stained Glass Warehouse, QC Canada

Putty

Franciscan Glass Co, CA
Aanraku Glass Studios, CA
D&L Art Glass Supply, CO
Ed Hoy's International, IL
Rainbow Art Glass Inc, NJ
Sunshine Glassworks Ltd, NY
Franklin Art Glass Studios Inc, OH
Kuta Glass Accessories Ltd, ON Canada
Canadian Stained Glass Warehouse, QC Canada

Rebar

Franciscan Glass Co, CA
Aanraku Glass Studios, CA
D&L Art Glass Supply, CO
Ed Hoy's International, IL
Rainbow Art Glass Inc, NJ
Sunshine Glassworks Ltd, NY
Franklin Art Glass Studios Inc, OH
Cascade Lead Products, BC Canada
Kuta Glass Accessories Ltd, ON Canada
Canadian Stained Glass Warehouse, QC Canada

Rebar Benders

Aanraku Glass Studios, CA
D&L Art Glass Supply, CO
Ed Hoy's International, IL
Rainbow Art Glass Inc, NJ
Franklin Art Glass Studios Inc, OH

Reinforcing Materials

Aanraku Glass Studios, CA
Franciscan Glass Co, CA

D&L Art Glass Supply, CO
Morton Glass Works Inc, IL
Ed Hoy's International, IL
Rainbow Art Glass Inc, NJ
Sunshine Glassworks Ltd, NY
Franklin Art Glass Studios Inc, OH
Cascade Lead Products, BC Canada
Kuta Glass Accessories Ltd, ON Canada
Canadian Stained Glass Warehouse, QC Canada

Restoration Painting

Hoevel, CA
D&L Art Glass Supply, CO
Rainbow Art Glass Inc, NJ
Franklin Art Glass Studios Inc, OH
Canadian Stained Glass Warehouse, QC Canada

Rondels

D&L Art Glass Supply, CO
Ed Hoy's International, IL
Monarch Glass Studio, MO
Rainbow Art Glass Inc, NJ
Franklin Art Glass Studios Inc, OH
Canadian Stained Glass Warehouse, QC Canada

Routers

Aanraku Glass Studios, CA
Rainbow Art Glass Inc, NJ

Safety Supplies

Face Shields

Aanraku Glass Studios, CA
Franciscan Glass Co, CA
D&L Art Glass Supply, CO
AAE Glass LLC, FL
Morton Glass Works Inc, IL
Ed Hoy's International, IL
Rainbow Art Glass Inc, NJ
Sunshine Glassworks Ltd, NY
Franklin Art Glass Studios Inc, OH
Fusion Headquarters Inc, OR
Wale Apparatus Co Inc, PA
Kuta Glass Accessories Ltd, ON Canada
Canadian Stained Glass Warehouse, QC Canada

Gloves

Franciscan Glass Co, CA
Aanraku Glass Studios, CA
D&L Art Glass Supply, CO
AAE Glass LLC, FL
Ed Hoy's International, IL
Angel Gilding, IL
His Glassworks Inc, NC
Slumpy's, NC
Rainbow Art Glass Inc, NJ
Sunshine Glassworks Ltd, NY
Franklin Art Glass Studios Inc, OH
Fusion Headquarters Inc, OR
Wale Apparatus Co Inc, PA
American Glass Supply Company, TX
Olympic Color Rods, WA
Kuta Glass Accessories Ltd, ON Canada

Goggles

Franciscan Glass Co, CA
Aanraku Glass Studios, CA
D&L Art Glass Supply, CO
AAE Glass LLC, FL
Ed Hoy's International, IL
His Glassworks Inc, NC
Rainbow Art Glass Inc, NJ
Sunshine Glassworks Ltd, NY
Franklin Art Glass Studios Inc, OH
Wale Apparatus Co Inc, PA
American Glass Supply Company, TX
Olympic Color Rods, WA

Masks

Milkweed Arts, AZ
Aanraku Glass Studios, CA
D&L Art Glass Supply, CO
AAE Glass LLC, FL
Johnson Manufacturing Company, IA
Ed Hoy's International, IL
His Glassworks Inc, NC
Slumpy's, NC
American Glass Supply Company, TX
Olympic Color Rods, WA

Respirators

Bullseye Glass Resource Center Los Angeles, CA
Bullseye Glass Resource Center Bay Area, CA
D&L Art Glass Supply, CO
AAE Glass LLC, FL
Ed Hoy's International, IL
Angel Gilding, IL
His Glassworks Inc, NC
Bullseye Glass Resource Center Santa Fe, NM
Bullseye Glass Resource Center New York, NY
Fusion Headquarters Inc, OR
Canadian Stained Glass Warehouse, QC Canada

Safety Glasses

Aanraku Glass Studios, CA
Bullseye Glass Resource Center Bay Area, CA
Franciscan Glass Co, CA
Bullseye Glass Resource Center Los Angeles, CA
D&L Art Glass Supply, CO
AAE Glass LLC, FL
Ed Hoy's International, IL
Slumpy's, NC
His Glassworks Inc, NC
Rainbow Art Glass Inc, NJ
Bullseye Glass Resource Center Santa Fe, NM
Sunshine Glassworks Ltd, NY
Bullseye Glass Resource Center New York, NY
Franklin Art Glass Studios Inc, OH
Fusion Headquarters Inc, OR
Wale Apparatus Co Inc, PA
American Glass Supply Company, TX
Olympic Color Rods, WA
Kuta Glass Accessories Ltd, ON Canada
Canadian Stained Glass Warehouse, QC Canada

Soap

Franciscan Glass Co, CA
Aanraku Glass Studios, CA
D&L Art Glass Supply, CO
AAE Glass LLC, FL
Sasha's International Inc, FL
Ed Hoy's International, IL
Rainbow Art Glass Inc, NJ
Sunshine Glassworks Ltd, NY
Kuta Glass Accessories Ltd, ON Canada

Sandblasting Equipment and Supplies

Milkweed Arts, AZ
Coatings By Sandberg Inc, CA
D&L Art Glass Supply, CO
AAE Glass LLC, FL
Ed Hoy's International, IL
His Glassworks Inc, NC
Rainbow Art Glass Inc, NJ
Franklin Art Glass Studios Inc, OH
Olympic Color Rods, WA

Sandblasting Instruction

Milkweed Arts, AZ
AAE Glass LLC, FL
Glass Patterns Quarterly®, Inc, KY
Franklin Art Glass Studios Inc, OH

Saws

Milkweed Arts, AZ
Franciscan Glass Co, CA

Gemini Saw Company, Inc, CA
 Denver Glass Machinery Inc, CO
 D&L Art Glass Supply, CO
 AAE Glass LLC, FL
 Covington Engineering Corp, ID
 Ed Hoy's International, IL
 His Glassworks Inc, NC
 Rainbow Art Glass Inc, NJ
 Sunshine Glassworks Ltd, NY
 Franklin Art Glass Studios Inc, OH
 Fusion Headquarters Inc, OR
 Wale Apparatus Co Inc, PA
 American Glass Supply Company, TX
 Nortel Manufacturing Ltd, ON Canada
 Kuta Glass Accessories Ltd, ON Canada
 Canadian Stained Glass Warehouse, QC Canada

Screen Printing Supplies

Milkweed Arts, AZ
 AAE Glass LLC, FL
 Ed Hoy's International, IL
 Fusion Headquarters Inc, OR

Sealants

Franciscan Glass Co, CA
 D&L Art Glass Supply, CO
 AAE Glass LLC, FL
 Ed Hoy's International, IL
 His Glassworks Inc, NC
 Rainbow Art Glass Inc, NJ
 Franklin Art Glass Studios Inc, OH

Shears, Foil/Lead

Franciscan Glass Co, CA
 Aanraku Glass Studios, CA
 D&L Art Glass Supply, CO
 AAE Glass LLC, FL
 Ed Hoy's International, IL
 Rainbow Art Glass Inc, NJ
 Sunshine Glassworks Ltd, NY
 Franklin Art Glass Studios Inc, OH
 Bullseye Glass Resource Center Portland, OR
 Kuta Glass Accessories Ltd, ON Canada
 Canadian Stained Glass Warehouse, QC Canada

Sidelights and Transoms

Rainbow Art Glass Inc, NJ
 Franklin Art Glass Studios Inc, OH

Silver Protector

Ed Hoy's International, IL
 Rainbow Art Glass Inc, NJ
 Sunshine Glassworks Ltd, NY
 Franklin Art Glass Studios Inc, OH
 Kuta Glass Accessories Ltd, ON Canada

Silver Stain

Ed Hoy's International, IL
 Rainbow Art Glass Inc, NJ
 Sunshine Glassworks Ltd, NY
 Franklin Art Glass Studios Inc, OH
 Canadian Stained Glass Warehouse, QC Canada

Sinks

D&L Art Glass Supply, CO

Slumping Equipment and Supplies

Franciscan Glass Co, CA
 Coatings By Sandberg Inc, CA
 Gemini Saw Company, Inc, CA
 D&L Art Glass Supply, CO
 Denver Glass Machinery Inc, CO
 Wardell Publications and Products, FL
 AAE Glass LLC, FL
 Ed Hoy's International, IL
 Slumpy's, NC
 SilkeMat®/GlasTile Inc, NC

Rainbow Art Glass Inc, NJ
 Techniglass Corporation, NY
 Sunshine Glassworks Ltd, NY
 Bullseye Glass Resource Center Portland, OR
 Fusion Headquarters Inc, OR
 American Glass Supply Company, TX
 Olympic Color Rods, WA
 Paul Wissmach Glass Company Inc, WV
 Canadian Stained Glass Warehouse, QC Canada

Solder Supplies

Cream/Paste/Remover

Hoevel, CA
 Franciscan Glass Co, CA
 Aanraku Glass Studios, CA
 D&L Art Glass Supply, CO
 Johnson Manufacturing Company, IA
 Ed Hoy's International, IL
 Rainbow Art Glass Inc, NJ
 Sunshine Glassworks Ltd, NY
 Franklin Art Glass Studios Inc, OH
 Kuta Glass Accessories Ltd, ON Canada
 Canadian Stained Glass Warehouse, QC Canada

Solder

Milkweed Arts, AZ
 Aanraku Glass Studios, CA
 Franciscan Glass Co, CA
 D&L Art Glass Supply, CO
 Johnson Manufacturing Company, IA
 Ed Hoy's International, IL
 Rainbow Art Glass Inc, NJ
 Sunshine Glassworks Ltd, NY
 Franklin Art Glass Studios Inc, OH
 Bullseye Glass Resource Center Portland, OR
 Cascade Lead Products, BC Canada
 Kuta Glass Accessories Ltd, ON Canada
 Canadian Stained Glass Warehouse, QC Canada

Solder, Lead Free

Milkweed Arts, AZ
 Franciscan Glass Co, CA
 Aanraku Glass Studios, CA
 D&L Art Glass Supply, CO
 Johnson Manufacturing Company, IA
 Ed Hoy's International, IL
 Rainbow Art Glass Inc, NJ
 Sunshine Glassworks Ltd, NY
 Franklin Art Glass Studios Inc, OH
 Kuta Glass Accessories Ltd, ON Canada
 Canadian Stained Glass Warehouse, QC Canada

Soldering Irons and Accessories

Milkweed Arts, AZ
 American Hakko Products Inc, CA
 Franciscan Glass Co, CA
 Aanraku Glass Studios, CA
 D&L Art Glass Supply, CO
 Johnson Manufacturing Company, IA
 Ed Hoy's International, IL
 Rainbow Art Glass Inc, NJ
 Sunshine Glassworks Ltd, NY
 Franklin Art Glass Studios Inc, OH
 Kuta Glass Accessories Ltd, ON Canada
 Canadian Stained Glass Warehouse, QC Canada

Soldering Sticks

Aanraku Glass Studios, CA
 D&L Art Glass Supply, CO
 Johnson Manufacturing Company, IA
 Ed Hoy's International, IL
 Franklin Art Glass Studios Inc, OH

Tinning Powder

Aanraku Glass Studios, CA
 American Hakko Products Inc, CA
 D&L Art Glass Supply, CO
 Johnson Manufacturing Company, IA
 Ed Hoy's International, IL
 Rainbow Art Glass Inc, NJ

Sunshine Glassworks Ltd, NY
 Franklin Art Glass Studios Inc, OH

Sponges

Aanraku Glass Studios, CA
 Franciscan Glass Co, CA
 D&L Art Glass Supply, CO
 Ed Hoy's International, IL
 Rainbow Art Glass Inc, NJ
 Sunshine Glassworks Ltd, NY
 Franklin Art Glass Studios Inc, OH
 American Glass Supply Company, TX
 Canadian Stained Glass Warehouse, QC Canada

Stains/Stain Remover

Hoevel, CA
 Aanraku Glass Studios, CA
 D&L Art Glass Supply, CO
 AAE Glass LLC, FL
 Ed Hoy's International, IL
 Rainbow Art Glass Inc, NJ
 Sunshine Glassworks Ltd, NY
 Franklin Art Glass Studios Inc, OH
 Canadian Stained Glass Warehouse, QC Canada

Suction Hangers

Franciscan Glass Co, CA
 Aanraku Glass Studios, CA
 D&L Art Glass Supply, CO
 AAE Glass LLC, FL
 Ed Hoy's International, IL
 Rainbow Art Glass Inc, NJ
 Sunshine Glassworks Ltd, NY
 Franklin Art Glass Studios Inc, OH
 Kuta Glass Accessories Ltd, ON Canada
 Canadian Stained Glass Warehouse, QC Canada

Suncatchers Premade

Aanraku Glass Studios, CA
 Ed Hoy's International, IL
 Franklin Art Glass Studios Inc, OH

Temperature Controls

Aanraku Glass Studios, CA
 Franciscan Glass Co, CA
 D&L Art Glass Supply, CO
 Ed Hoy's International, IL
 Rainbow Art Glass Inc, NJ
 Sunshine Glassworks Ltd, NY
 Franklin Art Glass Studios Inc, OH

Vase Caps

Aanraku Glass Studios, CA
 Franciscan Glass Co, CA
 D&L Art Glass Supply, CO
 Ed Hoy's International, IL
 Rainbow Art Glass Inc, NJ
 Sunshine Glassworks Ltd, NY
 Franklin Art Glass Studios Inc, OH
 Kuta Glass Accessories Ltd, ON Canada
 Canadian Stained Glass Warehouse, QC Canada

Ventilation Systems

American Hakko Products Inc, CA
 D&L Art Glass Supply, CO
 Ed Hoy's International, IL
 Rainbow Art Glass Inc, NJ
 Skutt Kilns, OR
 American Glass Supply Company, TX
 Canadian Stained Glass Warehouse, QC Canada

Videos/DVD

Bullseye Glass Resource Center Los Angeles, CA
 Bullseye Glass Resource Center Bay Area, CA
 AAE Glass LLC, FL
 Ed Hoy's International, IL
 Glass Patterns Quarterly®, Inc, KY
 Bullseye Glass Resource Center Santa Fe, NM
 Bullseye Glass Resource Center New York, NY
 Franklin Art Glass Studios Inc, OH
 Bullseye Glass Resource Center Portland, OR

Fusion Headquarters Inc, OR
 American Glass Supply Company, TX
 Olympic Color Rods, WA

Vises

Franciscan Glass Co, CA
 D&L Art Glass Supply, CO
 Ed Hoy's International, IL
 Rainbow Art Glass Inc, NJ
 Sunshine Glassworks Ltd, NY
 Franklin Art Glass Studios Inc, OH
 Kuta Glass Accessories Ltd, ON Canada

Washing and Rinsing Art Glass

Hoevel, CA
 Ed Hoy's International, IL
 Franklin Art Glass Studios Inc, OH

Water Jet Glass Cutting

Milkweed Arts, AZ
 Gemini Saw Company, Inc, CA

Wax

D&L Art Glass Supply, CO
 Ed Hoy's International, IL
 Rainbow Art Glass Inc, NJ
 Sunshine Glassworks Ltd, NY
 Olympic Color Rods, WA
 Kuta Glass Accessories Ltd, ON Canada

Webinars

Glass Patterns Quarterly®, Inc, KY

Whiting

Franciscan Glass Co, CA
 Aanraku Glass Studios, CA
 D&L Art Glass Supply, CO
 Ed Hoy's International, IL
 His Glassworks Inc, NC
 Rainbow Art Glass Inc, NJ
 Sunshine Glassworks Ltd, NY
 Franklin Art Glass Studios Inc, OH
 Kuta Glass Accessories Ltd, ON Canada
 Canadian Stained Glass Warehouse, QC Canada

Wire

Franciscan Glass Co, CA
 D&L Art Glass Supply, CO
 Ed Hoy's International, IL
 Slumpy's, NC
 Rainbow Art Glass Inc, NJ
 Sunshine Glassworks Ltd, NY
 Franklin Art Glass Studios Inc, OH
 American Glass Supply Company, TX
 Kuta Glass Accessories Ltd, ON Canada
 Canadian Stained Glass Warehouse, QC Canada

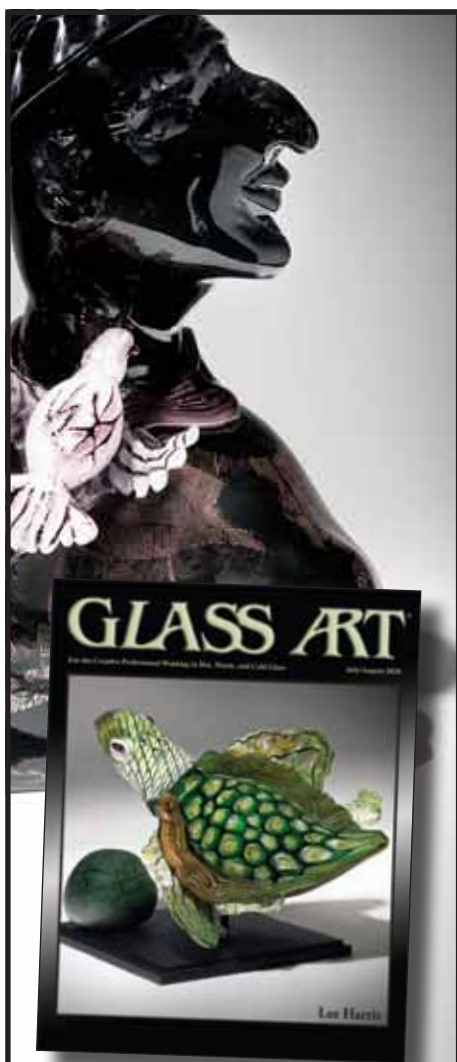
Work Tables

D&L Art Glass Supply, CO
 Canadian Stained Glass Warehouse, QC Canada

Wrought Iron Products

Milkweed Arts, AZ
 D&L Art Glass Supply, CO
 Ed Hoy's International, IL
 Slumpy's, NC
 Rainbow Art Glass Inc, NJ
 Sunshine Glassworks Ltd, NY
 Franklin Art Glass Studios Inc, OH
 Kuta Glass Accessories Ltd, ON Canada

**PRODUCTS
 AND
 SERVICES**



Dear Glass Art®,

"Beautifully laid out, great images chosen, wonderfully written. I'm beyond proud and overwhelmed with both the honor of having this article and being a part of your wonderful magazine! Something for my grand-kids to have."

Lee Harris

Lee Harris, cover artist for the Glass Art® July/August 2020 issue

For the
Creative Professional
Working in Hot, Warm
and Cold Glass

www.GlassArtMagazine.com
502.222.5631



HIS GLASSWORKS
New lower prices on

Electroplated Diamond Disks

hisglassworks.com | 828.254.2559
2000 Riverside Dr Ste 19
Asheville NC 28804 USA

see new
pricing online

Introducing the new
TAP Controller
featuring
touchscreen technology

- TOUCHSCREEN
- WI-FI ENABLED APP
- GRAPHICAL
FIRING VIEW
- PRE-LOADED
FIRING SCHEDULES
- SOFTWARE UPDATES



evenheat
Better by Design.™
www.evenheat-kiln.com



Do you want to
reach new customers?
Advertise in
GLASS ART®
Magazine
Digital and Print

Detail of Aristotle by Robert Carlson
www.robertcarlson.net

Jared DeLong

Using a Crisis to Set a New Course in Glass

by Colleen Bryan

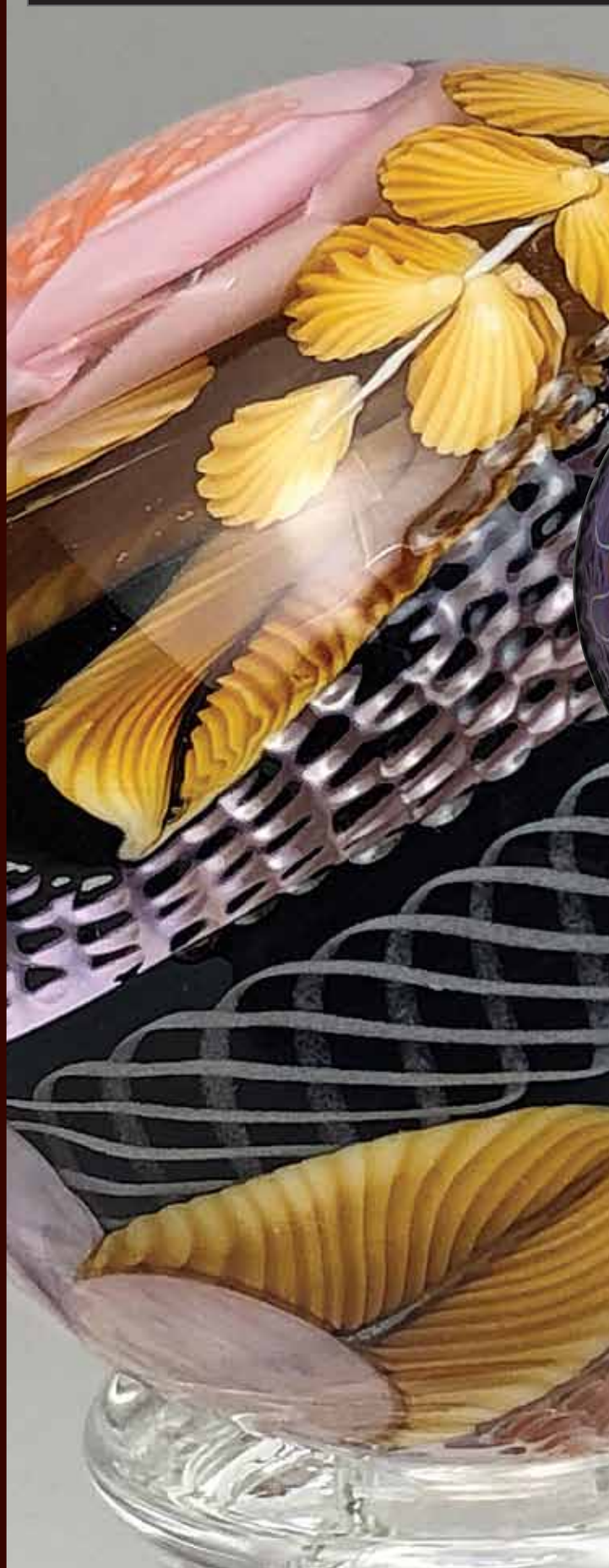
Jared DeLong makes glass in the relative isolation of his Northern California studio. He works a territory between soft and lampworked glass creating marbles, functional pipes, tabletop objects, and small intricate wearables for private sale.

Stylistically, Jared's creations strike an impressionistic chord, often playing with technique, reflected light, and texture. His hallmark is a distinctive and exquisite use of color in tightly executed designs. He strives to infuse beauty and evoke a sense of captivated intrigue and wonder from the beholder.

The artist reflects on how a previous recession influenced his creative career. His observations can provide useful insights to fellow artists facing artistic upheaval in their own lives.

The Value of Isolation

DeLong works from Trinidad, California, a quiet, coastal, scenic town about one and a half hours south of Oregon where the redwoods run down to the ocean. The town of about 500 people is principally a vacation community for beachcombers. Jared wryly observes that there is barely a local economy to support, though generations past tried logging and fishing. More recently, his studio was sustained by small cannabis farmers who stopped by with money to spend on glass art. But with cannabis legalization, small farms have lost ground to large operations, so this tiny remote community exists in continuous transition.



This relative isolation has had an outsized impact on DeLong's trajectory as an artist, in both challenging and positive ways. "I love my town, but choosing to work from here, so far out of sight and easy reach, may have slowed the progression of my career. These days my career depends entirely on the Internet and Instagram."

Even so, solitude and separation contribute importantly to his development as an artist. "These features allow me to develop my own unique style without the influence of other artists whom I love and appreciate. When you work in proximity to others, their influence seeps unbidden into your work. I need to be in a place where I can have a clear head and time to investigate my own ideas—where I can spend less time judging my work through the eyes of others." Especially after a solid apprenticeship that fostered mastery of techniques and materials, Jared says the isolation allows him to clearly hear his own thoughts and desires about how to move his art forward.

Stepping into a Form

DeLong's story as a glass artist is seeded in childhood, helping his hobbyist mom cut and prep her stained glass creations. He was also nurtured by family friends who were themselves glass luminaries like Steve and Ola Lundberg and Daniel Salazar. "Glassworking seemed both normal and fascinating to me. I was struck by the eternal wonderment of how they get that image in there."

Jared's creative questioning continued out of high school through explorations in graphic design and freelance illustration. In his early 20s, DeLong completed an internship at Lundberg Studios that eventually turned into a job. In 1996, he started employment as the cold working assistant in a hot shop and for several years was happy to work alongside well-respected artists with a vast pool of knowledge. Eventually, the urgency to find his own creative voice led Jared to quit that job and start his own soft glass studio in Santa Cruz, California. "Having worked with big furnaces, glory holes, and ovens, I aspired to the same, so I started buying hot glass equipment."

(Left to right) Jared DeLong, Autumn Blossom Marble, 41 mm diameter; Untitled Marble, approximately 50 mm diameter; Autumnn Onie, 4-3/8" long. All in borosilicate created in 2018.





(Left to right) Jared DeLong, Nature's Trip Hammer, borosilicate, 6-1/4" long, 2019; Ganja Medallion, borosilicate and cold worked, 40 mm diameter, 2020.

In 2000, DeLong moved to northern California and rebooted. His business legs were secured by selling small handmade items to art galleries and hobby craft stores. L. H. Selman Gallery in Santa Cruz had known him through his apprenticeship and nurtured the young entrepreneur as he settled into his own studio. "I felt privileged to sell my paperweights in their gallery alongside some great paperweight artists."

Most of DeLong's friends were at least dabbling in functional and wearable glass at the time, and he played with the medium himself. For the Tucson Gem and Mineral Show, he developed a line of Mother Earth beads based on the sedimentary patterns of rock and made those beads for 10 years. Around 2005, he started making borosilicate knives, strongly influenced by what he had learned in the cold working studio. "It was my first boro art beyond wearable art. I sold them in galleries for a few years." Still, these forays into borosilicate were only side projects. His experience and training combined to anchor his focused work in soft glass.

In looking back on that time, Jared remembers a real hunger to find his own avenue of artistic expression. "I concentrated on making things that other people whom I admired also made, but that was always a dead end for me. It didn't feel like my work."

As an apprentice and then an employee of a soft glass studio, DeLong remembers that they had a catalogue and created a body of work that was very much the same from day to day. That sameness is the slippery slope of a glass factory. It is easy to exchange security for tedium and lose enthusiasm for one's own work. The artist found himself trudging through his days with a vague dissatisfaction. He shut down his studio in 2005 and took a break, traveling and attending schools in Italy and Japan while rubbing elbows with internationally recognized glass personalities.

Shortly after returning to California and his own studio in 2008, the economy hit a deep recessionary trough and galleries closed or struggled to stay open. Jared's practice came to an abrupt standstill. Soft glass imposes a heavy financial burden. He remembers the business environment as intense and scary. "I had no foresight into what I would be doing or where my art might be going." In retrospect, DeLong thinks that recessionary downtime may have saved him as a glass artist.

Changing Directions

The artist reopened his studio surrounded by partners who were as excited about glass as he remembered being as a young glass artist and wanted to be again. "Generally they were functional glass artists among whom I was always the soft glass guy." In time, though, Jared himself was drawn both to the annealing advantages and the low cost associated with borosilicate work and started to gravitate toward boro techniques. "I decided that I would no longer do what I no longer enjoyed." That attitude brought an unfamiliar freedom, a release from feeling trapped in the sameness of creating a single product. It opened his art to an evolution and freshness, even as it sparked a corresponding feeling of staring in the face of overwhelming unexplored possibility.

Jared determined that he would focus exclusively on borosilicate. Exploring the new technical challenges was exciting. "I felt that there wasn't enough of this lifetime to grow all of its possibilities. I found in borosilicate an avenue of glassworking that replenished the excitement about glassmaking that I'd had as a young artist."

Play as a Path to Discovery

In the same time frame, Jared married and adopted a child. This created a new imperative to handle his time in the studio efficiently, yet his artistic muse fed on play and experimentation. He found himself fighting personal and financial insecurities even as the globe struggled to economic recovery. "I committed to devoting two weeks of playtime to see if this new exploration was going to work or was a waste of time."

Jared DeLong, Sunset at the Marsh Mini Tube, borosilicate, 7" tall, 2018.



"technical support is exceptional"

"...at the top for quality"

"we couldn't be more pleased"

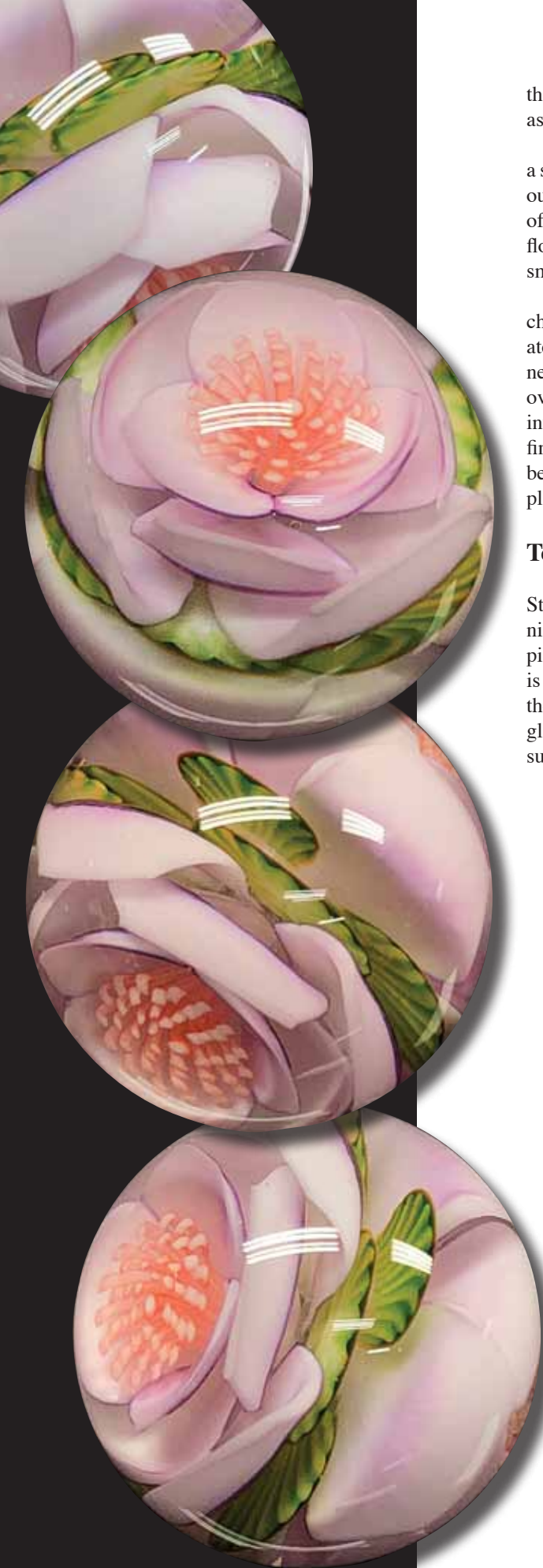
"we love our Euclid kilns"



EUCLID KILNS

800-296-5456

euclidkilns.com



DeLong's initial attempts with borosilicate were flowers, and he frankly observes that his early results were quite bad. But in them he saw the potential of borosilicate as a medium, and the recession afforded him the gift of time to master it.

At the end of two weeks when DeLong looked at what he had produced, he found a springboard to move forward. "I saw huge potential. In a short time, I had figured out some things about the flow and viscosity of glass as well as the temperament of different colors. With boro glass there is a wide variety in how different colors flow and stretch. I honed in on inclusion techniques, where you make and assemble small components, attending to the flow of glass to create an 'Aha!' experience."

His two-week exploration reminded Jared of the link between creativity, a childlike state of play, and exploration. Play connects us to the force that generates creativity. He determined to incorporate playfulness into his daily practice. "I needed to deliberately act to prevent the responsibilities and insecurities of life from overriding my creative impulse. I learned with practice to intentionally shift myself into a mindset of play. I started budgeting small opportunities to create without any financial obligations to slow my investigation. As artists we are often hypercritical, beating ourselves up with critique and self-loathing. This creating with no reason, playing with no end result, has been a lifeline for my evolution as an artist."

Techniques Across Mediums

Through DeLong's previous associations with Orient Flume and Lundberg Studios, he was well versed in the California-style soft glass paperweight technique of the 1970s. On shifting to boro, he became aware of John Kobuki, who pioneered and still works on the forefront of the implosion technique. "Implosion is so well understood that my work is often mistaken for that." With implosion, the torchworker draws a design with colored cane or a tungsten pick onto a clear glass disk or bubble, then heats and turns it over a torch until the imagery blooms, surrounded by clear glass.



(Left to right) Jared DeLong, Blossom Reflection Mini Marble, 25 mm diameter, 2020; Floral Pendant, 40 mm diameter, 2019. Both in borosilicate.



Jared DeLong, Fresh Greens Marble, borosilicate, 42 mm diameter, 2019.

Implosion starts in a standard way, but Jared was more interested in exploring crossover territory, working toward a hybrid that brought what he learned from soft glass into this new world of borosilicate. He immediately found the properties of soft and boro glasses to be as different as the techniques for manipulating them. “By the end of the recession, I’d waded through a lot of creative sludge and done the hard work of learning to make a precious little component that translated well as a flower. My next challenge was what to do with it.”

Drawing on his original training, Jared does extensive prep work to make an assortment of small glass components and create a preconceived scene. Then, departing from both California-style work and implosion, he uses an inclusion technique to build a three-dimensional design by melting the premade components onto a bubble, a marble, or a patty. He paints with cane on the small inclusions to highlight dimension and achieve depth and detail. The composition grows as Jared proceeds with his torchwork, but he generally adheres to the original design.

DeLong finds the potential of boro glass for sculpture and encasement an exciting path for expressing his own artistic voice. Especially in the past five years, he has found opportunities to develop his technique with vessels and hollow forms. With time and practice, his work has gotten tighter and his execution finer. “I’ve been focusing on floral technique for eight years now and have barely scratched the surface of what I suspect there is to be discovered. At the outset, I certainly never imagined I’d still be doing it eight years later.”

If there is a downside to DeLong’s inclusion process, he says, it is that it requires a lot of time to fabricate components and do general prep work. On the other hand, the payoff is that his approach affords him extensive opportunity to experiment and change his designs around a basic composition. “My process has many variables and steps where I can assert artistic choice. They include selecting and manipulating components for the design, mixing colors in unusual combinations, and creating different textures of glass cane. These variables give me the opportunity to endlessly change the work, and that helps me stay fresh and excited by what I’m making.”

Emphasizing the Inherent Qualities of the Material

Glass has some fundamental properties unique from other materials, and Jared seeks to respect and exploit these properties. “My early work focused on glass’ reflectivity, transparency, its chipability and carveability, and the way it melts and moves and flows. My current work explores the use of reflection, surface texture, and sculptural forms inside the glass.”

The unique qualities of glass have captivated DeLong for years, and he attempts to be faithful to that path rather than attempting any *trompe l’œil*, a style of art in which objects are depicted with photographically realistic detail. “Not every glass artist is as concerned with these rules as I am.”

As he started down the rabbit hole of exploration, Jared found the process itself incredibly satisfying. “I truly enjoy both capturing the flow of material under the flame and the tiny beautiful blossoms that I capture inside the glass. I feel that my work is a collection of intricate, beautiful moments.”



CORNING MUSEUM OF GLASS STUDIO

Classes
Residencies
Scholarships
Demonstrations
Rentals
Videos
Community building

For updates on
upcoming classes
visit cmog.org/studio

The Price and Reward of Changing Course

The old proverb counsels, “If you find you’re digging yourself into a hole, stop!” As one who took that advice to heart and managed a U-turn, however, Jared can attest that switching paths is not easy. Following the example of artists whom he had apprenticed himself to and respected, when he was able to set up his own studio, DeLong procured space and equipment for a sizeable soft glass studio. This investment substantially shackled the artist when he decided to change to borosilicate.

“I had borrowed money from family and put my entire life savings into a very large soft glass studio. Selling it at a loss, nearly unused, was breathtaking, but when I committed to working with borosilicate in 2008, I sold it all to a single purchaser, bought a nice torch and some grinding equipment, and went all in.”

These days, Jared works from a very small portion of his very large studio. His setup is modest compared to what he started with but adequate to the reduced demands of borosilicate glassmaking. The studio is a private space, since experience has taught him that he will not be candid with himself in a group environment. “Even when I shared a studio with other artists, I had these huge heavy doors to close everyone off. I don’t want people to see me in my struggle, which is at once personal, painful, and exhilarating. I want to do my suffering in silence.”

Paradoxically, this need to be sequestered runs counter to the artist’s personality. “I would much prefer to be surrounded by people all the time, but privacy is essential when I am trying to sludge through the creative mud. I wait to do the social thing when I am present and open to share, and that is rarely the case during the creative, exploratory process. I’m very self-conscious with other artists.”

The change in course forced DeLong to reimagine his studio, materials, and technical processes, but also his marketing and distribution strategy and the very rhythm of his days. “Prior to the recession and shifting to borosilicate, I had a retail spot where I showed my work. To supply that, I worked very hard, but much of my energy went to business management rather than to art. The recession gave me an opportunity to reevaluate where I wanted to go with my creative process, to experiment with new materials and techniques, to devote more time to hands-on glassmaking and design, and to achieve greater continuity in my creative process.”

This last gift involved discipline. Whatever his mindset, Jared goes to the studio five or six days each week and turns on the torch to do something to keep moving forward. “Discipline was a learned part of my evolution as an artist. If you step away from the torch for very long, you just aren’t the artist you were when you set it down, so the ritual discipline of making is incorporated as part of my daily practice.”

By 2010, people in the larger economy had begun to buy again, and Instagram emerged as a new marketplace. Shifting his market to Instagram collapsed the amount of time that Jared spent marketing through retail outlets as he started participating in chat rooms and gaining exposure for his work with the new social media market.



(Top to Bottom) Jared DeLong, Blossom Reflection Marble, 28 mm diameter, 2020; A Bird in the Hand Sidecar, approximately 7" long, 2019. Both in borosilicate.

GLASS ART®

Visit our New Subscription site to Subscribe, Give a Gift, or Shop Print and Digital Editions.

Use the account number and zip/postal code found on your mailing label or renewal form.

- Update your address any time whenever it is convenient for you!
- View your digital magazines within your account.
- Your digital magazines are always within reach.

Please make sure we have your current e-mail address so we can deliver your latest digital issue.

Background images by Jodie McDougall.

www.GlassArtMagazine.com

GA!

TOYO TOOLS



45 YEARS OF INNOVATION



The Toyo™ Supercutter Series from Glass Accessories International has been the dependable choice of professionals for 45 years.

The latest Toyo cutter is the TC-70 Trac Wheel Supercutter featuring a revolutionary new wheel with micro-notches on the cutting edge. The notches, measured in microns, provide traction to reduce wheel skipping. The result is a clean, complete score and increased wheel life.

The TC-70 is available with a pattern or straight blade and with a contoured acrylic or brass handle.

Visit glassaccessories.com to locate a dealer and see the entire line of Toyo tools.

toyosupercutters.com

Choose the
glass saw that's
right for
YOU!



Ring Saw

Gryphon Zephyr+

Two 7" blades included • Less maintenance



Gryphon Corporation

Our 57th Year!

www.gryphoncorp.com



Wire Saw

Gryphon Omni 2+

Most reliable /least expensive operation

Six blades included



Band Saw

Gryphon C-40

Now available in a new taller version
ideal for cutting bottles

Compare all the features at your dealer or on our website

ISGB International Society of
Glass Beadmakers
We invite you to JOIN us!

CREATORS AND MAKERS

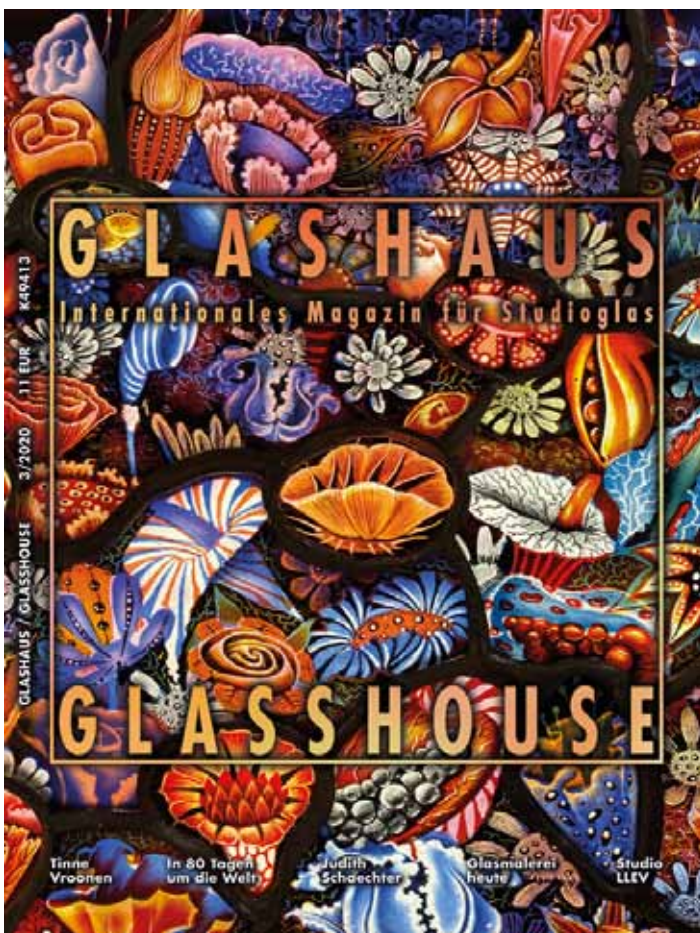
Second Sunday Series
**Kicks off
September
13, 2020**

Once in a Lifetime
Auction
Inspiration in Glass

**October
21-25**

ISGB.org
to learn more





Customers as Co-Creators

These days, DeLong's customer base splits evenly between members of the cannabis community and other glass artists. Jared sees customers and collectors of his work as co-creators. "Purchasers may not recognize that they contribute to the journey of an artist beyond a simple financial transaction."

The artist notes that the functional glass scene has breathed new vitality into glass art in recent years. For his work specifically, the youth and enthusiasm of the boro glass community provide artistic inspiration, even as their love and support are strengthening and sustaining. He appreciates, too, that his techniques resonate with and delight other fine glass artists and is proud that they collect his work.

Jared sees himself as more a fine craftsman than a glass artist. "I used to aspire to be a fine glass artist, but something magical happened when I started to make small glass wearables. Suddenly, I had a connection with the people who bought what I made. When I supplied galleries, my work was driven by my ego and involved continuous striving to make deeply meaningful art that moved people." But the feedback loop was continually short circuited.

"The direct appreciation of my work from my clients was much more satisfying. Having fulfilled those desires allows me to hone in on craft and technique. If you do not enjoy and excite to the process or cannot get direct feedback, it is very hard to move forward. When you make the best work you can with processes you enjoy, the output will be quality."

DeLong still works to push his borosilicate work beyond the beauty of a floral scene—to use what he has learned within a larger format, toward more depth or a louder voice. "This will be a facet of the work at some point. One of my aspirations is to eventually create a body of borosilicate work that can be exhibited in a larger format at a SOFA show or a gallery again." But he does not foresee the day when he will willingly relinquish the direct relationship with his customers that the Internet and Instagram have delivered.

GA

Jared DeLong
(707) 502-9572
jaredelongglass@yahoo.com
Instagram @delongglass

*Jared DeLong,
Untitled Perfume Bottle,
borosilicate,
approximately 7" tall,
2017.*



© Copyright 2020 by Glass Art®. All rights reserved.



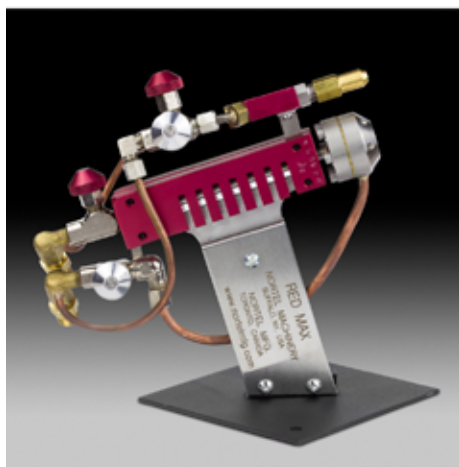
Nortel Manufacturing

Nortel knows how to turn up the heat.

Established in 1967, Nortel Manufacturing Limited has revolutionized the way people work with fire. From flexible hand torches to bench-mounted burners with real power — Nortel knows how to turn up the heat.

And, as working with glass is a natural extension of that burning desire — we carry all the supplies you need to flame-work from kilns to oxygen concentrators to our large selection of glass from all major glass manufacturers.

Shop Online
www.nortelglass.com



Franklin Art Glass Studios Inc.

RETAIL • WHOLESALE • GLASS
TOOLS • SUPPLIES • & MORE!

We Offer Same Day & World Wide Shipping

Shop our Online Store!

- Thousands of products from glass to tools and supplies!
- Simple navigational system
- Compatible with your laptop, desktop, tablet, & smart phone

614.221.2972
COLUMBUS, OH

FRANKLINARTGLASS.COM

FOLLOW US ON
Instagram

Playing in studios everywhere!

STANDING ROOM ONLY!

No bending with an Olympic SRO

Square, Rectangle, Oval Glass Fusing Kilns with tall stands

Get the hottest ticket in town!

Featuring an all-star cast of Olympic Square, Rectangle and Oval models available in multiple sizes with tall stands. Visit greatkilns.com/glass-firing-kilns/glass-firing-square-rectangle-oval-kilns-240-208-volt.html to see all the great models available.

OLYMPIC KILNS
www.greatkilns.com

800.241.4400 • 770.967.4009
sales@greatkilns.com
solutions@greatkilns.com

Featuring the latest from
the International Society of Glass Beadmakers

A Once in a Lifetime Online Auction

by Karyn Sweezy

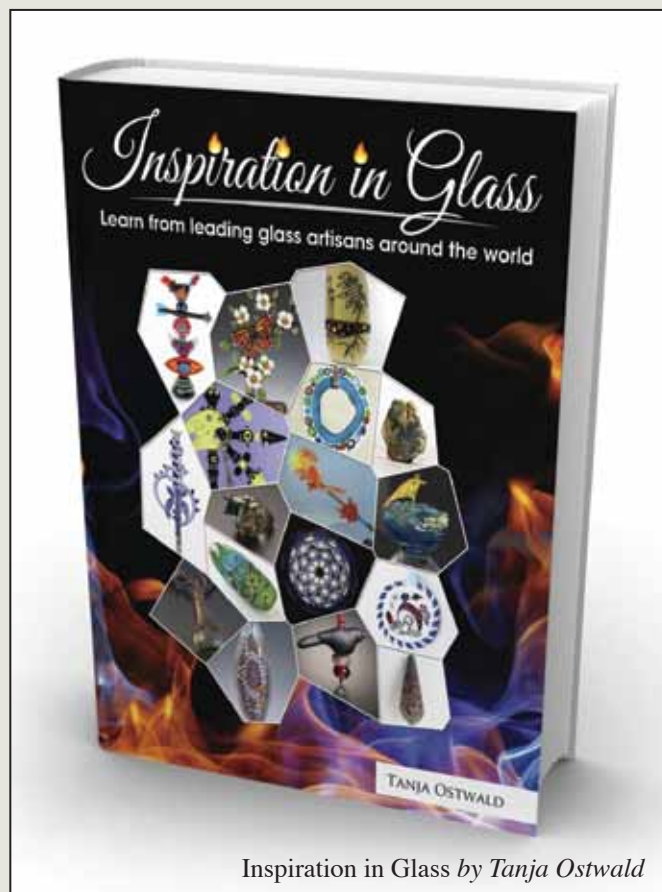
The International Society of Glass Beadmakers (ISGB) will be hosting an online auction October 21–25, 2020, based around the book *Inspiration in Glass* by Tanja Ostwald. The book helps to ignite the passion for working with hot molten glass and pays homage to each of the 18 glass artisans presented in its pages. Its aim is to inspire all the passionate bead makers and creative people around the world to discover their inner artist. The pieces of artwork that are part of the auction have been generously donated by the artists and will be delivered with a copy of the *Inspiration in Glass* book during this once in a lifetime online auction presented by the International Society of Glass Beadmakers and Tanja Ostwald.

The Inspiration in Glass Project

Tanja Ostwald asked the 18 artisans questions about how they created their work and what inspired them. Each artist answered those questions and others, fashioned a piece of glass art, and wrote about the process for inspiration, practice, and failures experienced during the making of the piece. Each artist also contributed “Three Best Tips” and submitted gallery pictures to yield a beautiful and informative book.



Sharon Peters
Photo by Jim Trenkle



Inspiration in Glass by Tanja Ostwald

Ostwald and several of the artists have donated pieces to benefit ISGB. Some of them donated the exact piece made for the book. Some no longer had the original piece when contacted but donated a similar piece. There were also some artists who are included in the book but are no longer making glass beads.

A Vision to Share and Inspire

Inspiration in Glass ignites the passion for working with hot molten glass, helping ISGB with its vision to share and inspire. It also pays homage to many of the 18 glass artisans presented in the book. These pieces will inspire you as well and will be available on the secure online software from this once in a lifetime auction.

ISGB invites you to join its members in supporting the art of glass bead making by visiting the online auction. It's also a great way to pay homage to the artists who participated in this remarkable project. Visit www.isgb.org for more about the ISGB and the upcoming auction.

GA

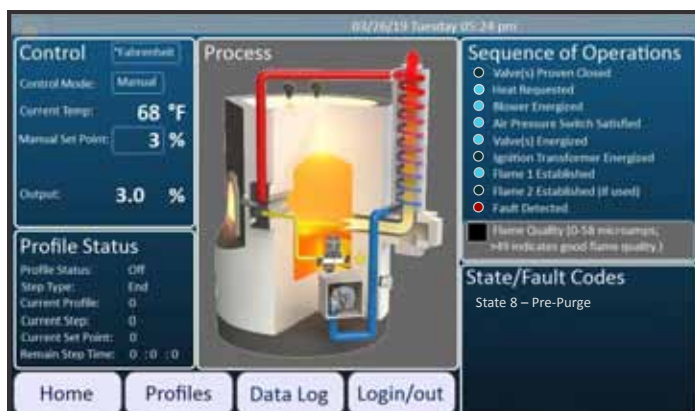
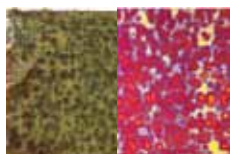
© Copyright 2020 by Glass Art®. All rights reserved.



Y96

True Dichro

*A Scientific
BreakThrough in
Art Glass
Manufacturing*



Control and Remote Access Systems

Wet Dog Glass offers Bluetooth, Wi-Fi and internet accessible touchscreen controls. Connect, review and control from virtually anywhere.

www.wdg-us.com

For details contact
WDG - 910-428-4111 or
tech@wetdogglass.com



STAINED GLASS FUSING MOSAICS JEWELRY SUPPLIES

Teaching Art Glass?

We offer wholesale pricing. Get signed up today.

DelphiGlass.com/Teach

800-248-2048



Artist: Amanda Edwards. From Delphi's Online Artist Gallery.



Artist: Kim Anderson. From Delphi's Online Artist Gallery.



Artist: Lisa Fida. From Delphi's Online Artist Gallery.

IN THIS TOGETHER.
FORGING NEW
CONNECTIONS FOR
OUR COMMUNITY
SINCE 1903.

We connect and galvanize stained
glass artists and addicts across the
country to cultivate and advance the
craft's impact in contemporary art,
architecture, and life.

CELEBRATE OUR HISTORY
BE A PART OF OUR
INNOVATION.



JOIN US!
STAINEDGLASS.ORG

Advertisers' Index

Advertiser	Page
Bullseye Glass www.BullseyeGlass.com	15
Coatings By Sandberg, Inc. (714) 538-0888 www.CBS-Dichroic.com	15
Corning Museum of Glass www.CMOG.org	39
Covington Engineering Corp. (877) 793-6636 www.Covington-Engineering.com	9
Cress Manufacturing (800) 423-4584 www.CressKilns.com	47
Delphi Glass (800) 248-2048 www.DelphiGlass.com	45
Denver Glass Machinery, Inc. (303) 781-0980 www.DenverGlass.com	13
Euclid's Elements (800) 296-5456 www.Euclids.com	37
Evenheat Kiln, Inc. (989) 856-2281 www.Evenheat-Kiln.com	33
Franklin Art Glass (614) 221-2972 www.FranklinArtGlass.com	43
Gemini Saw Company, Inc. (310) 891-0288 www.GeminiSaw.com	7
GLASHAUS www.GlassHouse.de	42
Glass Accessories International www.GlassAccessories.com	41
Glass Art® (502) 222-5631 www.GlassArtMagazine.com	33/41
Gryphon Corporation (818) 890-7770 www.GryphonCorp.com	41
His Glassworks, Inc. (828) 254-2559 www.HisGlassworks.com	33
ISGB (614) 222-2243 www.ISGB.org	42
Mobile Glassblowing (229) 352-9988 www.MobileGlassblowingStudios.com	9
Nortel Manufacturing (416) 438-3325 www.NortelGlass.com	43
Olympic Kilns (800) 241-4400 www.GreatKilns.com	43
Paul Wissmach Glass Co., Inc. (304) 337-2253 www.WissmachGlass.com	48
SGAA (800) 436-9581 www.StainedGlass.org	46
Skutt Kilns (503) 774-6000 www.Skutt.com	2
Wet Dog Glass, LLC (910) 428-4111 www.WDG-US.com	45
Youghiogheny Opalescent Glass Company www.YoughioghenyGlass.com	45

Introducing a new addition to the Cress line of Glass Kilns

Our GL717B is the Ultimate Kiln for the home fuser

Patty Gray

In my 30 years of working in kiln-formed glass I have used many different manufacturers' kilns. I have been fortunate to have Cress Kilns in most of my classes because reliability and consistency is critical to a successful class. Cress kilns has been open to suggestions, I talked to them about building a kiln for both home studio use and classes that runs on a 120v/20amp circuit. They listened to my input about size and design and built the GL717B. This kiln is large enough to fuse and slump 15" bowls, and I can fuse eight of my 6"x 6" molds.



- Generous 17" x 17" x 6.75" Interior
- Easy to open, 2.5" thick fiber lid with a strong lid brace and locking mechanism
- Firebrick brick floor and sides with dual heating elements, for perfect heat distribution
- Comes standard with the user-friendly Bartlett 3 key digital controller
- Cress digital controller has room for 4 programs with 8 segments
- Slanted control panel for easy use and view
- Superior riveted steel casing with solid handles make it easy to move
- Long-lasting solid-state relays
- Requires a 30 amp 120 volt outlet

Model	Volts	AMPS	Temp.	Inside Dimensions	Outside dimensions	Plug type
GL717B	120 VAC	18	1700 °F	17X17X6.75"	31" W x 25" D x 21"H	5-20P



Cress Mfg. Co., Inc. 4736 Convair Dr. Carson City, NV 89706
Phone (775) 884-2777 Fax (775) 884-2991 Website www.cressmfg.com
Email info@cressmfg.com

Wissmach Luminescent Glass



Craig Mitchell Smith uses
Wissmach Luminescent Glass
for his new *Grace* series.

“Only Wissmach Glass can
give me the soft, graceful curves
I love. It drapes beautifully in
the kiln, Wissmach is the
perfect glass for me.”

Craig Mitchell Smith, Grace

Photography by Randy Blankenship



www.WissmachGlass.com