

Featuring the latest from the Contemporary Glass Society

CGS Returns to The World of Glass Museum



(Above) Wendy Newhofer, *Parched*,
kiln formed glass, 17 cm x 13 cm,
2023. Photo by Ian Fraser.

(Left) Layne Rowe,
Picking Daisies,
blown and cut glass,
14 cm x 9 cm x 8 cm, 2023.
Photo by Alick Cotterill.

by Pam Reekie

Not only did The World of Glass in St. Helens open in its newly reimagined Museum galleries on August 12, 2023, but it also welcomed back the Contemporary Glass Society. CGS is delighted to be collaborating once again with The World of Glass in the launch of this new exhibition that is open to all members in the Museum's recently upgraded exhibition space. The exhibition runs through Friday, November 17, 2023.



David Reekie, *The Wall Between Us II*, lost wax cast glass, 30 cm x 40 cm x 25 cm, 2018. Photo by the artist.

Promoting Contemporary Glass Art and Artists

The Contemporary Glass Society (CGS) is the premier supporter and promoter of contemporary glass art and glass artists within the UK. Membership is open to glass artists at all stages of their careers as well as collectors and members of the general public who are interested in contemporary glass.

The World of Glass is a local museum and visitor center in St. Helens, Merseyside, England, that is dedicated to the local history of the town and borough primarily through the lens of the glass industry. The Museum was founded in 2000 and is an amalgamation of the former Pilkington Glass and St. Helens Borough Council Collections. The purpose-built premises was constructed adjacent to Pilkington's glassworks and the stretch of the St. Helens Canal known as the "Hotties."



Katharine Coleman, *Seahorses Bowl*, glass cut and polished with drill and wheel engraving, 23.2 cm x 23.7 cm, 2023. Photo courtesy of The Scottish Gallery.

IN THIS TOGETHER.
FORGING NEW CONNECTIONS
FOR OUR COMMUNITY SINCE
1903.

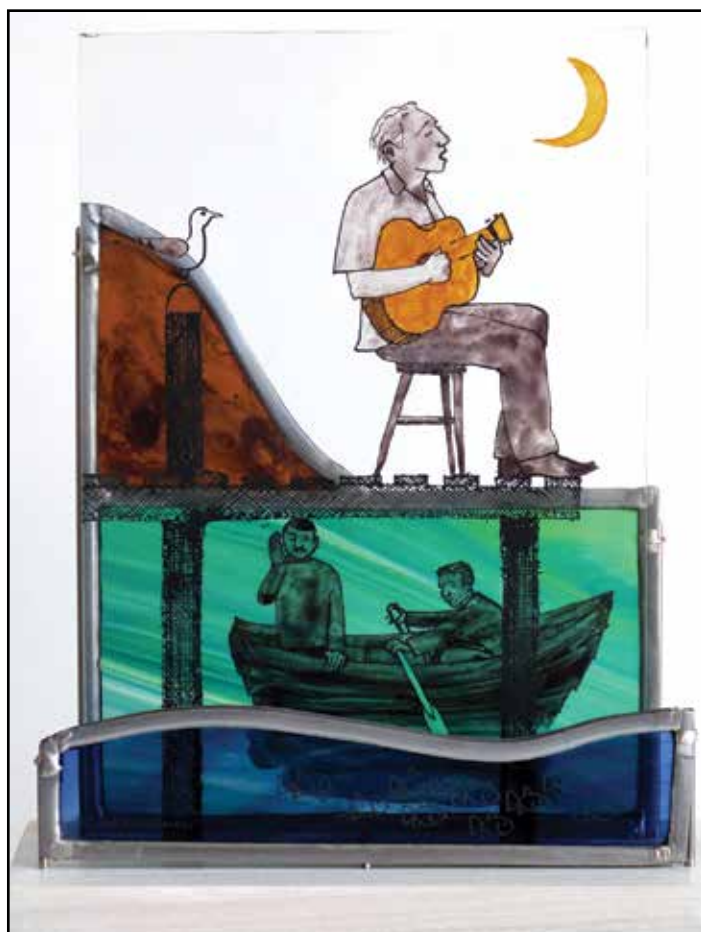
We connect and galvanize
stained glass artists and addicts
across the country to cultivate
and advance the craft's impact in
contemporary art, architecture,
and life.

Over 115 years of helping
makers make great space.

CELEBRATE OUR HISTORY.
BE A PART OF OUR
INNOVATION.



JOIN US!
STAINEDGLASS.ORG



*Frans Wesselman, Singing the Blues, stained glass,
34 cm x 21 cm x 9.5 cm, 2018. Photo by the artist.*

Sharing a Passion for Contemporary Glass Art

With the reopening of the Museum comes the opportunity to see part of one of the finest collections of contemporary glass in private hands in Great Britain. You can feast your eyes, for example, on a small part of the dazzling works collected by Mark Holford, CGS's greatest supporter and avid collector.

The CGS exhibition features work from a range of its members who are at different stages of their careers, but all of whom share the same passion for creating contemporary glass art. It does not have a theme, but rather is a simple celebration of the diversity of contemporary glass in all of its many facets. A highlight of the show is the range of techniques on display from blown to cast work, from kiln formed to engraved work, and much more besides!

There is a definite buzz in St. Helens. With the recent opening of the innovative Glass Futures and the reimagined World of Glass Museum, it is becoming a vibrant center for both industrial and art glass within the UK, and the Contemporary Glass Society is excited to be part of it.

GA

Visit www.cgs.org.uk to learn more about the Contemporary Glass Society and how to become a member. For more information about the St. Helens exhibition, visit www.worldofglass.com.

© Copyright 2023 by Glass Art®.
All rights reserved.