

# Life Forms

## CGS at the Pyramid Gallery, York

by Pam Reekie

A selected exhibition of glass inspired by structure, form, and evolution in the natural world will be presented by 34 members of the Contemporary Glass Society (CGS) May 2–July 12, 2020. The CGS invited its 950 U.K. and international members to submit for entry to the organization's fifth exhibition at Pyramid Gallery in York, UK. From a submission of 84, the selection panel offered the exhibition to 34 glass artists.

Pyramid Gallery, which goes back to 1982, has a long-standing reputation for showing and representing contemporary glass artists in York and has been working with the CGS since 2008. Gallery Owner and Manager Terry Brett was part of the selection panel along with glass artist Effie Burns and CGS Administrator Pam Reekie. "We have selected a variety of styles that represent different techniques, but with a view toward how the whole show will look," says Terry. "It is important to me that we include work by both high profile glass artists and those who are closer to the beginning of their careers. The standard is very high, as is the imagination of the artists in interpreting the theme."

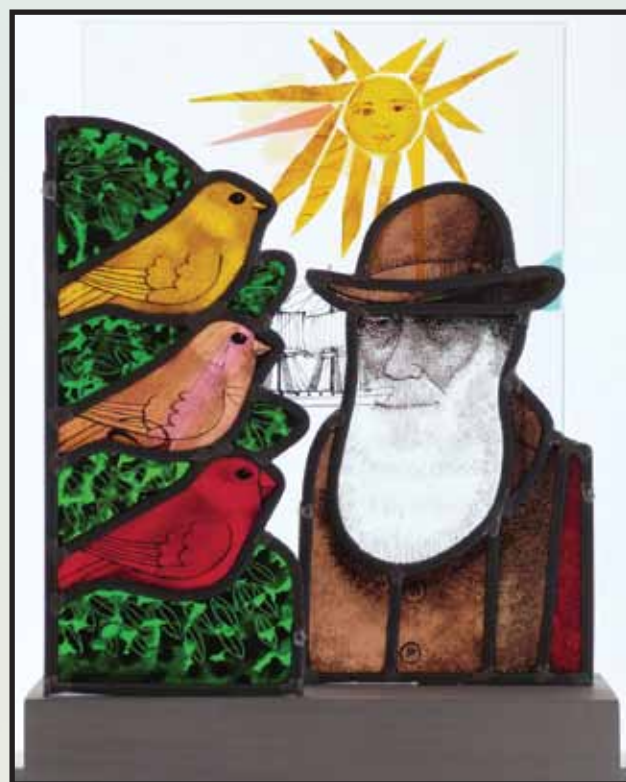
### Celebrating Nature

Due to the many recent protests about climate change and extinction of species, the organizers wanted to celebrate nature and natural forms while marking the 200th anniversary of the May 11, 1820, launching of *The Beagle*, the ship that was to take Charles Darwin on his two-year voyage to the Galapagos Islands. Darwin eventually published his seminal work, *On the Origin of Species*, in 1859.

With the broad ranging title *Life Forms*, this show includes a great variety of interpretations of the theme in forms that include fused wall pieces, cast forms, pâte de verre sculpture and wall pieces, plus blown and cold worked vessels and forms. The exhibition will also include waterjet cut glass, painted and leaded glass, fused glass bowls, engraved bowls, lampwork, and mixed media sculpture.



Carolyn Basing, *Signa Vitae*, 2020.

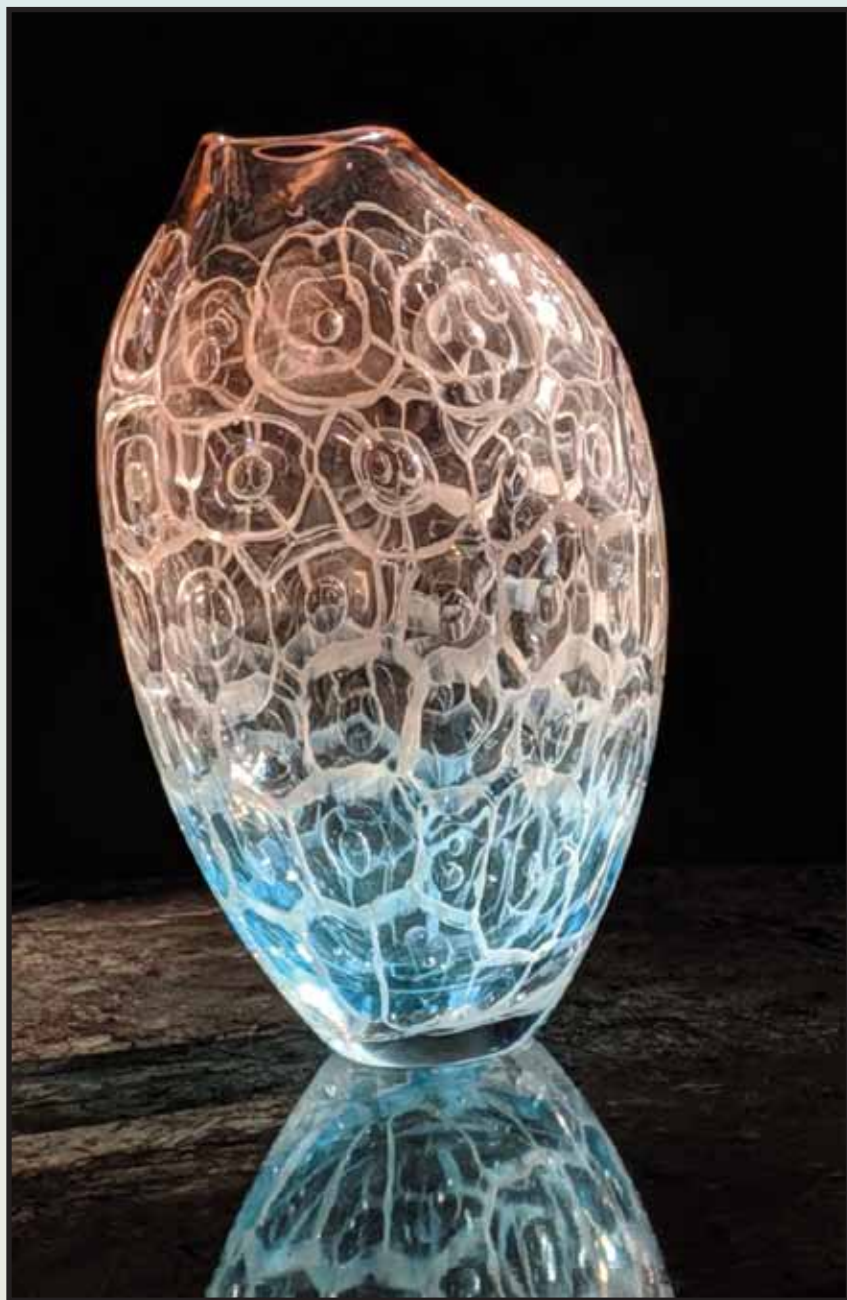


Frans Wesselman, *Finches of the Galapagos*,  
48 cm x 22 cm x 9.5 cm, 2019.

## A Visual Lesson in Natural Science

York is a center of excellence for stained glass, so it is very appropriate that one of the central pieces of this show is *Finches of the Galapagos*, a painted and leaded glass portrait of Charles Darwin by Frans Wesselman. This beautifully made study includes three varieties of finches that gave Darwin the necessary data to help him formulate his evolutionary theory.

In contrast to the Darwin portrait, the plight of coral reefs is alluded to in *Porifera VIII* by Roberta Mason. She will be showing three vessels inspired by the marine animals known as *Porifera*, which are more commonly known as sponges. These creatures are recognized as the least evolved creatures in the animal kingdom, but they are also extremely numerous with about 5,000 different species.



Roberta Mason, *Porifera VIII*, 2019.

The exhibition, which promises to be something of a visual lesson in natural science as well as a treat for collectors of glass, opens on Saturday, May 2 with a public event that will be attended by some of the artists. It is then open every day between 10 a.m. and 5 p.m., and Sundays between 12:30 p.m. and 4:30 p.m. Close to the Minster churches and situated on Stonegate, one of York's busiest streets, the gallery is housed in a 600-year-old building that is owned by the National Trust. The building is distinctive but small, with an overhanging first floor that is typical of medieval buildings in York. Because of its small "sweet shop" window, the building is easy to miss, but in the upstairs gallery, a great deal of glass will be on display in a charming setting. **GA**

*Due to the ongoing COVID-19 restrictions, the 2020 CGS Life Forms member exhibition at the Pyramid Gallery has been postponed until March 2021. There will, however, be an online showing. Visit [www.cgs.org.uk](http://www.cgs.org.uk) for further details and to learn more about becoming a CGS member.*

### Artists Exhibiting in *Life Forms*

Carolyn Basing  
Mim Brigham  
Isobel Brunsdon  
Tabitha Burrill  
Helen Eastham  
Dominic Fonde  
Dot Hill  
Catherine Hough  
Katherine Huskie  
Max Jacquard  
Naomi Jacques  
Susan Kinley  
Yuki Kokai  
Rebecca Laister  
Monette Larsen  
Nicky Lawrence  
Jon Lewis  
Roberta Mason  
Anthony McCabe  
Wendy Newhofer  
Tracy Nicholls  
Yoshiko Okada  
Rebecca Rowland-Chandler  
Helen Slater-Stokes  
Nancy Sutcliffe  
Angela Thwaites  
Noreen Todd  
Elizabeth Welch  
Frans Wesselman  
Sue Woolhouse  
Sandra Young  
Maria Zulueta